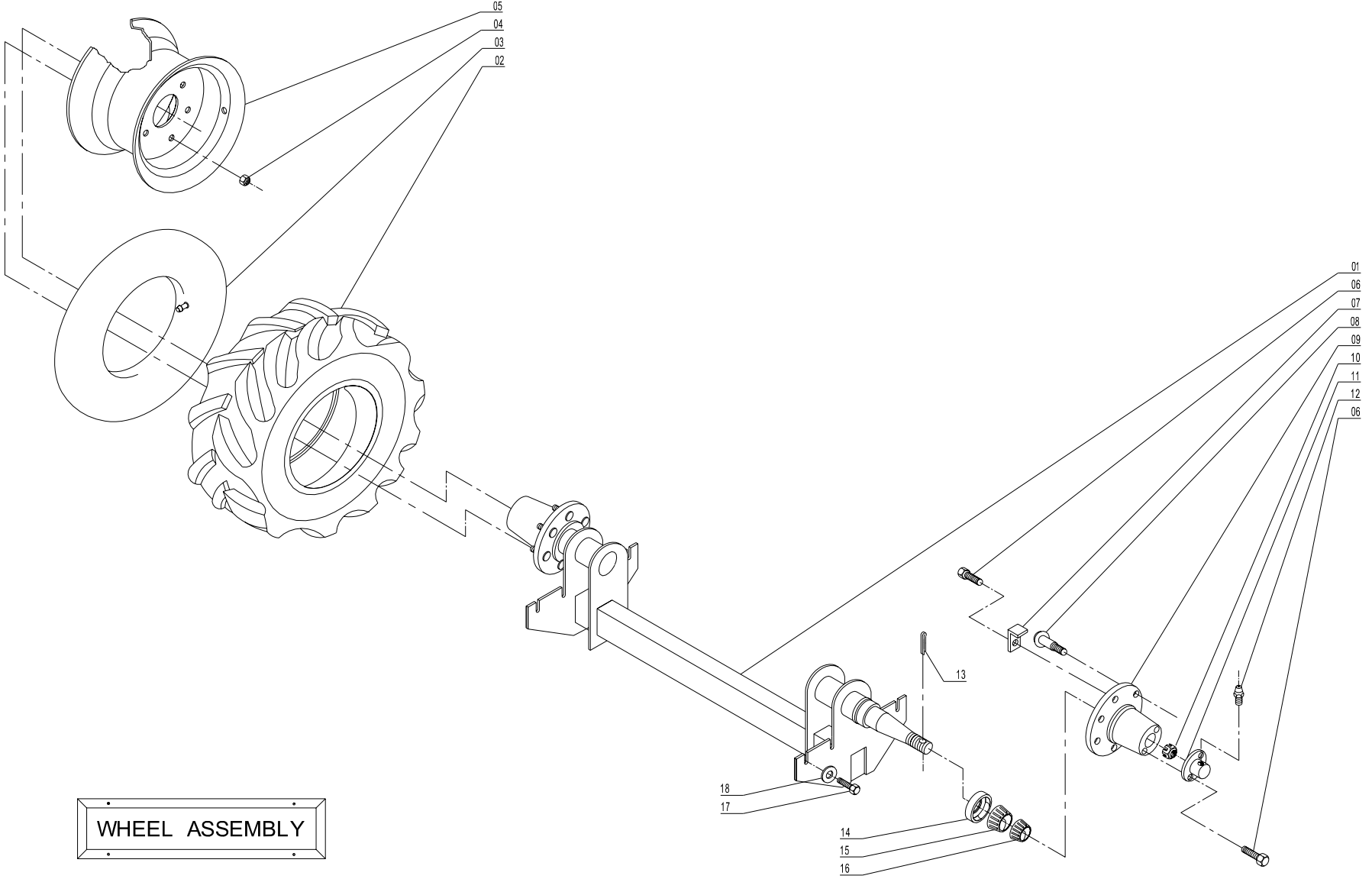


Double Master Plus Combine

Wheel Assembly..... 2-3

Return to this page by clicking the upper right corner of any page in this section.



WHEEL ASSEMBLY

DMP Wheel and Axle Assembly

Parts List

<u>Item</u>	<u>Part No.</u>	<u>Qty</u>	<u>Description</u>
00.	3.102.0108-5	1	Complete Wheel Assembly
01.	510093	1	Offset Combine Axle (2010 – present)
01a.	3.103.0386-7	1	Combine Axle (2002 – 2009)
01b.	3.103.0321-8	1	Combine Axle (2001 – only)
02.	120030	2	Tire 18.4 x 30
03.	3.915.0024-3	2	Inner Tube 18.4 x 30
04.	3.902.0061-4	16	Wheel Lug Nut M20 (2006 – present)
04a.	3.904.0013-3	16	Wheel Conical Washer M20 (2006 – present)
04b.	123029	12	Wheel Lug Nut 3/4" (2001 – 2005)
05.	123031	2	Wheel 16" x 30" x 8 Bolt (2008 – present)
05a.	123027	2	Wheel 16" x 30" x 6 Bolt (2001 – 2007)
06.	3.901.0073-7	8	Hex Bolt, 5/16" x 3/4"
07.	3.104.0214-3	4	Inner Seal Angle Lock
08.	3.901.0196-5	16	Wheel Stud, M20 x 80mm (2006 – present)
08a.	123028	12	Wheel Stud, 3/4" x 2 1/2" (2001 – 2005)
09.	3.006.0348-5	2	Wheel Hub (2008 – present)
09a.	3.006.0191-3	2	Wheel Hub (2002 – 2007)
09b.	3.006.0016-3	2	Wheel Hub (2000 – 2001)
10.	3.902.0004-7	2	Slotted Hex Nut, Wheel Spindle 1 1/2"
11.	070.529-0	2	Dust Cap
12.	3.905.0001-4	2	Grease Zerk 45° x 1/4"
13.	3.906.0011-4	2	Cotter Pin 3/16" x 3"
14.	119195	2	Seal, (2002 – present)
14a.	119206	2	Seal, (2000 – 2001)
15.	102130	2	Roller Bearing, 32016-X (2002 – present)
15a.	102129	2	Roller Bearing, K-3984 K-3920 (2000 – 2001)
16.	102128	2	Roller Bearing, K-25590/25522
17.	3.901.0040-9	8	Hex Bolt, 1/2" x 1 1/4"
18.	3.934.0001-7	8	Flat Washer, 1/2"