

Double Master Plus Combine

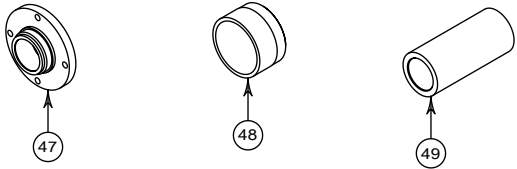
Transmission & Gear Boxes

Section 9

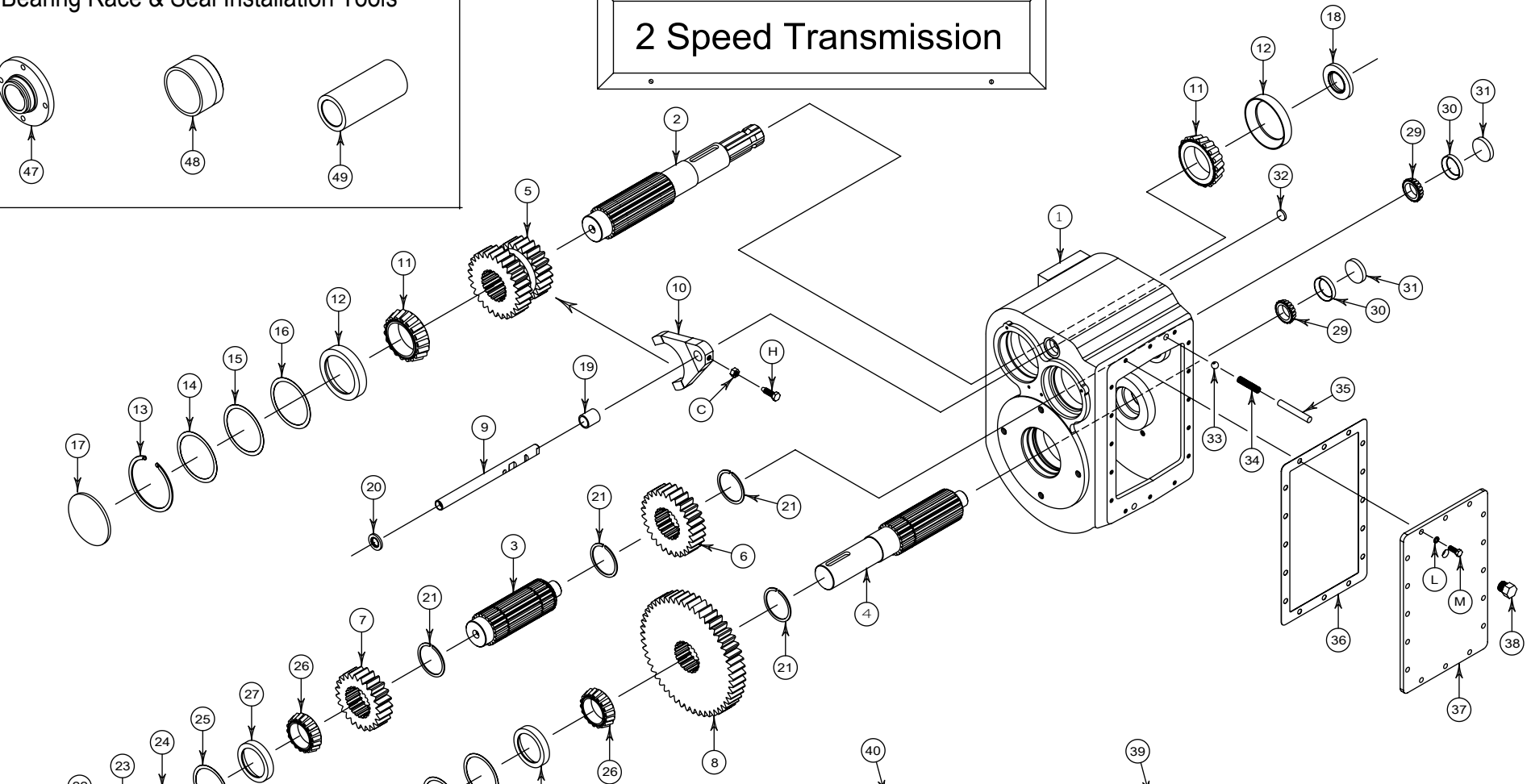
2 Speed Transmission.....	2-4
PTO Gear Box 107021	5-6
Transition Auger Gear Box 107014.....	7-8
Straw Chopper Gear Box 107000	9-10

Return to this page by clicking the upper right corner of any page in this section.

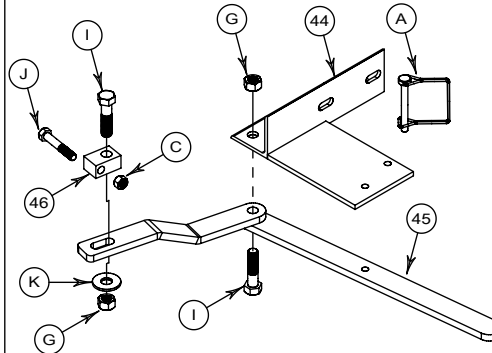
Bearing Race & Seal Installation Tools



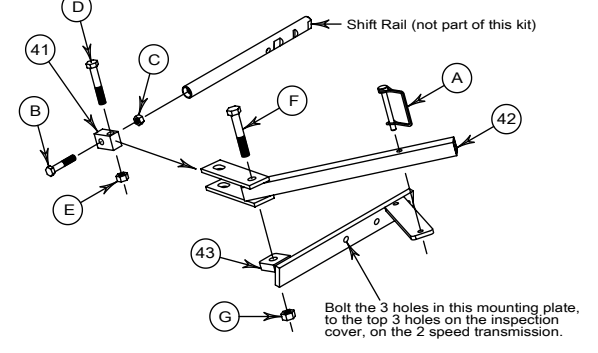
2 Speed Transmission



Shift Lever # 510808 Used on SP2



Shift Lever Kit # 405040 Parts Breakdown



2 Speed Transmission # 510120-540/390

Parts List

<u>Item No.</u>	<u>Part No.</u>	<u>Qty</u>	<u>Description</u>
1.	510121	1	Transmission Housing
2.	510117	1	Input Shaft
3.	510116	1	Counter Shaft
4.	510115	1	Output Shaft
5.	510123	1	Input Cluster Gear (27 & 23 Tooth)
6.	510125	1	Lo-Driven Gear (27 Tooth)
7.	510124	1	Hi-Driven Gear (23 Tooth)
8.	510122	1	Output Gear (50 Tooth)
9.	510126	1	Shift Rail
10.	510127	1	Shift Fork
11.	102150	2	Bearing Cone
12.	102151	2	Bearing Cup
13.	118033	1	Snap Ring (internal)
14.	510146	1	Shim, Bearing (.020") (use as needed to achieve proper shaft end play)
15.	510147	1	Shim, Bearing (.025") (use as needed to achieve proper shaft end play)
16.	510148	1	Spacer, Bearing (.250")
17.	116039	2	Plug, 4 5/8" Expansion Type
18.	119209	1	Seal, Input
19.	510138	1	Shift Rail Spacer
20.	119210	1	Seal, Shift Rail
21.	118034	4	Snap Ring (external)
22.	118035	2	Snap Ring (internal)
23.	510130	1	Shim, Bearing (.010") (use as needed to achieve proper shaft end play)
24.	510131	1	Shim, Bearing (.020") (use as needed to achieve proper shaft end play)
25.	510132	1	Shim, Bearing (.015") (use as needed to achieve proper shaft end play)
26.	102152	2	Bearing Cone
27.	102153	2	Bearing Cup
28.	119211	1	Seal, Output
29.	102148	2	Bearing Cone
30.	102149	2	Bearing Cup
31.	116037	2	2 1/4" Cup Plug
32.	116036	1	7/8" Cup Plug
33.	102163	1	1/2" Detent Ball
34.	510137	1	Detent Spring
35.	510136	1	Shift Rail Spring Spacer
36.	510185	1	Inspection Cover Gasket
37.	510135	1	Inspection Cover
38.	116041	1	Breather Plug
39.	405040	1	Complete Transmission Shifter Assembly (DMP)
40.	510808	1	Complete Transmission Shifter Assembly (DMP SP2)

2 Speed Transmission # 510120-540/390

Parts List

<u>Item No.</u>	<u>Part No.</u>	<u>Qty</u>	<u>Description</u>
41.	510247	1	Shift Lever Swivel Adapter
42.	510245	1	Shift Lever
43.	510250	1	Shift Lever Mount
44.	510812	1	Shift Lever Mount Assembly
45.	510809	1	Shift Lever Assembly
46.	510762	1	Shift Lever Swivel Adaptor
47.	510141	1	Bearing Cone Installation Tool
48.	510142	1	Output Seal Installation Tool
49.	510143	1	Input Seal Installation Tool
Not Shown	116042	1	Plug, Sight Glass
Not Shown	116043	1	Plug, Magnetic Drain
Not Shown	510120-540/390		Complete 2 Speed Transmission w/High gear set (does not include shift lever assembly # 405040 or 510808)

2 Speed Transmission # 510120-500/350

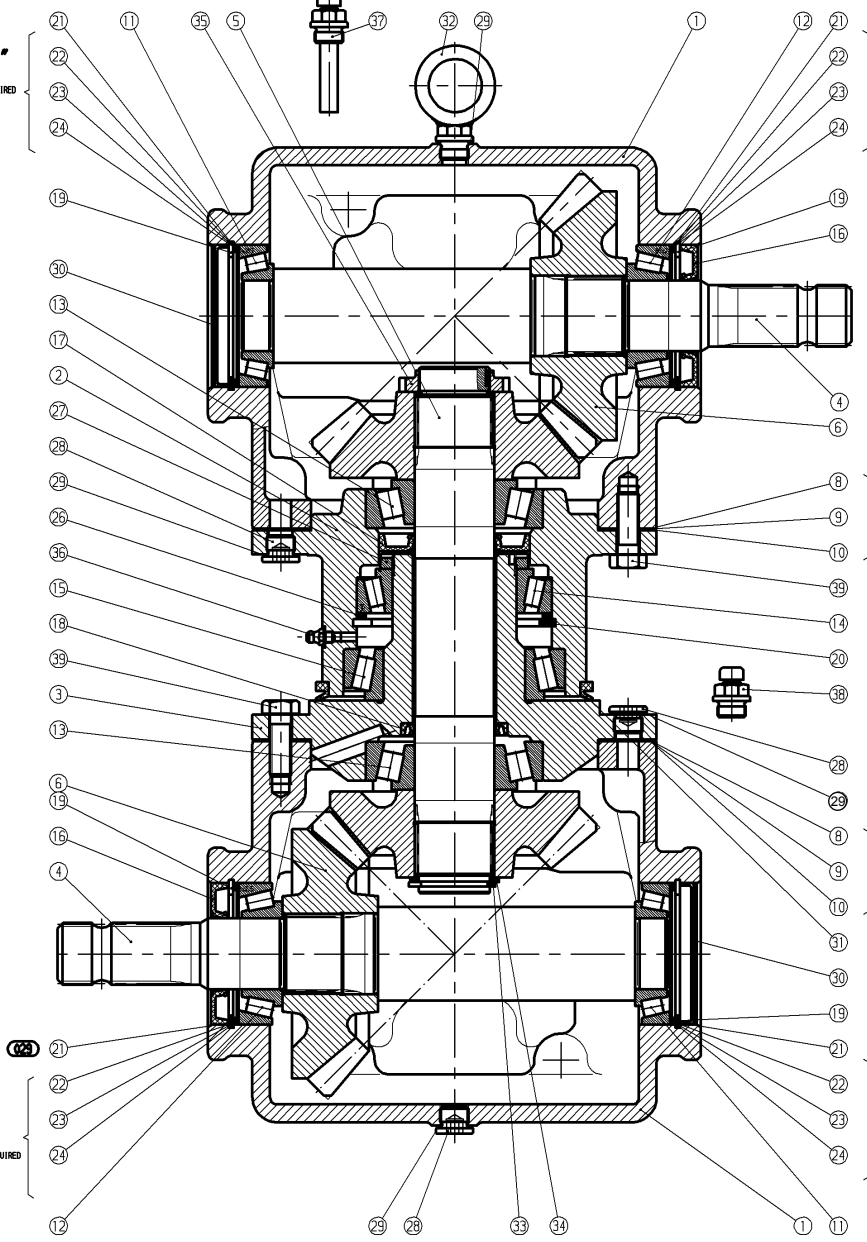
Parts List

<u>Item No.</u>	<u>Part No.</u>	<u>Qty</u>	<u>Description</u>
5.	510923	1	Input Cluster Gear (26 & 22 Tooth)
6.	510925	1	Lo-Driven Gear (28 Tooth)
7.	510924	1	Hi-Driven Gear (23 Tooth)
8.	510922	1	Output Gear (52 Tooth)
Parts Not Listed Above are The Same as Transmission 510120-540/390			
Not Shown	510120-500/350		Complete 2 Speed Transmission w/Low gear set (does not include shift lever assembly # 405040 or 510808)

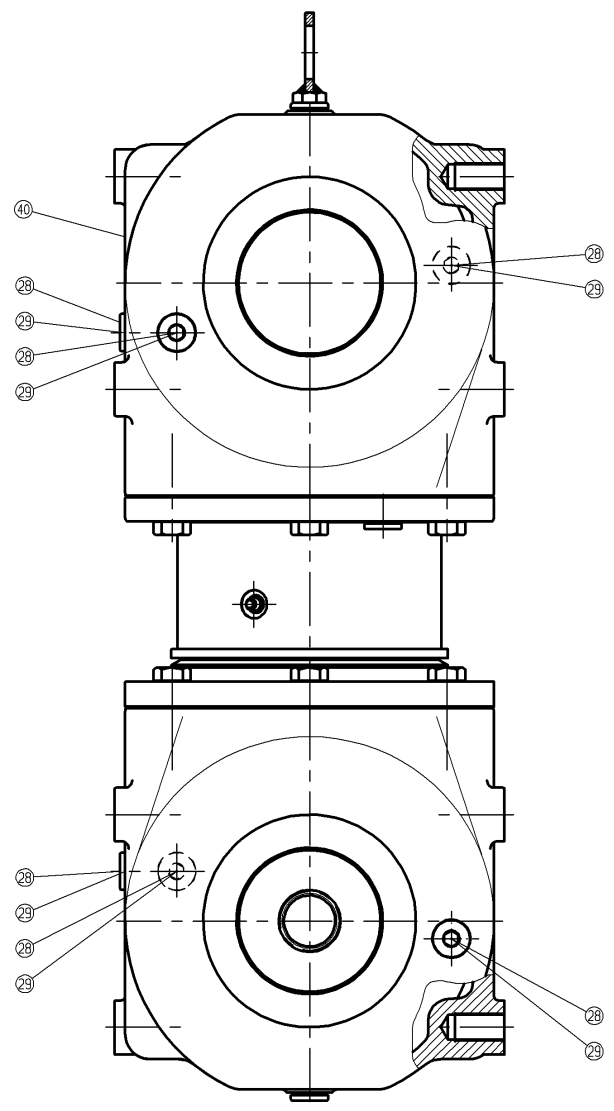
Hardware List

<u>Item No.</u>	<u>Part No.</u>	<u>Qty</u>	<u>Description</u>
A.	106064	1	5/16" Bridge Pin
B.		1	3/8" x 2" NC Hex Bolt
C.		2	3/8" NC Hex Nut
D.		1	7/16" x 3" NC Hex Bolt
E.		1	7/16" NC Nyloc Hex Nut
F.		1	1/2" x 3" NC Hex Bolt
G.		2	1/2" Center Lock Hex Nut
H.	510128	1	Detent Bolt
I.		2	1/2" x 2" NC Hex Bolt
J.		1	3/8" x 2 1/4" NC Hex Bolt
K.		1	1/2" Flat Washer
L.		16	3/8" Lock Washer
M.		16	3/8" x 1" NC Hex Bolt

"B"
SHIMS AS REQUIRED



"A"
SHIMS AS REQUIRED



"C"
SHIMS AS REQUIRED

"C"
SHIMS AS REQUIRED

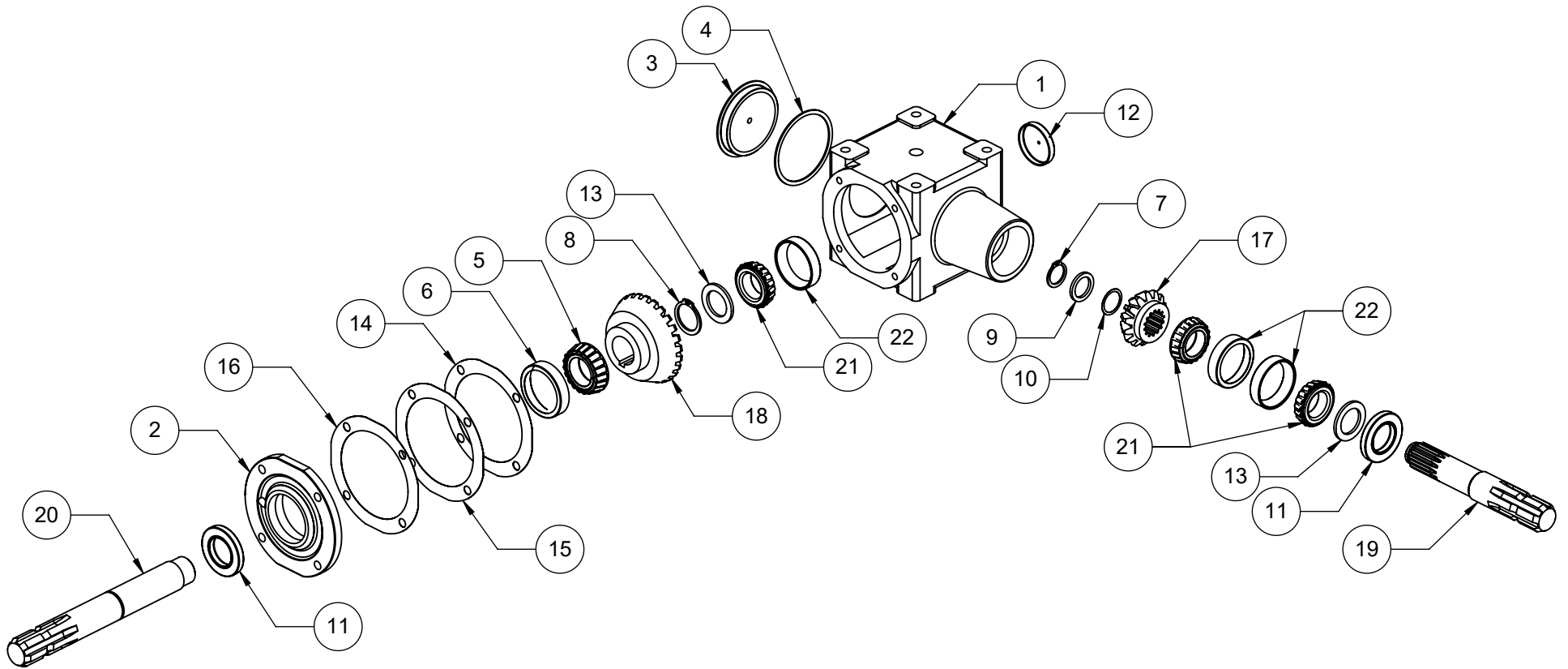
"B"
SHIMS AS REQUIRED

PTO Swivel Gear Box
107021

PTO Swivel Gear Box # 107021

Parts List

<u>Item No.</u>	<u>Part No.</u>	<u>Qty</u>	<u>Description</u>
1.	107031	2	Housing, GT-55
2.	107032	1	Swivel Half, GT-55 SA Outer
3.	107033	1	Swivel Half,GT-55 SA Inner
4.	119328	2	Shaft, Cross
5.	119329	1	Shaft, Immediate
6.	107030	2	Bevel Gear Set
7.			
8.	119322	3	Shim, 0.19mm Thick
9.	119323	3	Shim, 0.25mm Thick
10.	119324	6	Shim, 0.35mm Thick
11.	102230	2	Bearing, Taper Roller
12.	102231	2	Bearing, Taper Roller
13.	102233	2	Bearing, Taper Roller
14.	102229	1	Bearing, Taper Roller
15.	102232	1	Bearing, Taper Roller
16.	119279	2	Seal, 40x80x10
17.	119277	1	Seal, 45x85x10
18.	119278	1	Seal, 45x60x7
19.	118041	4	Snap Ring, 80x2.5 External
20.	118042	1	Snap Ring, 110x4.0 External
21.	119330	4	Shim, 72x80x2.0
22.	119325	4	Shim, 72x80x0.5
23.	119326	4	Shim, 72x80x0.3
24.	119327	6	Shim, 72x80x0.1
25.			
26.	106080	1	Washer, 100x110x3.5
27.	118043	1	Spanner Nut, M70x2 Slotted
28.	106076	9	Plug, M16x1.5
29.	107027	10	Gasket, 16x20 Copper
30.	103183	2	Cap, 80x8 Radial
31.	119312	1	Seal, V-Ring
32.		1	Eye Bolt, M16x1.5
33.	118044	1	Snap Ring, 40x2.5 Internal
34.	106082	1	Washer, 40x50x2.5
35.	118045	1	Spanner Nut, M40x1.5
36.	126006	1	Grease Fitting, M6
37.	106077	1	Breather, M16x1.5
38.	106078	1	Breather, M16x1.5
39.	106081	12	Bolt, Hex Head M12x35
40.		1	Serial Number Plate



PRAIRIE 2 TO 1
GEAR BOX (LH Rotation)

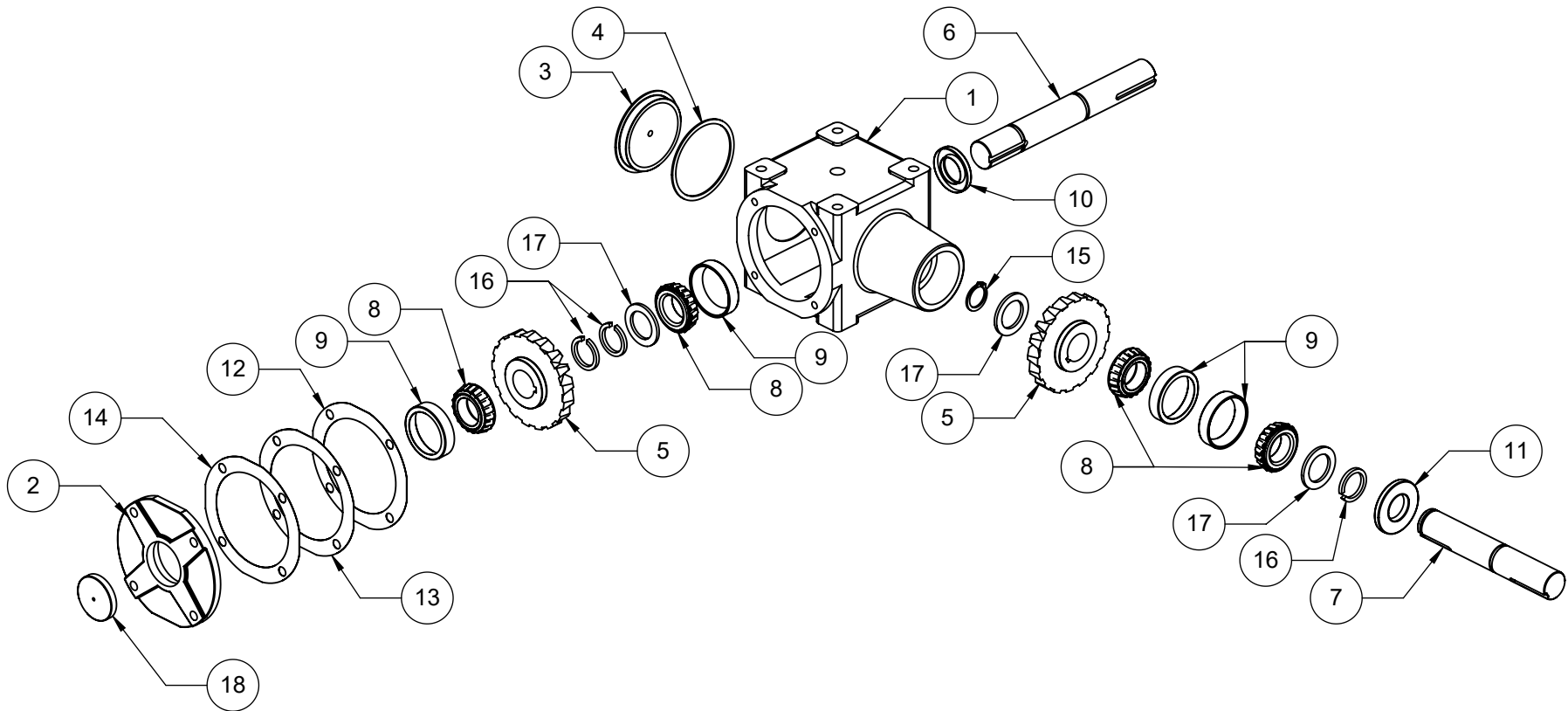
Part No.

107014

PRAIRIE 2 to 1 GEAR BOX—#107014**Parts List**

<u>Item No.</u>	<u>Part No.</u>	<u>Qty</u>	<u>Description</u>
1.	108144	1	Housing, Side Port
2.	103090	1	Cover, Side Port
3.	116025	1	Cover, Stamping
4.	107037	1	Gasket, Stamping Cover
5.	102083	1	Bearing, Cone—LM48548
6.	102084	1	Bearing Race—LM48510
7.	106033	1	Snap Ring, 1"
8.	106032	1	Snap Ring, 1 ³ / ₈ "
9.	123036	1	Washer 1"
10.	119130	As Required	Shim—.007" × 1.00"
11.	119113	2	Seal—473215
12.	116026	1	Expansion Plug, 2"
13.	123035	2	Washer, 1 ¹ / ₄ "
14.	119127	As Required	Shim, Side Port Cover .005"
15.	119128	As Required	Shim, Side Port Cover .0075"
16.	119129	As Required	Shim, Side Port Cover .010"
17.	107018	1	Pinion Gear, 14 Tooth (6-P)
18.	107019	1	Gear, 26 Tooth (6-P)
19.	119133	1	Pinion Shaft
20.	119132	1	Cross Shaft
21.	102085	3	Bearing, Cone—LM 67048
22.	102086	3	Bearing Race—LM 67010

Note: All PTO gear box assemblies are shipped without oil.



PRAIRIE 1 TO 1
GEAR BOX (RH Rotation)

Part No.

107000

PRAIRIE 1 to 1 GEAR BOX - PART # 107000 RH Rotation

Parts List

<u>Item No.</u>	<u>Part No.</u>	<u>Qty.</u>	<u>Description</u>
1.	108144	1	Case
2.	103190	1	Cover, Cover Side Port
3.	116025	1	Cover, Stamping
4.	107037	1	Gasket, Stamping Cover
5.	107016	2	Gear 17T
6.	119320	1	Cross Shaft
7.	119296	1	Quill Shaft
8.	102085	4	Bearing Cone—LM67048
9.	102086	4	Bearing Cup—LM67010
10.	119275	1	Seal—471766
11.	119274	1	Seal—471808
12.	119127	As Required	Shim .005
13.	119128	As Required	Shim .0075
14.	119129	As Required	Shim .010
15.	106031	1	Snap Ring 1 1/4"
16.	118040	3	Snap Ring 1 1/4"
17.	123035	3	Washer 1 1/4"
18.	116026	1	Expansion Plug 2"

Note: All PTO gear box assemblies are shipped without oil.