

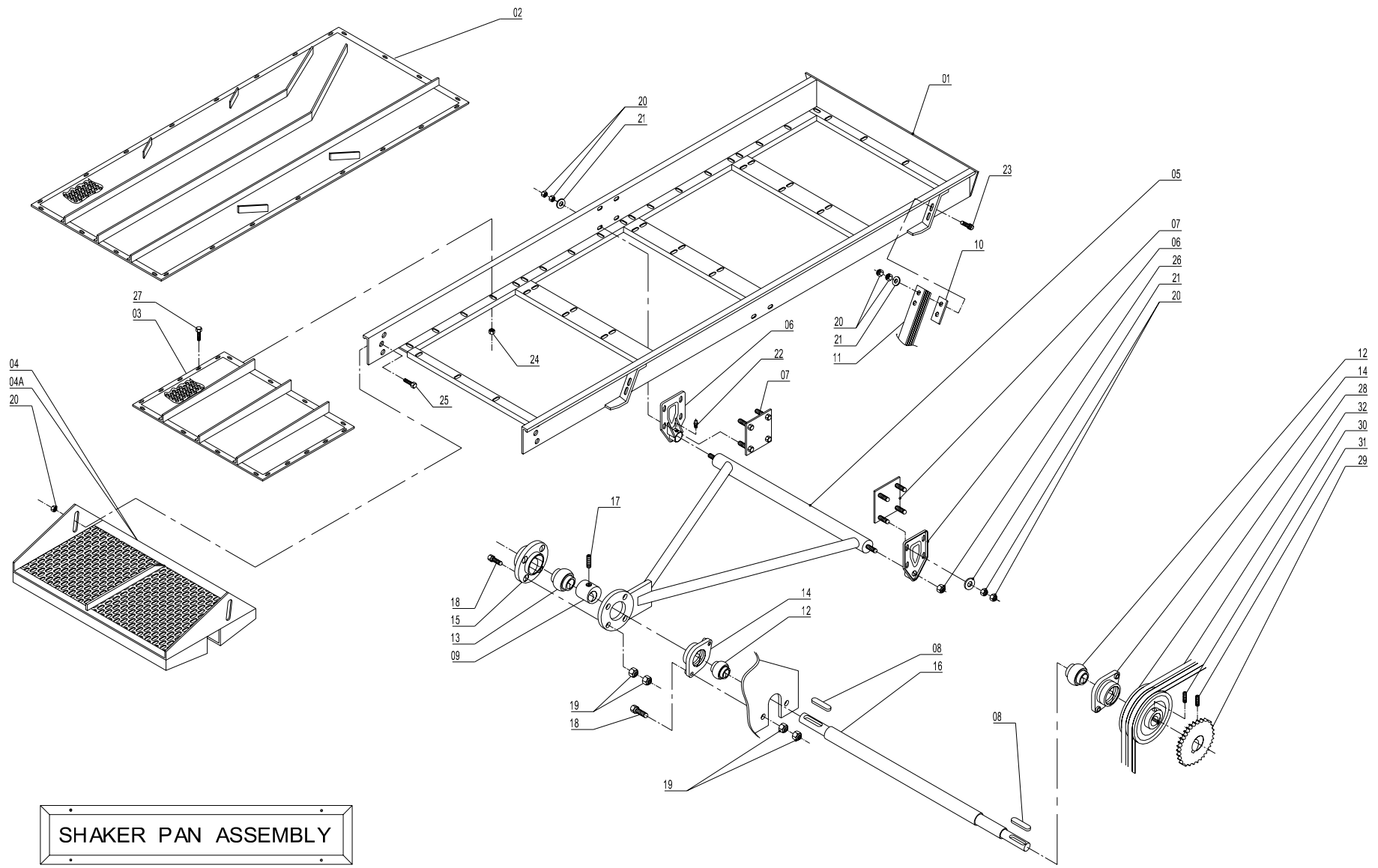
Double Master Plus Combine

Shaker Pan

Section 7

Shaker Pan (2001 – 2008)	2-3
Shaker Pan (2009 – Present).....	4-5

Return to this page by clicking the upper right corner of any page in this section.

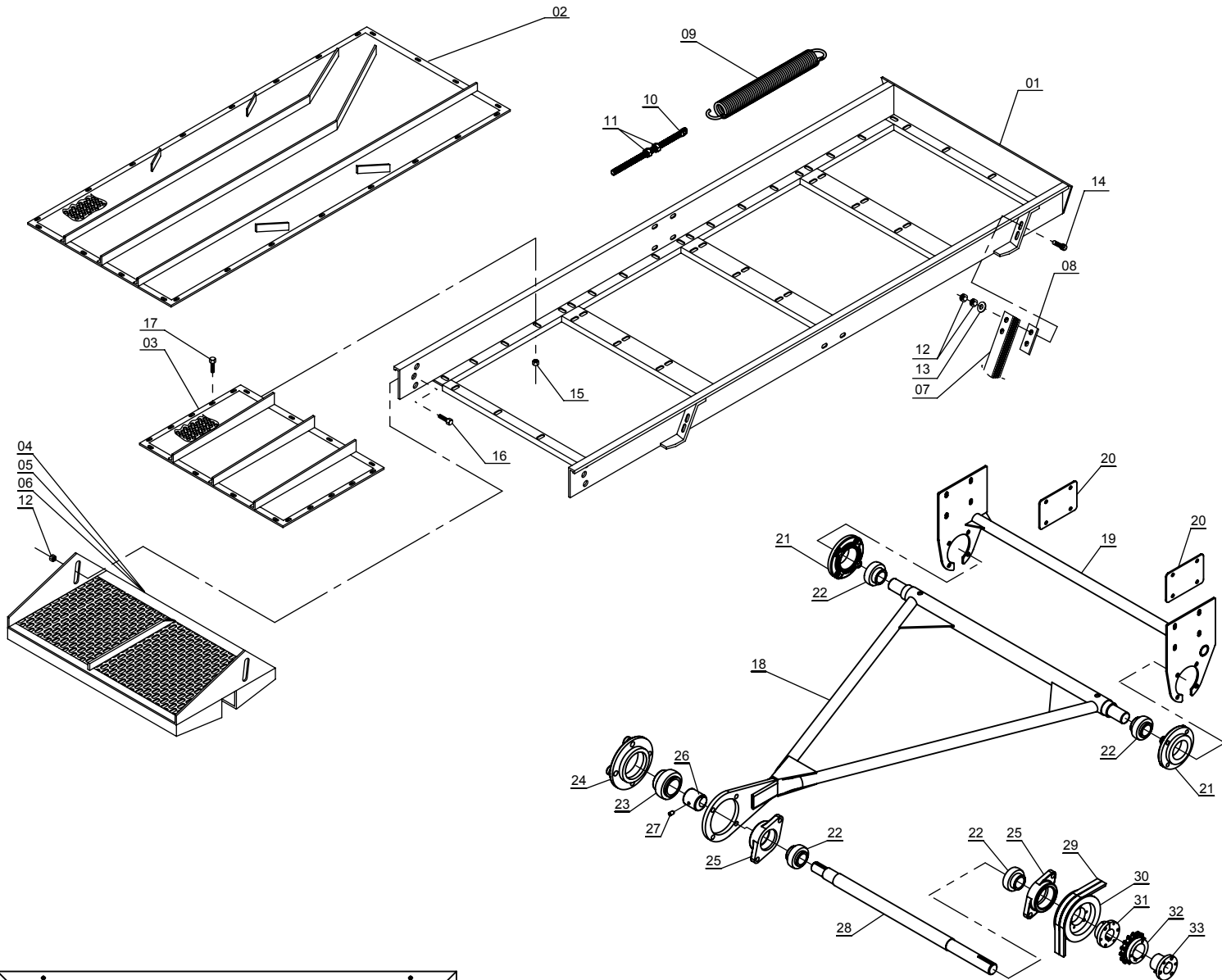


SHAKER PAN ASSEMBLY

DMP Shaker Pan – 2001 - 2008

Parts List

<u>Item</u>	<u>Part No.</u>	<u>Qty</u>	<u>Description</u>
00.	3.102.0111-7	1	Complete Shaker Pan
01.	020.608-7	1	Shaker Pan Frame
02.	062.447-2	1	Front Shaker Pan Sieve 5mm
02a.	510155	1	Front Shaker Pan Sieve 7/64" x 3/4" Slot
03.	3.103.0338-9	1	Rear Shaker Pan Sieve 5mm
03a.	510154	1	Rear Shaker Pan Sieve 7/64" x 3/4"
04.	038.842-2	1	Final Stage Shaker Pan Sieve, 1/2" x 1" Oblong Hole
04a.	013.581-4	1	Final Stage Shaker Pan Sieve, 14mm Round Hole
04b.	3.103.0229-5	1	Final Stage Shaker Pan Sieve, 3/8" x 1" Oblong Hole
05.	3.103.0197-1	1	A-frame Shaker Pan Sieve
06.	044.978-5	2	Shaker Arm Mount
07.	3.103.0217-3	2	Shaker Pan Mount Support
08.	3.004.0006-9	2	Keystock, 5/16" x 2"
09.	3.007.0003-6	1	Shaker Pan Eccentric
10.	3.104.2671-1	8	Stiffener Plate
11.	031.030.2	24	Shaker Pan Leaf Spring
12.	102100	2	Bearing, Insert 35mm
13.	102099	1	Bearing, Insert 50mm
14.	052.344-9	2	Flange, 2 Hole 35mm
15.	106055	1	Flange, 4 Hole 50mm
16.	3.107.0140-6	1	Shaker Pan Shaft
17.	3.901.0013-3	1	Set Screw, 3/8" x 5/8"
18.	3.901.0043-3	8	Hex Bolt, 1/2" x 2"
19.	3.902.0011-1	16	Hex Nut, 1/2"
20.	3.902.0014-4	50	Hex Nut, 3/8"
21.	3.934.0003-3	24	Flat Washer, 3/8"
22.	3.905.0004-7	2	Grease Zerk, Straight 1/4"
23.	3.901.0059-6	16	Hex Bolt, 3/8" x 1 1/4"
24.	3.902.0008-8	20	Lock Nut, M8
25.	3.901.0066-9	4	Hex Bolt, 3/8" x 3/4"
26.	3.902.0019-3	2	Lock Nut, 5/8"
27.	3.901.0110-5	20	Hex Bolt, M8 x 20mm
28.	119233	1	Sheave, 2B5.4SDS
28a.	102147	1	Bushing, SDS x 35mm
29.	119306	1	Sprocket, 60P18 (2001 – 2008)
29a.	102183	1	Bushing, P x 35mm
30.	3.901.0005-2	1	Set Screw, 1/2" x 1"
31.	3.901.0012-5	1	Set Screw, 3/8" x 3/4"
32.	102114	2	V-belt, B65
Not Shown	405059		Kit to Convert 2000 – 2008 A-frame Assembly to 2009 – Present



SHAKER PAN ASSEMBLY

DMP Shaker Pan – 2009 - Present

Parts List			
<u>Item</u>	<u>Part No.</u>	<u>Qty</u>	<u>Description</u>
01.	020.608-7	1	Shaker Pan Frame
02.	062.447-2	1	Front Shaker Pan Sieve 5mm
02a.	510155	1	Front Shaker Pan Sieve 7/64" x 3/4" Slot
03.	3.103.0338-9	1	Rear Shaker Pan Sieve 5mm
03a.	510154	1	Rear Shaker Pan Sieve 7/64" x 3/4"
04.	038.842-2	1	Final Stage Shaker Pan Sieve, 1/2" x 1" Oblong Hole
05.	013.581-4	1	Final Stage Shaker Pan Sieve, 14mm Round Hole
06.	3.103.0229-5	1	Final Stage Shaker Pan Sieve, 3/8" x 1" Oblong Hole
07.	031.030.2	24	Shaker Pan Leaf Spring
08.	3.104.2671-1	8	Stiffener Plate
09.	044.873-1	2	Pickup Head Floatation Spring
10.	065.112-3	2	Eyebolt, 5/8" x 12"
11.	3.902.0016-9	4	Hex Nut, 5/8" NC
12.	3.902.0014-4	50	Hex Nut, 3/8"
13.	3.934.0003-3	24	Flat Washer, 3/8"
14.	3.901.0059-6	16	Hex Bolt, 3/8" x 1 1/4"
15.	3.902.0008-8	20	Lock Nut, M8
16.	3.901.0066-9	4	Hex Bolt, 3/8" x 3/4
17.	3.901.0110-5	20	Hex Bolt, M8 x 20mm
18.	511138	1	A-frame Shaker Pan Sieve
19.	511146	1	Shaker Arm Mount
20.	511145	2	Shaker Pan Mount Support
21.	106054	2	Flange, 4 Hole 35mm
22.	102100	4	Bearing, Insert 35mm
23.	102099	1	Bearing, Insert 50mm
24.	106055	1	Flange, 4 Hole 50mm
25.	052.344-9	2	Flange, 2 Hole 35mm
26.	3.007.0003-6	1	Shaker Pan Eccentric
27.	3.901.0013-3	1	Set Screw, 3/8" x 5/8"
28.	3.107.0140-6	1	Shaker Pan Shaft
29.	102114	2	V-Belt, B65
30.	119233	1	Sheave, 2B5.4SDS
31.	102147	1	Bushing, SDS x 35mm
32.	119263	1	Sprocket, 60P15
33.	102183	1	Bushing, P x 35mm