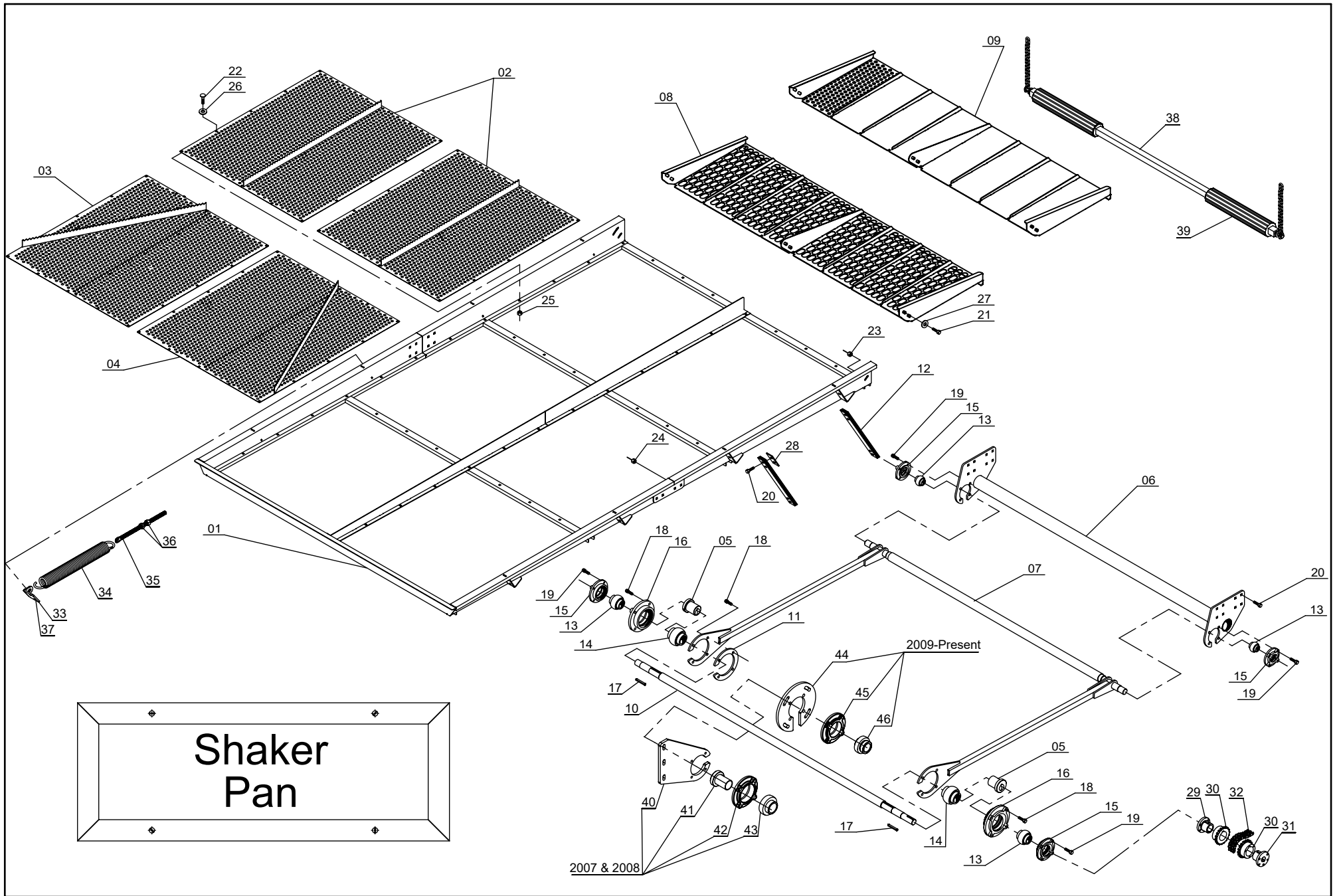


Twin Master Combine

Shaker Pan..... 2-4

Return to this page by clicking the upper right corner of any page in this section.



Shaker Pan

Parts List

<u>Item</u>	<u>Part No.</u>	<u>Qty</u>	<u>Description</u>
1.	034.858-3	1	Shaker Pan Frame
2.	061.290-2	4	Intermediate Shaker Pan Sieve (Std. 5mm Holes)
2a.	511152	2	RH Intermediate Shaker Pan Sieve (Optional 7/64" x 3/4" Oblong Holes)
2b.	511155	2	LH Intermediate Shaker Pan Sieve (Optional 7/64" x 3/4" Oblong Holes)
3.	038.936-8	1	Shaker Pan Sieve, Right Front (Std. 5mm Holes)
3a.	511153	1	Shaker Pan Sieve, Right Front Sieve (Optional 7/64" x 3/4" Oblong Holes)
4.	063.881-7	1	Shaker Pan Sieve, Left Front (Std. 5mm Holes)
4a.	511154	1	Shaker Pan Sieve, Left Front Sieve (Optional 7/64" x 3/4" Oblong Holes)
5.	510634	2	Shaker Eccentric
6.	029.569-0	1	Shaker Arm Mount
7.	3.103.0734-1	1	Eccentric Shaker Arm
8.	032.521-5	1	Final Shaker Pan Sieve, 1/2" x 1" Oblong Holes
8a.	511204	1	Final Shaker Pan Sieve, 3/8" x 1" Oblong Holes (optional)
9.	014.107-4	1	Final Shaker Pan Sieve, 14mm Round Holes
10.	3.107.0452-5	1	Shaker Pan Shaft
11.	050.701-9	2	Shaker Arm Bearing Spacer
12.	031.030-2	40	Shaker Pan Leaf Spring
13.	102100	4	Bearing, 35mm
14.	102161	2	Bearing, 60mm
15.	106054	4	Flange, 35mm
16.	065.609-1	2	Flange, 60mm
17.	111008		Keystock, 10mm x 8mm (12")
18.	3.901.0159-2	8	Bolt, 1/2" x 2"
19.	3.901.0158-4	8	Bolt, 1/2" x 1 3/4"
20.	3.901.0201-2	48	Carriage Bolt, M10 x 35mm
21.	3.901.0073-7	6	Bolt, 5/16" x 3/4"
22.	3.901.0027-1	76	Carriage Bolt, M8 x 25mm
23.	3.902.0015-2	6	Nut, 5/16"
24.	3.902.0032-2	48	Nut, M10
25.	3.902.0008-8	76	Lock Nut, M8
26.	3.934.0003-3	54	Flat Washer, 3/8"
27.	3.934.0004-4	82	Flat Washer, 5/16"
28.	3.104.2671-1	16	Spring Pack Square Washer
29.	102183	1	Bushing, P x 35mm
30.	119245	2	Sprocket, C50P18
31.	102181	1	Bushing, P x 1"
32.	103126	1	C5018 Coupler Chain
33.	510895	1	RH Shaker Pan Assist Spring Mount (2007 – only)
34.	044.873-1	2	Pickup Head Flotation Spring
35.	065.112-3	2	Eyebolt, 5/8" x 12"

Shaker Pan

Parts List

<u>Item</u>	<u>Part No.</u>	<u>Qty</u>	<u>Description</u>
36.	3.902.0016-9	4	Nut, 5/8" NC
37.	510896	1	LH Shaker Pan Assist Spring Mount (opposite of shown)(2007 – only)
38.	510971	1	Complete Bumper Bar Assembly
39.	102112	2	Ribbed Rubber Roller (Included in Item # 38)
40.	510893	1	Shaker Shaft Center Bearing Support (2007 – 2008)
41.	510894	1	Shaker Shaft Center Bearing Adaptor (2007 – 2008)
42.	106069	1	Flange, 50mm (2007 – 2008)
43.	102099	1	Bearing, 50mm (2007 – 2008)
44.	511401	1	Center Bearing Support Adjuster Plate (2009 – Present)
45.	106056	1	Flange, FCF 209 (2009 – Present)
46.	102249	1	Bearing, 1 3/4" (2009 – Present)