

One Step Rod Cutter Rear Pull

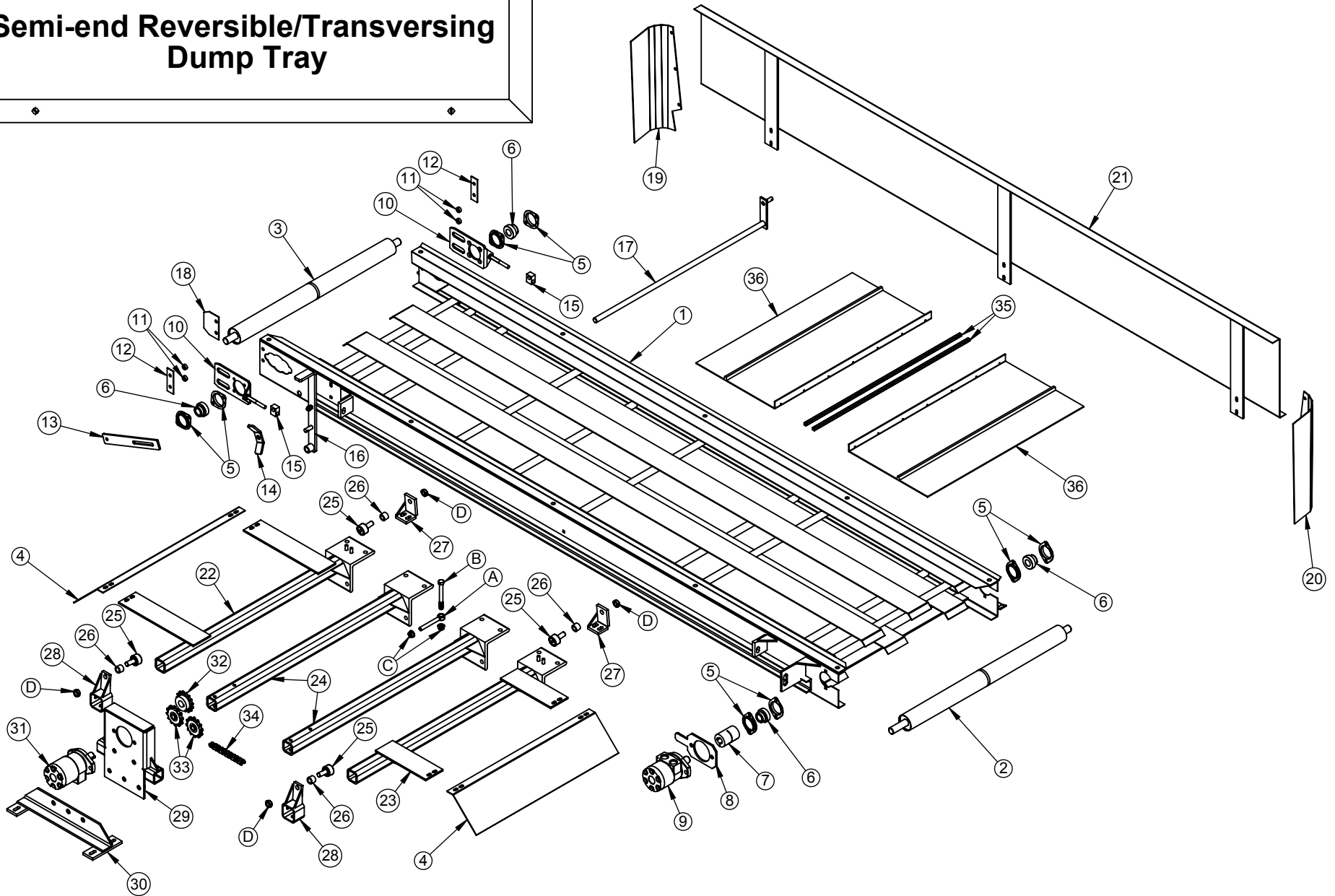
Optional Trays

Section 11

Semi-End Reversible / Transversing 1995 - Present.....	2-5
Center Semi-End Dump 1995 - Present	5-13
6 Row 30" & 8 Row 22" 58" Trays.....	5-7
8 Row 30" & 12 Row 22" 88" Trays.....	8-10
12 Row 22" 76" & 118" Trays	11-13
42" Wide Center Semi-End Dump.....	14-15
Full End Dump 1995 - Present.....	17-22
6 Row 30" 178" Tray.....	17-18
6 Row 36" 230" Tray.....	19-20
6 Row 38" 240" Tray.....	21-22

Return to this page by clicking the upper right corner of any page in this section.

Semi-end Reversible/Transversing Dump Tray



Semi End Reversible/Transversing Dump 6 Row 30" & 8 Row 22"

118" Tray

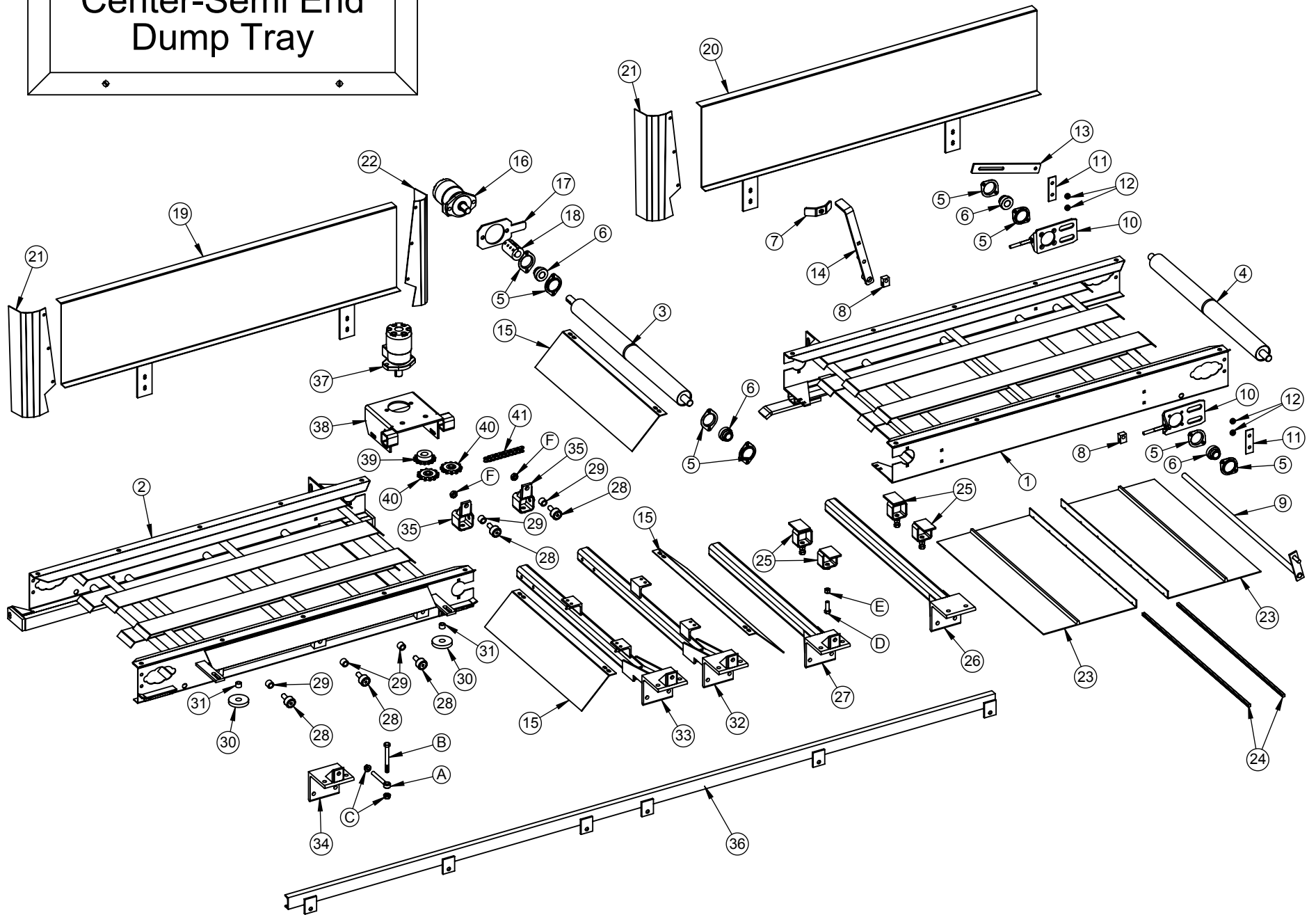
Parts List

<u>Item No.</u>	<u>Part No.</u>	<u>Qty.</u>	<u>Description</u>
1.	905112	1	Transversing Dump Tray (weld assembly)
2.	901175	1	Crowned Roller-keyed
3.	901176	1	Conveyor Roller-no key
4.	900278	2	Universal Deflector Shield (tray end)
5.	106013	4	Flangette, 1" Bearing 2 Hole
6.	102005	4	Bearing, 1" Insert with lock collar
7.	103017	1	Coupler, 1" x 3" Split
8.	900225	1	Hydraulic Motor Mount
9.	113022	1	Motor, Canvas (MG Series)
10.	901150	2	Bracket, 1" Bearing Belt Tightener
11.	900498	4	Bracket Spacer
12.	900277	2	Bearing Bracket Clamp
13.	900199	1	Belt Tightener
14.	106016	1	Fastener Wing
15.	900313	2	Swivel Adapter
16.	900575	1	Belt Tightener Lever
17.	900386	1	Crank Tightener
18.	804285	1	Belt Tightener Foliage Shield
19.	900015	1	Tray Back Deflector, LH
20.	900016	1	Tray Back Deflector, RH
21.	905110-A	1	Transversing Tray Back
22.	804091-C	1	LH Transversing Tray Arm
23.	804092-C	1	RH Transversing Tray Arm
24.	804090-A	2	Hydraulic Motor Mount Tray Arm
25.	102080	4	Tray Roller Bearing
26.	900181	4	Roller Bearing Spacer
27.	804104-A	2	Front Slide Lock
28.	804095-A	2	Rear Slide Lock
29.	990100-B	1	Hydraulic Motor Mount
30.	804093-A	1	Hydraulic Motor Tray Arm Mount
31.	113023	1	Motor, Transversing Tray (MF Series)
32.	119006	1	Sprocket, 50 BS 15 x 1"
33.	119010	2	Sprocket, Idler 05013E10
34.	103085	1	Chain, 50 Roller-144 Pins
35.	102020	1	Belt Connector Bar (with bolts)
36.	102023	1	Belt, SE Draper (with bar-234")
All Shown	905113	1	Complete Transversing Dump Tray (hydraulic hoses not included)

Semi End Reversible/Transversing Dump 6 Row 30" & 8 Row 22"**118" Tray****Hardware List**

<u>Item No.</u>	<u>Part No.</u>	<u>Qty.</u>	<u>Description</u>
A.	118025	8	1/2" x 4 1/4" NC Eye Bolt-Grade 5
B.		8	1/2" x 4 1/2" NC Hex Bolt-Grade 5
C.		16	1/2" NC Whiz Nut-Grade 5
D.		4	5/8" NF Jam Nut

Center-Semi End Dump Tray



Center–Semi End Dump 6 Row 30” & 8 Row 22”

58” Trays

Parts List

<u>Item No.</u>	<u>Part No.</u>	<u>Qty.</u>	<u>Description</u>
1.	902273	1	L.H. Stationary Tray (weld assembly)
2.	902274	1	R.H. Transversing Tray (weld assembly)
3.	901175	2	Crowned Roller–keyed
4.	901176	2	Conveyor Roller–no key
5.	106013	8	Flangette, 2-Hole
6.	102005	8	Bearing, 1” Insert with Lock Collar
7.	106016	2	Fastener, Wing
8.	900313	4	Swivel Adapter
9.	900386	2	Crank Tightener
10.	901150	4	Belt Tightener Bracket–1” Bearing
11.	900277	4	Bearing Bracket Clamp
12.	900498	8	Bracket Spacer
13.	900199	2	Belt Tightener
14.	900575	2	Belt Tightener Lever
15.	900278	3	Tray End Deflector Shield
16.	113022	2	Motor, Canvas (MG Series)
17.	900225	2	Hydraulic Motor Mount
18.	103017	2	Coupler, 1” × 3” Split
19.	902005-B	1	R.H. Transversing Tray Back
20.	902004-B	1	L.H. Stationary Tray Back
21.	900016	2	R.H. Deflector Shield
22.	900015	1	L.H. Deflector Shield
23.	102022	2	Belt, Center Draper with Bar (114”)
24.	102020	2	Belt Connector Bar with Bolts
25.	900551	4	Stationary Tray Mount Slide Locks
26.	900583-A	1	Stationary Tray Support Arm L.H.
27.	804040	1	Stationary Tray Support Arm R.H.
28.	102080	5	Bearing, Tray Roller
29.	900181	5	Roller Bearing Spacer
30.	804086	2	Torque Stop Roller
31.	200276	2	Bushing, Torque Stop Roller
32.	804131-A	1	L.H. Transversing Tray Arm (w/double bar frame)
32a.	804051-A	1	L.H. Transversing Tray Arm (w/single bar frame)
33.	804145-A	1	R.H. Transversing Tray Arm (w/double bar frame)
33a.	804050-A	1	R.H. Transversing Tray Arm (w/single bar frame)
34.	804105-A	3	Front Roller Channel Mount
35.	804120-A	2	Rear Slide Lock
36.	804113	1	Front Roller Channel
37.	113023	1	Motor, Transversing Tray (MF Series)
38.	804067-B	1	Hydraulic Motor Mount

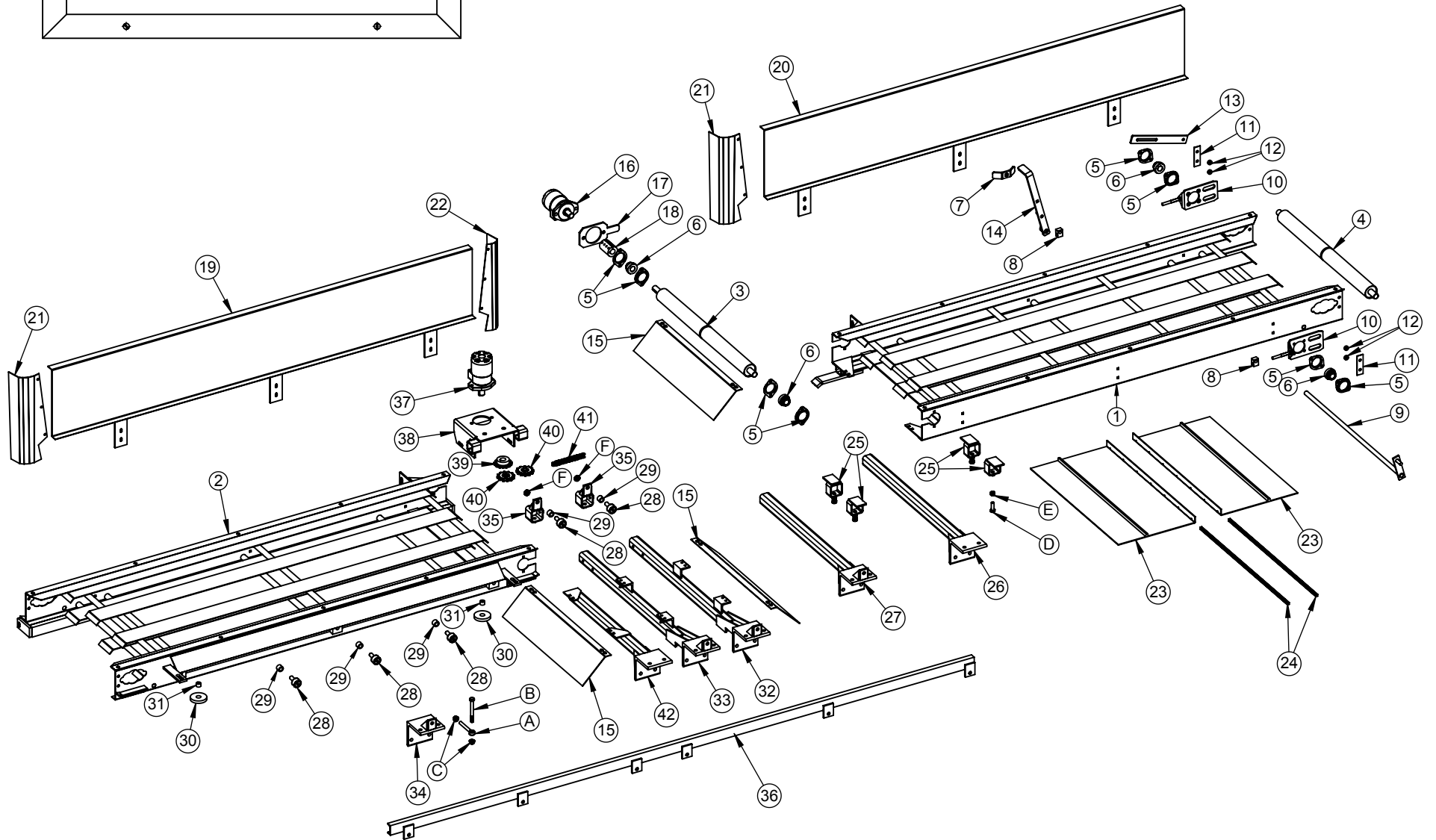
Center–Semi End Dump 6 Row 30” & 8 Row 22”
58” Trays**Parts List**

<u>Item No.</u>	<u>Part No.</u>	<u>Qty.</u>	<u>Description</u>
39.	119006	1	Sprocket, 50BS 15 × 1”
40.	119010	2	Sprocket, Idler 05013E10
41.	103087	1	Chain, 50 Roller (107 Pins)
	902277	1	Complete L.H. Stationary Tray (hydraulic hoses not included)
	902278	1	Complete R.H. Transversing Tray (hydraulic hoses not included)

Hardware List

<u>Item No.</u>	<u>Part No.</u>	<u>Qty.</u>	<u>Description</u>
A.	118025	14	1/2” x 4 1/4” NC Eye Bolt–Grade 5
B.		14	1/2” x 4 1/2” NC Hex Bolt–Grade 5
C.		28	1/2” NC Whiz Nut–Grade 5
D.		4	1/2” x 1 1/2” NC Hex Bolt
E.		4	1/2” NC Hex Nut
F.		2	5/8” NF Jam Nut

Center-Semi End Dump Tray



Center–Semi End Dump 8 Row 30” & 12 Row 22”

88” Trays

Parts List

<u>Item No.</u>	<u>Part No.</u>	<u>Qty.</u>	<u>Description</u>
1.	902182	1	L.H. Stationary Tray (weld assembly)
2.	902183	1	R.H. Transversing Tray (weld assembly)
3.	901175	2	Crowned Roller–keyed
4.	901176	2	Conveyor Roller–no key
5.	106013	8	Flangette, 2-Hole
6.	102005	8	Bearing, 1” Insert with Lock Collar
7.	106016	2	Fastener, Wing
8.	900313	4	Swivel Adapter
9.	900386	2	Crank Tightener
10.	901150	4	Belt Tightener Bracket–1” Bearing
11.	900277	4	Bearing Bracket Clamp
12.	900498	8	Bracket Spacer
13.	900199	2	Belt Tightener
14.	900575	2	Belt Tightener Lever
15.	900278	3	Tray End Deflector Shield
16.	113022	2	Motor, Canvas (MG Series)
17.	900225	2	Hydraulic Motor Mount
18.	103017	2	Coupler, 1” × 3” Split
19.	902057-A	1	R.H. Transversing Tray Back
20.	902058-A	1	L.H. Stationary Tray Back
21.	900016	2	R.H. Deflector Shield
22.	900015	1	L.H. Deflector Shield
23.	102058	2	Belt, Center Draper with Bar (174”)
24.	102020	2	Belt Connector Bar with Bolts
25.	900551	4	Stationary Tray Mount Slide Locks
26.	900583-A	1	Stationary Tray Support Arm L.H.
27.	804040	1	Stationary Tray Support Arm R.H.
28.	102080	5	Bearing, Tray Roller
29.	900181	5	Roller Bearing Spacer
30.	804086	2	Torque Stop Roller
31.	200276	2	Bushing, Torque Stop Roller
32.	804131-A	1	L.H. Transversing Tray Arm
33.	804145-A	1	R.H. Transversing Tray Arm (12 row 22” only)
33a.	804130-A	1	R.H. Transversing Tray Arm (8 row 30” only)
34.	804105-A	3	Front Roller Channel Mount
35.	804120-A	2	Rear Slide Lock
36.	804080-A	1	Front Roller Channel (12 row 22” only)
36a.	804125-B	1	Front Roller Channel (8 row 30” only)
37.	113023	1	Motor, Transversing Tray (MF Series)
38.	804067-B	1	Hydraulic Motor Mount

Center–Semi End Dump 8 Row 30” & 12 Row 22”

88” Trays

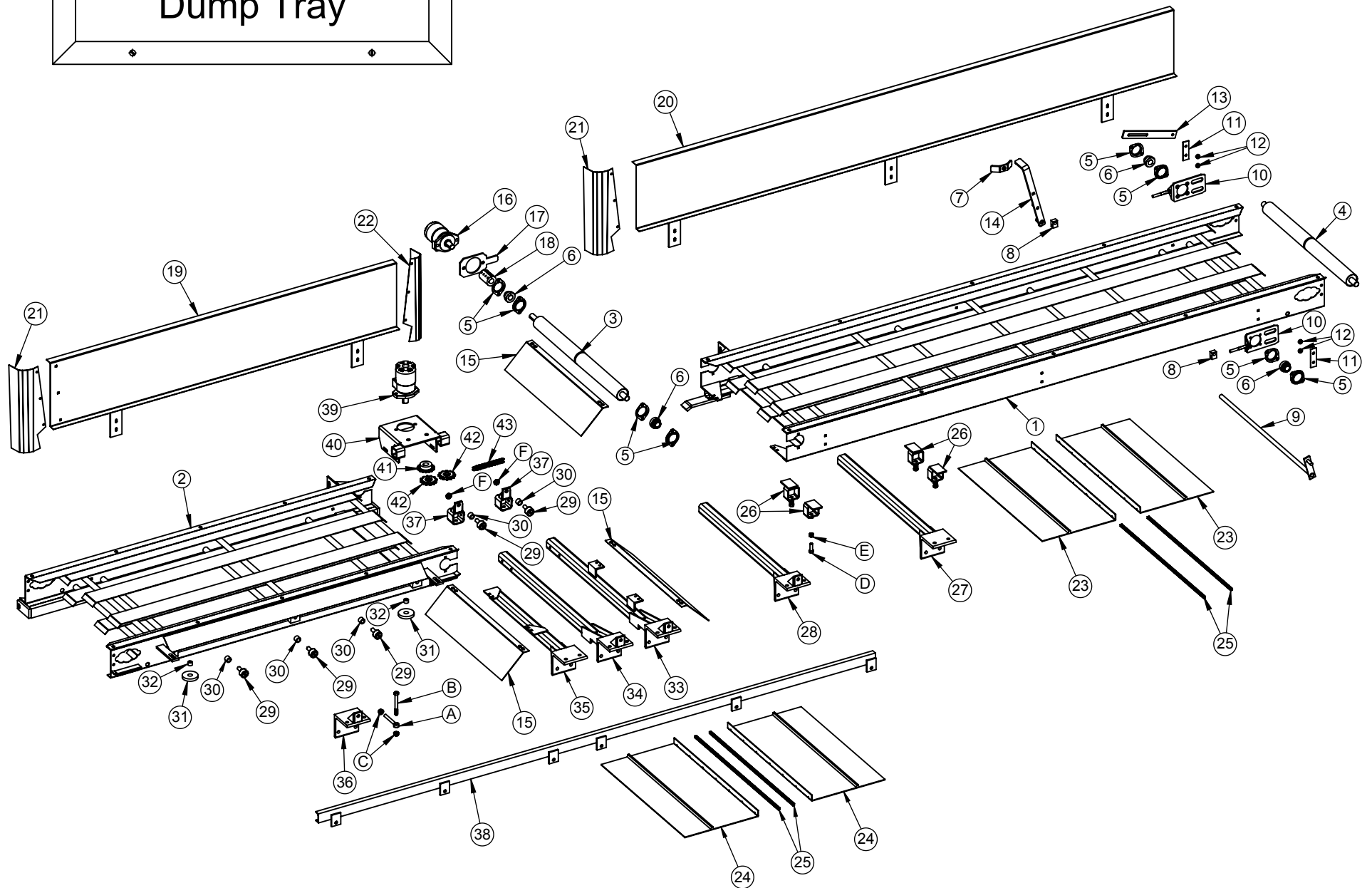
Parts List

<u>Item No.</u>	<u>Part No.</u>	<u>Qty.</u>	<u>Description</u>
39.	119006	1	Sprocket, 50BS 15 x 1”
40.	119010	2	Sprocket, Idler 05013E10
41.	103087	1	Chain, 50 Roller (107 Pins)
42.	804140-A	1	Tray End Deflector Support Arm (8 row 30” only)
	902180	1	Complete L.H. Stationary Tray (hydraulic hoses not included)
	902181	1	Complete R.H. Transversing Tray (hydraulic hoses not included)

Hardware List

<u>Item No.</u>	<u>Part No.</u>	<u>Qty.</u>	<u>Description</u>
A.	118025	14	1/2” x 4 1/4” NC Eye Bolt–Grade 5
B.		14	1/2” x 4 1/2” NC Hex Bolt–Grade 5
C.		28	1/2” NC Whiz Nut–Grade 5
D.		4	1/2” x 1 1/2” NC Hex Bolt
E.		4	1/2” NC Hex Nut
F.		2	5/8” NF Jam Nut

Center-Semi End Dump Tray



Center–Semi End Dump 12 Row 22”

Offset 76” & 118” Trays

Parts List

<u>Item No.</u>	<u>Part No.</u>	<u>Qty.</u>	<u>Description</u>
1.	902403	1	L.H. Stationary Tray (weld assembly)
2.	902401	1	R.H. Transversing Tray (weld assembly)
3.	901175	2	Crowned Roller–keyed
4.	901176	2	Conveyor Roller–no key
5.	106013	8	Flangette, 2-Hole
6.	102005	8	Bearing, 1” Insert with Lock Collar
7.	106016	2	Fastener, Wing
8.	900313	4	Swivel Adapter
9.	900386	2	Crank Tightener
10.	901150	4	Belt Tightener Bracket–1” Bearing
11.	900277	4	Bearing Bracket Clamp
12.	900498	8	Bracket Spacer
13.	900199	2	Belt Tightener
14.	900575	2	Belt Tightener Lever
15.	900278	3	Tray End Deflector Shield
16.	113022	2	Motor, Canvas (MG Series)
17.	900225	2	Hydraulic Motor Mount
18.	103017	2	Coupler, 1” × 3” Split
19.	902007	1	R.H. Transversing Tray Back
20.	900007-B	1	L.H. Stationary Tray Back
21.	900016	2	R.H. Deflector Shield
22.	900015	1	L.H. Deflector Shield
23.	102023	2	Belt, Center Draper with Bar (234”)
24.	102069	2	Belt, Center Draper with Bar (150”)
25.	102020	2	Belt Connector Bar with Bolts
26.	900551	4	Stationary Tray Mount Slide Locks
27.	900583-A	1	Stationary Tray Support Arm L.H.
28.	804040	1	Stationary Tray Support Arm R.H.
29.	102080	5	Bearing, Tray Roller
30.	900181	5	Roller Bearing Spacer
31.	804086	2	Torque Stop Roller
32.	200276	2	Bushing, Torque Stop Roller
33.	804131-A	1	L.H. Transversing Tray Arm
34.	804130-A	1	R.H. Transversing Tray Arm
35.	804140-A	1	Tray End Deflector Support Arm
36.	804105-A	3	Front Roller Channel Mount
37.	804120-A	2	Rear Slide Lock
38.	804190-A	1	Front Roller Channel
39.	113023	1	Motor, Transversing Tray (MF Series)
40.	804067-B	1	Hydraulic Motor Mount

Center–Semi End Dump 12 Row 22”

Offset 76” & 118” Trays

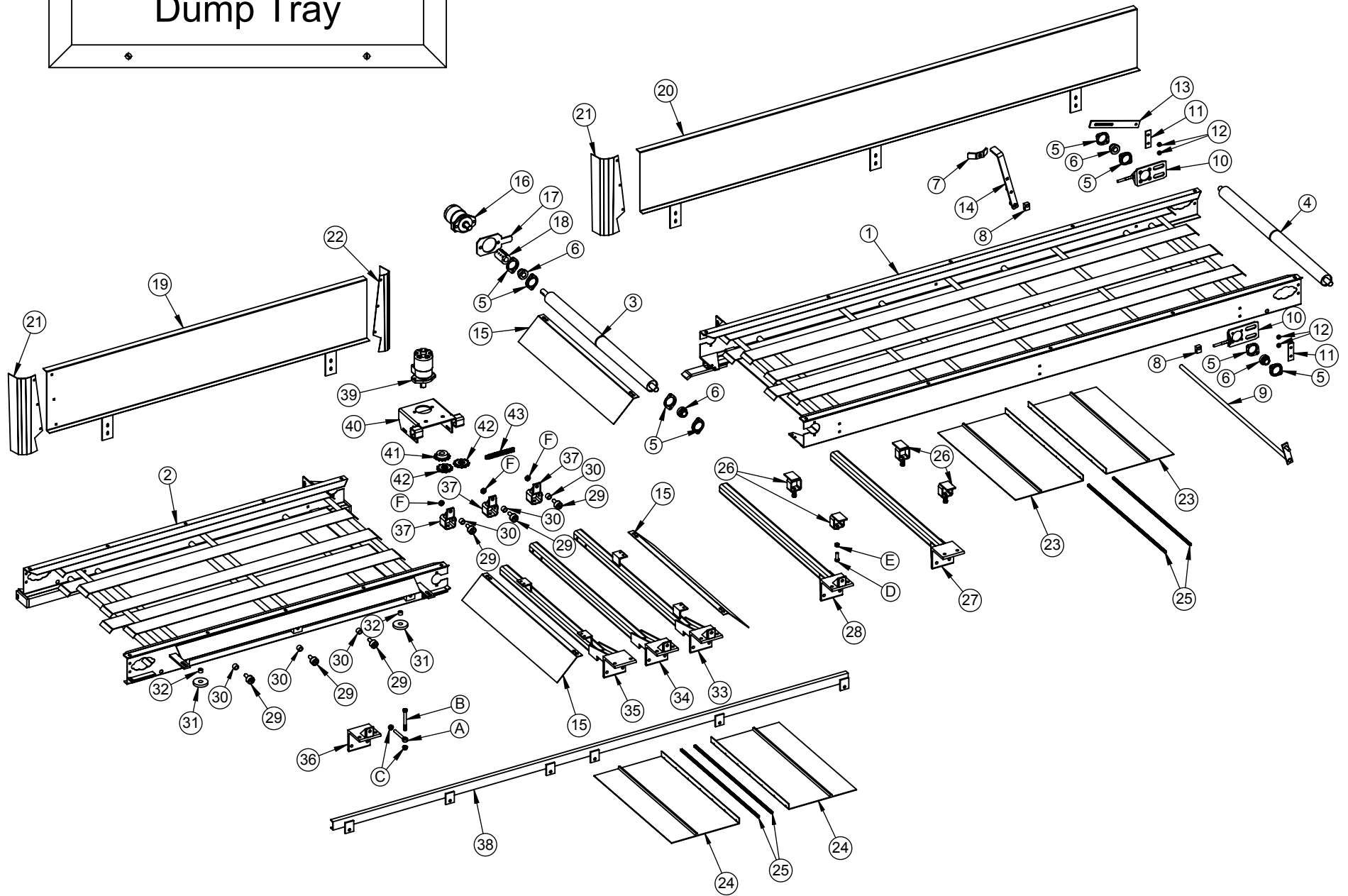
Parts List

<u>Item No.</u>	<u>Part No.</u>	<u>Qty.</u>	<u>Description</u>
41.	119006	1	Sprocket, 50BS 15 × 1”
42.	119010	2	Sprocket, Idler 05013E10
43.	103087	1	Chain, 50 Roller (107 Pins)
	902404	1	Complete L.H. Stationary Tray (hydraulic hoses not included)
	902402	1	Complete R.H. Transversing Tray (hydraulic hoses not included)

Hardware List

<u>Item No.</u>	<u>Part No.</u>	<u>Qty.</u>	<u>Description</u>
A.	118025	16	1/2” x 4 1/4” NC Eye Bolt–Grade 5
B.		16	1/2” x 4 1/2” NC Hex Bolt–Grade 5
C.		32	1/2” NC Whiz Nut–Grade 5
D.		4	1/2” x 1 1/2” NC Hex Bolt
E.		4	1/2” NC Hex Nut
F.		2	5/8” NF Jam Nut

Center-Semi End Dump Tray



Center–Semi End Dump 12 Row 22”

Offset 76” & 118” x 42” Wide Trays

Parts List

<u>Item No.</u>	<u>Part No.</u>	<u>Qty.</u>	<u>Description</u>
1.	902403-WD	1	L.H. Stationary Tray (weld assembly)
2.	902401-WD	1	R.H. Transversing Tray (weld assembly)
3.	804245	2	Crowned Roller–keyed
4.	804246	2	Conveyor Roller–no key
5.	106013	8	Flangette, 2-Hole
6.	102005	8	Bearing, 1” Insert with Lock Collar
7.	106016	2	Fastener, Wing
8.	900313	4	Swivel Adapter
9.	804250	2	Crank Tightener
10.	901150	4	Belt Tightener Bracket–1” Bearing
11.	900277	4	Bearing Bracket Clamp
12.	900498	8	Bracket Spacer
13.	900199	2	Belt Tightener
14.	900575	2	Belt Tightener Lever
15.	804242	3	Tray End Deflector Shield
16.	113022	2	Motor, Canvas (MG Series)
17.	900225	2	Hydraulic Motor Mount
18.	103017	2	Coupler, 1” x 3” Split
19.	902007	1	R.H. Transversing Tray Back
20.	900007-B	1	L.H. Stationary Tray Back
21.	900016	2	R.H. Deflector Shield
22.	900015	1	L.H. Deflector Shield
23.	102288	2	Belt, Center Draper with Bar (234”)
24.	102290	2	Belt, Center Draper with Bar (150”)
25.	102160	2	Belt Connector Bar with Bolts
26.	900551	4	Stationary Tray Mount Slide Locks
27.	804238-A	1	Stationary Tray Support Arm L.H.
28.	804295	1	Stationary Tray Support Arm R.H.
29.	102080	6	Bearing, Tray Roller
30.	900181	6	Roller Bearing Spacer
31.	804086	2	Torque Stop Roller
32.	200276	2	Bushing, Torque Stop Roller
33.	804265-A	1	L.H. Transversing Tray Arm
34.	804264-A	1	R.H. Transversing Tray Arm
35.	804294	1	Tray End Deflector Support Arm
36.	804105-A	3	Front Roller Channel Mount
37.	804120-A	3	Rear Slide Lock
38.	804190-A	1	Front Roller Channel
39.	113023	1	Motor, Transversing Tray (MF Series)
40.	804067-B	1	Hydraulic Motor Mount

Center–Semi End Dump 12 Row 22”

Offset 76” & 118” x 42” Wide Trays

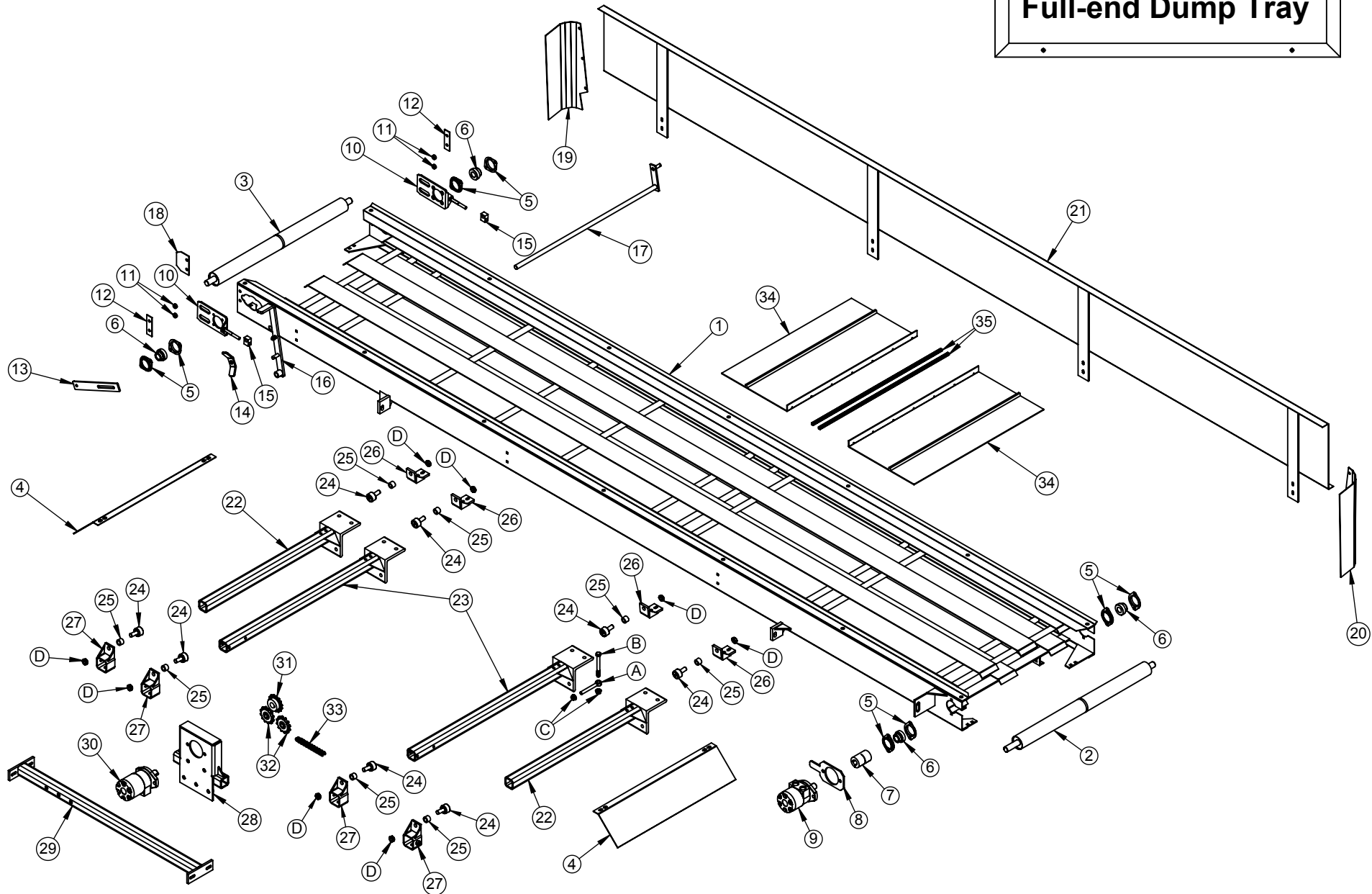
Parts List

<u>Item No.</u>	<u>Part No.</u>	<u>Qty.</u>	<u>Description</u>
41.	119006	1	Sprocket, 50BS 15 × 1”
42.	119010	2	Sprocket, Idler 05013E10
43.	103087	1	Chain, 50 Roller (107 Pins)
	902404-WD	1	Complete L.H. Stationary Tray (hydraulic hoses not included)
	902402-WD	1	Complete R.H. Transversing Tray (hydraulic hoses not included)

Hardware List

<u>Item No.</u>	<u>Part No.</u>	<u>Qty.</u>	<u>Description</u>
A.	118025	16	1/2” x 4 1/4” NC Eye Bolt–Grade 5
B.		16	1/2” x 4 1/2” NC Hex Bolt–Grade 5
C.		32	1/2” NC Whiz Nut–Grade 5
D.		4	1/2” x 1 1/2” NC Hex Bolt
E.		4	1/2” NC Hex Nut
F.		2	5/8” NF Jam Nut

Full-end Dump Tray



Full End Dump 6030 Model, 178" Tray

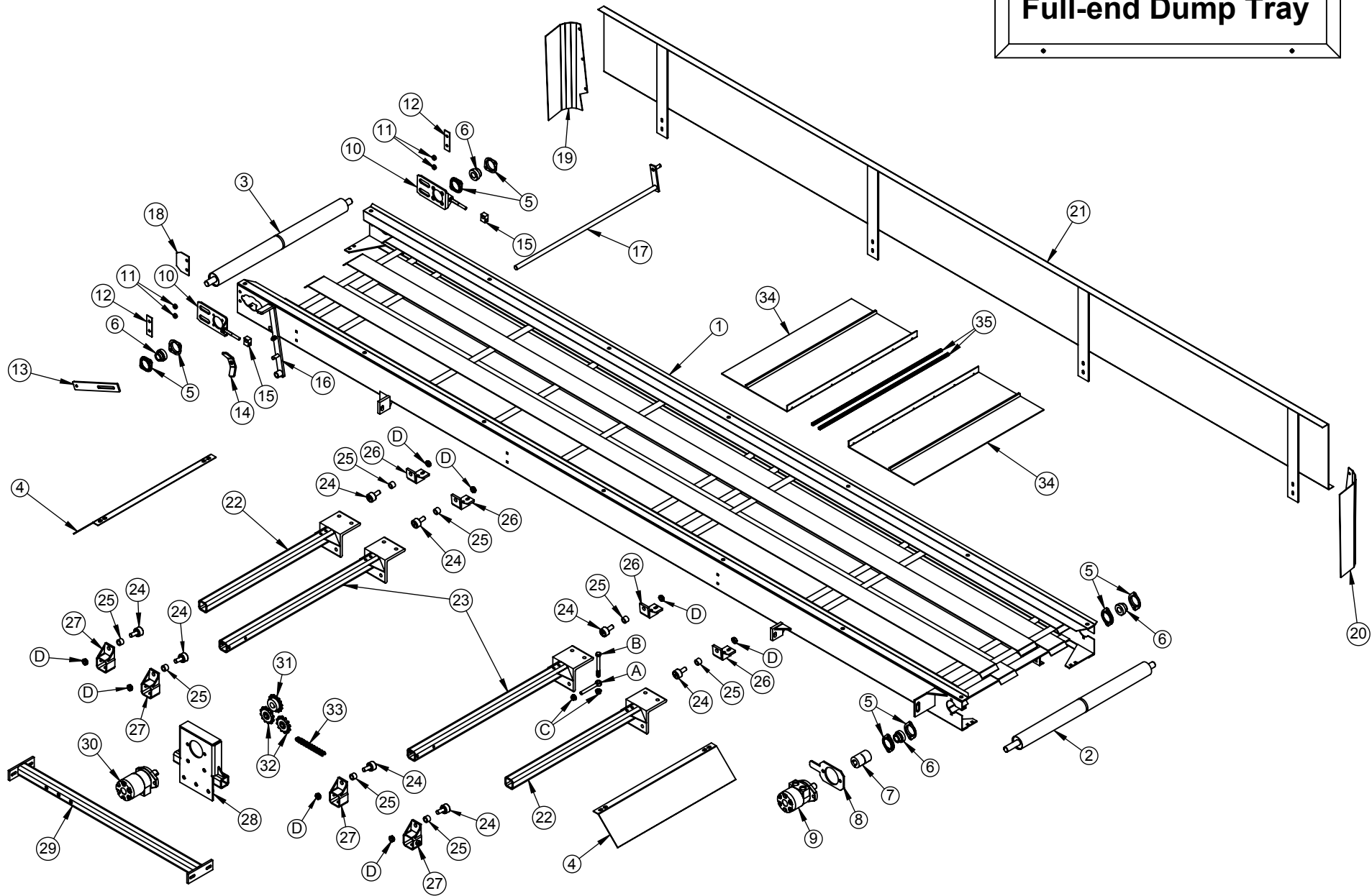
Parts List

<u>Item No.</u>	<u>Part No.</u>	<u>Qty.</u>	<u>Description</u>
1.	902193	1	Full End Dump Tray Weld Assembly
2.	901175	1	Crowned Roller-keyed
3.	901176	1	Conveyor Roller-no key
4.	900278	2	Deflector Shield Tray End
5.	106013	4	Flangette, 1" Bearing-2 Hole
6.	102005	4	Bearing, 1" Insert with Lock Collar
7.	103017	1	Coupler, 1" x 3" Split
8.	900225	1	Hydraulic Motor Mount
9.	113022	1	Motor, Canvas (MG Series)
10.	901150	2	Bracket, 1" Bearing Belt Tightener
11.	900498	4	Bracket Spacer
12.	900277	2	Bearing Bracket Clamp
13.	900199	1	Belt Tightener
14.	106016	1	Fastener, Wing
15.	900313	2	Swivel Adapter
16.	900575	1	Belt Tightener Lever
17.	900386	1	Crank Tightener
18.	804285	1	Belt Tightener Deflector
19.	900015	1	Tray Back Deflector - L.H.
20.	900016	1	Tray Back Deflector - R.H.
21.	902068	1	Transversing Tray Back
22.	804021	2	Transversing Tray Arm
23.	804020-A	2	Hydraulic Motor Mount Tray Arm
24.	102080	8	Tray Roller Bearing
25.	900181	8	Roller Bearing Spacer
26.	804077-B	4	Front Slide Lock
27.	804030-A	4	Rear Slide Lock
28.	990100-B	1	Hydraulic Motor Mount
29.	804024-A	1	Hydraulic Motor Tray Arm Mount
30.	113023	1	Motor, Transversing Tray (MF Series)
31.	119006	1	Sprocket, 50BS15 x 1"
32.	119010	2	Sprocket, Idler 05013E10
33.	103085	1	Chain, 50 Roller (144 Pins)
34.	102057	1	Belt, Full End Draper with Bar (354")
35.	102020	1	Belt Connector Bar with Bolts
	902196	1	Complete Full End Dump Tray (hydraulic hoses not included)

Hardware List

<u>Item No.</u>	<u>Part No.</u>	<u>Qty.</u>	<u>Description</u>
A.	118025	8	1/2" x 4 1/4" NC Eye Bolt-Grade 5
B.		8	1/2" x 4 1/2" NC Hex Bolt-Grade 5
C.		16	1/2" NC Whiz Nut-Grade 5
D.		8	5/8" NF Jam Nut

Full-end Dump Tray



Full End Dump 6036 Model, 230" Tray

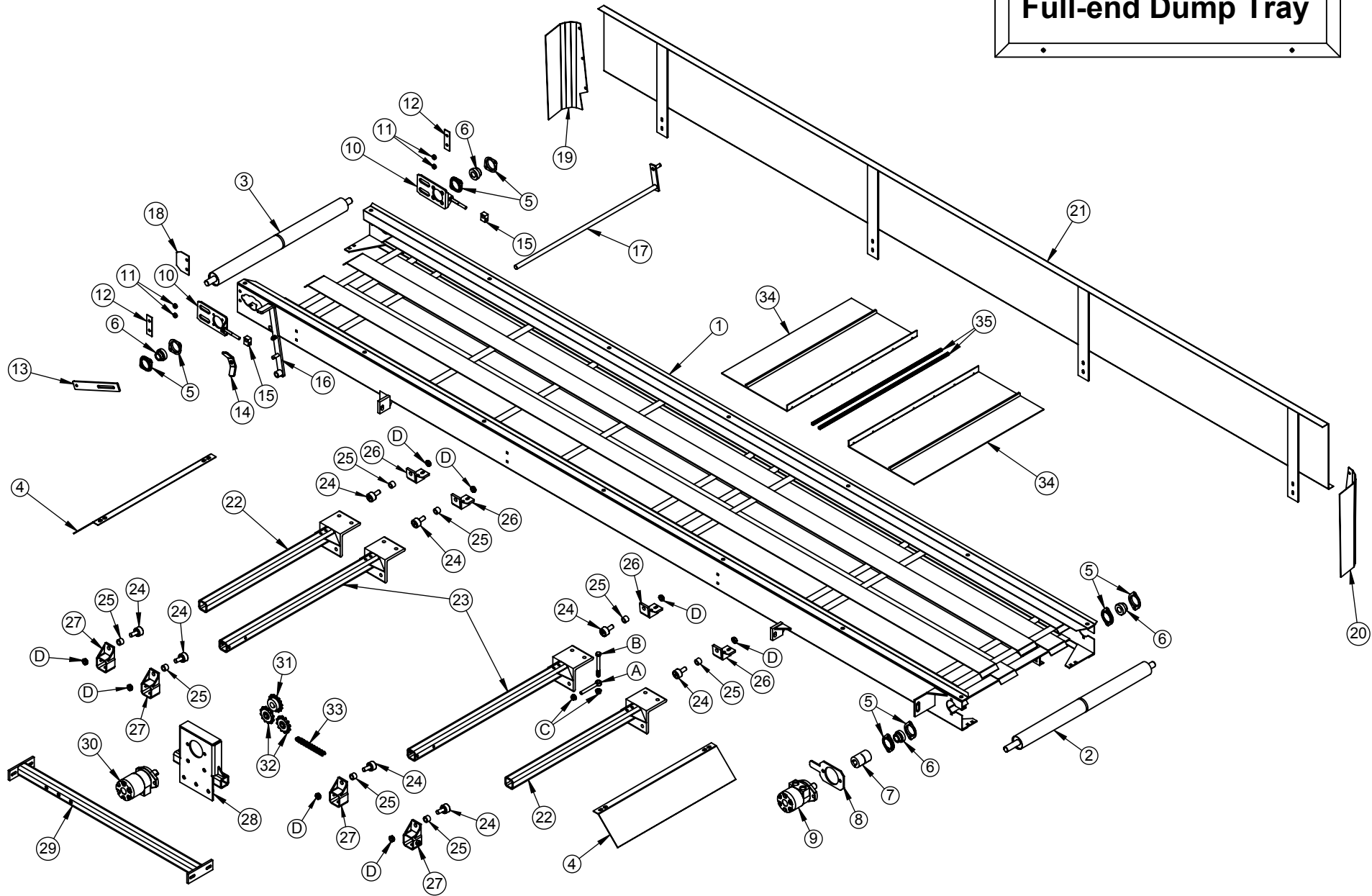
Parts List

<u>Item No.</u>	<u>Part No.</u>	<u>Qty.</u>	<u>Description</u>
1.	902269	1	Full End Dump Tray Weld Assembly
2.	901175	1	Crowned Roller-keyed
3.	901176	1	Conveyor Roller-no key
4.	900278	2	Deflector Shield Tray End
5.	106013	4	Flangette, 1" Bearing-2 Hole
6.	102005	4	Bearing, 1" Insert with Lock Collar
7.	103017	1	Coupler, 1" x 3" Split
8.	900225	1	Hydraulic Motor Mount
9.	113022	1	Motor, Canvas (MG Series)
10.	901150	2	Bracket, 1" Bearing Belt Tightener
11.	900498	4	Bracket Spacer
12.	900277	2	Bearing Bracket Clamp
13.	900199	1	Belt Tightener
14.	106016	1	Fastener, Wing
15.	900313	2	Swivel Adapter
16.	900575	1	Belt Tightener Lever
17.	900386	1	Crank Tightener
18.	804285	1	Belt Tightener Deflector
19.	900015	1	Tray Back Deflector - L.H.
20.	900016	1	Tray Back Deflector - R.H.
21.	902105	1	Transversing Tray Back
22.	804021	2	Transversing Tray Arm
23.	804020-A	2	Hydraulic Motor Mount Tray Arm
24.	102080	8	Tray Roller Bearing
25.	900181	8	Roller Bearing Spacer
26.	804077-B	4	Front Slide Lock
27.	804030-A	4	Rear Slide Lock
28.	990100-B	1	Hydraulic Motor Mount
29.	804024-A	1	Hydraulic Motor Tray Arm Mount
30.	113023	1	Motor, Transversing Tray (MF Series)
31.	119006	1	Sprocket, 50BS15 x 1"
32.	119010	2	Sprocket, Idler 05013E10
33.	103085	1	Chain, 50 Roller (144 Pins)
34.	102063	1	Belt, Full End Draper with Bar (458")
35.	102020	1	Belt Connector Bar with Bolts
	902270	1	Complete Full End Dump Tray (hydraulic hoses not included)

Hardware List

<u>Item No.</u>	<u>Part No.</u>	<u>Qty.</u>	<u>Description</u>
A.	118025	8	1/2" x 4 1/4" NC Eye Bolt-Grade 5
B.		8	1/2" x 4 1/2" NC Hex Bolt-Grade 5
C.		16	1/2" NC Whiz Nut-Grade 5
D.		8	5/8" NF Jam Nut

Full-end Dump Tray



Full End Dump 6038 Model, 240" Tray

Parts List

<u>Item No.</u>	<u>Part No.</u>	<u>Qty.</u>	<u>Description</u>
1.	902271	1	Full End Dump Tray Weld Assembly
2.	901175	1	Crowned Roller-keyed
3.	901176	1	Conveyor Roller-no key
4.	900278	2	Deflector Shield Tray End
5.	106013	4	Flangette, 1" Bearing-2 Hole
6.	102005	4	Bearing, 1" Insert with Lock Collar
7.	103017	1	Coupler, 1" x 3" Split
8.	900225	1	Hydraulic Motor Mount
9.	113022	1	Motor, Canvas (MG Series)
10.	901150	2	Bracket, 1" Bearing Belt Tightener
11.	900498	4	Bracket Spacer
12.	900277	2	Bearing Bracket Clamp
13.	900199	1	Belt Tightener
14.	106016	1	Fastener, Wing
15.	900313	2	Swivel Adapter
16.	900575	1	Belt Tightener Lever
17.	900386	1	Crank Tightener
18.	804285	1	Belt Tightener Deflector
19.	900015	1	Tray Back Deflector - L.H.
20.	900016	1	Tray Back Deflector - R.H.
21.	902113	1	Transversing Tray Back
22.	804021	2	Transversing Tray Arm
23.	804020-A	2	Hydraulic Motor Mount Tray Arm
24.	102080	8	Tray Roller Bearing
25.	900181	8	Roller Bearing Spacer
26.	804077-B	4	Front Slide Lock
27.	804030-A	4	Rear Slide Lock
28.	990100-B	1	Hydraulic Motor Mount
29.	804024-A	1	Hydraulic Motor Tray Arm Mount
30.	113023	1	Motor, Transversing Tray (MF Series)
31.	119006	1	Sprocket, 50BS15 x 1"
32.	119010	2	Sprocket, Idler 05013E10
33.	103085	1	Chain, 50 Roller (144 Pins)
34.	102064	1	Belt, Full End Draper with Bar (478")
35.	102020	1	Belt Connector Bar with Bolts
	902272	1	Complete Full End Dump Tray (hydraulic hoses not included)

Hardware List

<u>Item No.</u>	<u>Part No.</u>	<u>Qty.</u>	<u>Description</u>
A.	118025	8	1/2" x 4 1/4" NC Eye Bolt-Grade 5
B.		8	1/2" x 4 1/2" NC Hex Bolt-Grade 5
C.		16	1/2" NC Whiz Nut-Grade 5
D.		8	5/8" NF Jam Nut