

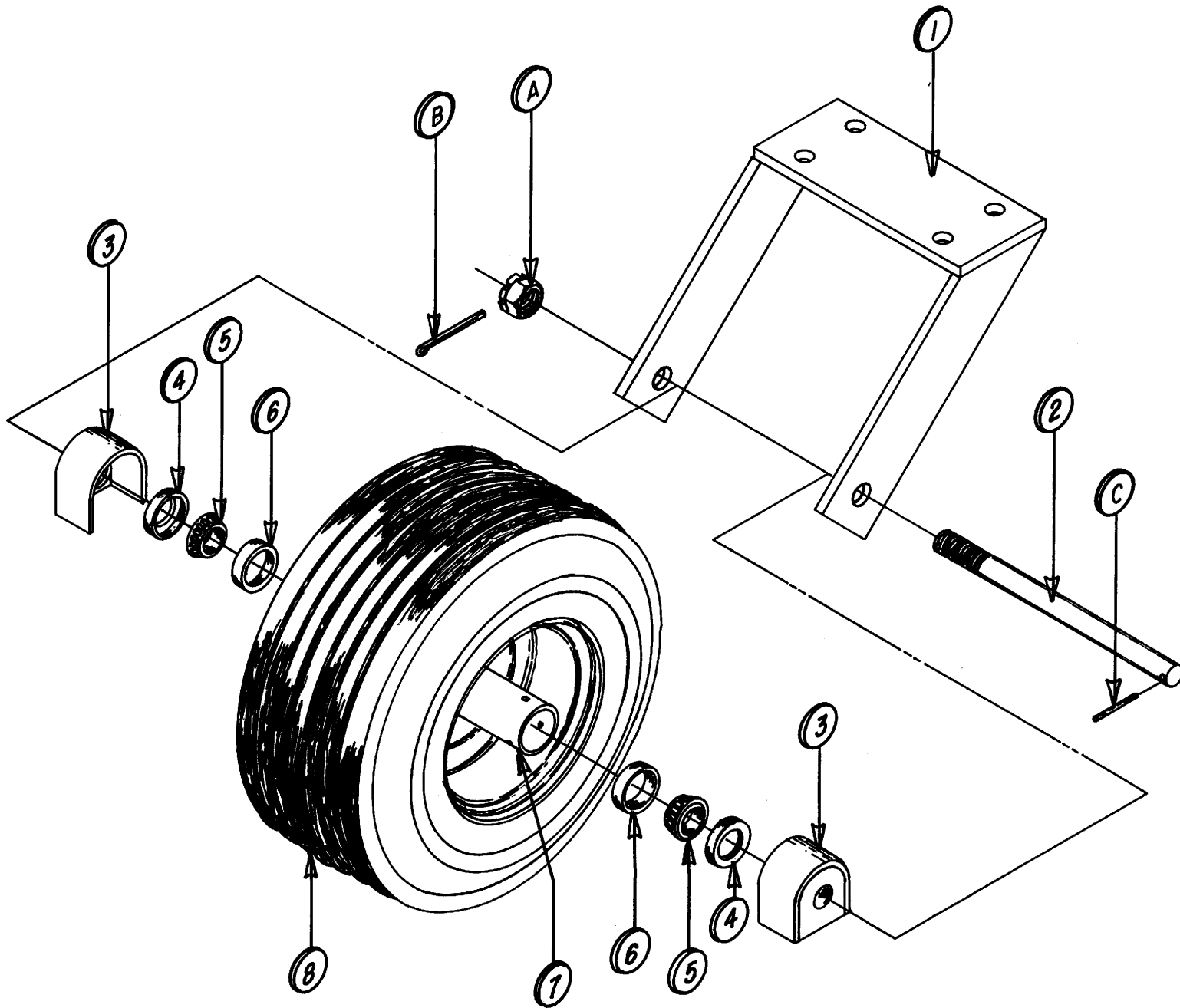
One Step Rod Cutter Rear Pull

Gauge Wheel

Section 5

Rear Gauge Wheels – Model Years 1988 - 1991	2-3
Rear Gauge Wheels – Model Year 1992	4-5
Rear Gauge Wheels – Model Years 1993 – Present.....	6-7
Front Gauge Wheels – Model Years 1997 – Present	8-9
Front Tire Divider – Model Years 1992 – Present.....	10-1
Rear Gauge Wheels – Model 12 Row 30.....	12-13

Return to this page by clicking the upper right corner of any page in this section.



MAIN FRAME WHEEL ASSEMBLY

MAIN FRAME WHEEL ASSEMBLY - (1988 - 1991)

Parts List

<u>Item No.</u>	<u>Part No.</u>	<u>Description</u>
1.	900249**	Wheel Fork Assembly
2.	990080	Axle
3.	990173**	Dust Guard
4.	119024	Seal, Bearing
5.	102001	Bearing, Wheel Cone
6.	102002	Bearing, Wheel Race Cup
7.	123000	Wheels, Steel } Replaced by 123018—Requires Conversion Kit *
8.	120000	Tires
Not Shown	900247**	Fender
Not Shown	900252**	Mud Scraper Bracket
Not Shown	900210**	Mud Scraper

Hardware List

<u>Item No.</u>	<u>Part No.</u>	<u>Description</u>
A.		1" NF Castellated Hex Nut
B.		3/16" Cotter Pin
C.		1/4" Roll Pin
Not Shown	121003	Type D, U-Bolt (2 Required per gauge wheel)
Not Shown		5/8" Lock washer (for use with U-bolt)
Not Shown		5/8" NC Hex Nut (for use with U-bolt)

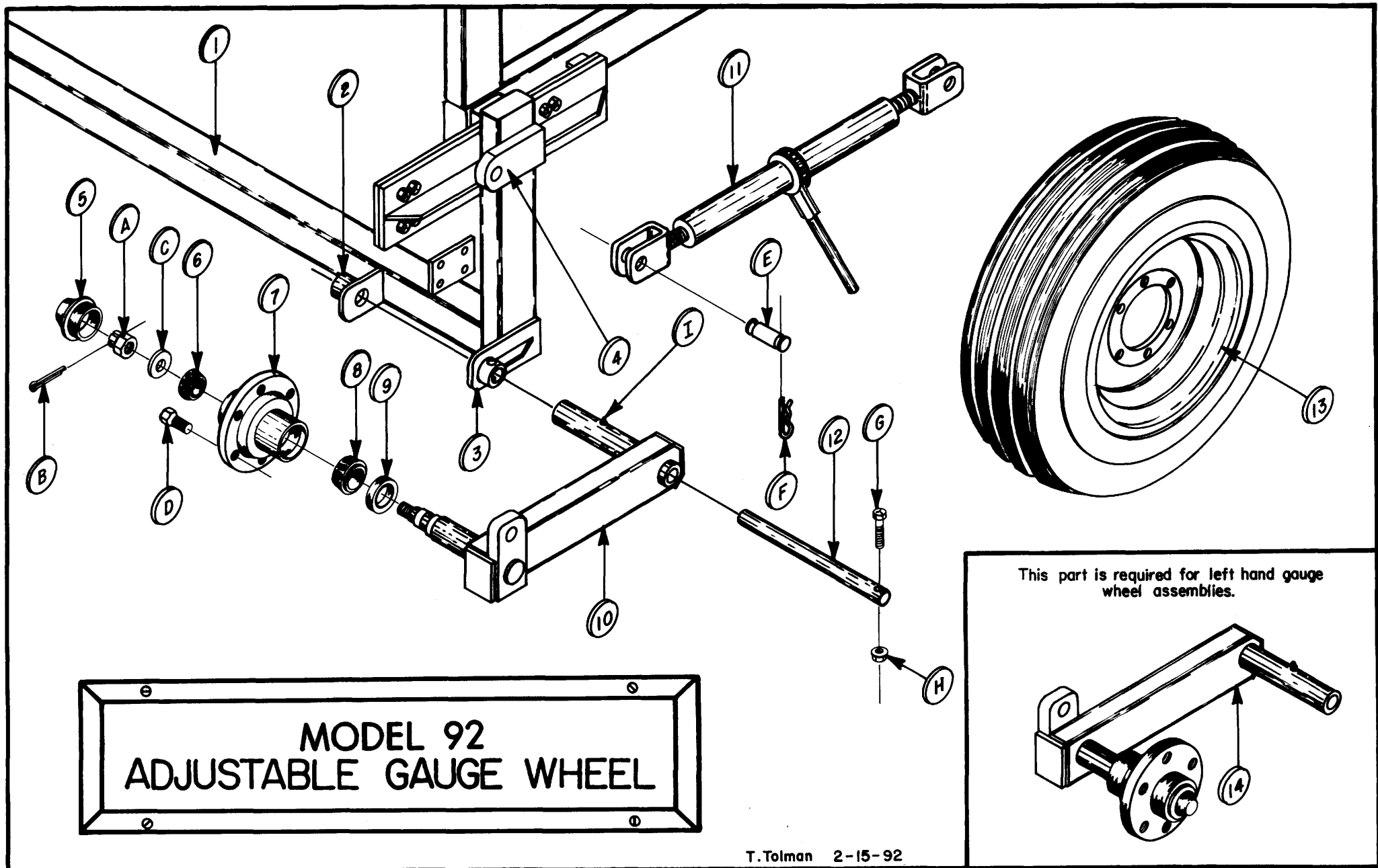
***Conversion Kits Available

<u>Kit No.</u>	<u>Description</u>
405021	Rear Gauge Wheel Conversion Kit—Converts Model's 1988–1991 to Model '92
405022	Rear Gauge Wheel Conversion Kit—Converts Model 1991 to Model '93
405020*	Small Wheel Conversion Kit—Converts from 123000 to 123018
900754	Center Dump Table Kit★
900755	Semi-End Table Kit★

* Used in conjunction with kit no. 405022 to convert models '91 to '93.

** This part is manufactured on a built-to-order basis only. Call Pickett Equipment for availability and lead time.

*** See the Service Update Section in the back of this parts book for detailed parts listings.



ADJUSTABLE GAUGE WHEEL (1992)

Parts List

<u>Item No.</u>	<u>Part No.</u>	<u>Description</u>
1.	900099-92	Main Frame Not Included
2.	900534	Inner Frame Pivot Mount
3.	900533	Outer Frame Pivot Mount
4.	900522	Main Frame Adjustment Mount
5.	103047	Cover, Dust Gauge Wheel Hub
6.	102036	Bearing, Gauge Wheel Hub 1¼"
7.	108057	Hub, Gauge
8.	102037	Bearing, Gauge Wheel Hub 1⅜"
9.	119066	Seal, Gauge Wheel Hub Grease
10.	900535	R.H. Pivot Arm } Replaced by 900743 & 901327 Spacer
Not Shown	900532	L.H. Pivot Arm } Replaced by 900744 & 901327 Spacer
11.	120003	Turnbuckle Gauge Wheel Ratchet Jack
12.	900527	Pivot Shaft
13.	123014	Tire Assembly—Includes:
13a.	120008	Tire, Gauge Wheel
13b.	123003	Wheel, Gauge
13c.	120007	Tube, Gauge Wheel 15"
14.	900169	L.H. Pivot Arm Assembly—Incl Hub } Replaced by 900055 & 901327
Not Shown	900175	R.H. Pivot Arm Assembly—Incl Hub } Replaced by 900056 & 901327
Not Shown	901165	Mud Scraper Plate—(Optional)
Not Shown	901166	Mud Scraper Mounting Plate
Not Shown	901170	Mud Scraper L.H. Mounting Arm
Not Shown	901171	Mud Scraper R.H. Mounting Arm

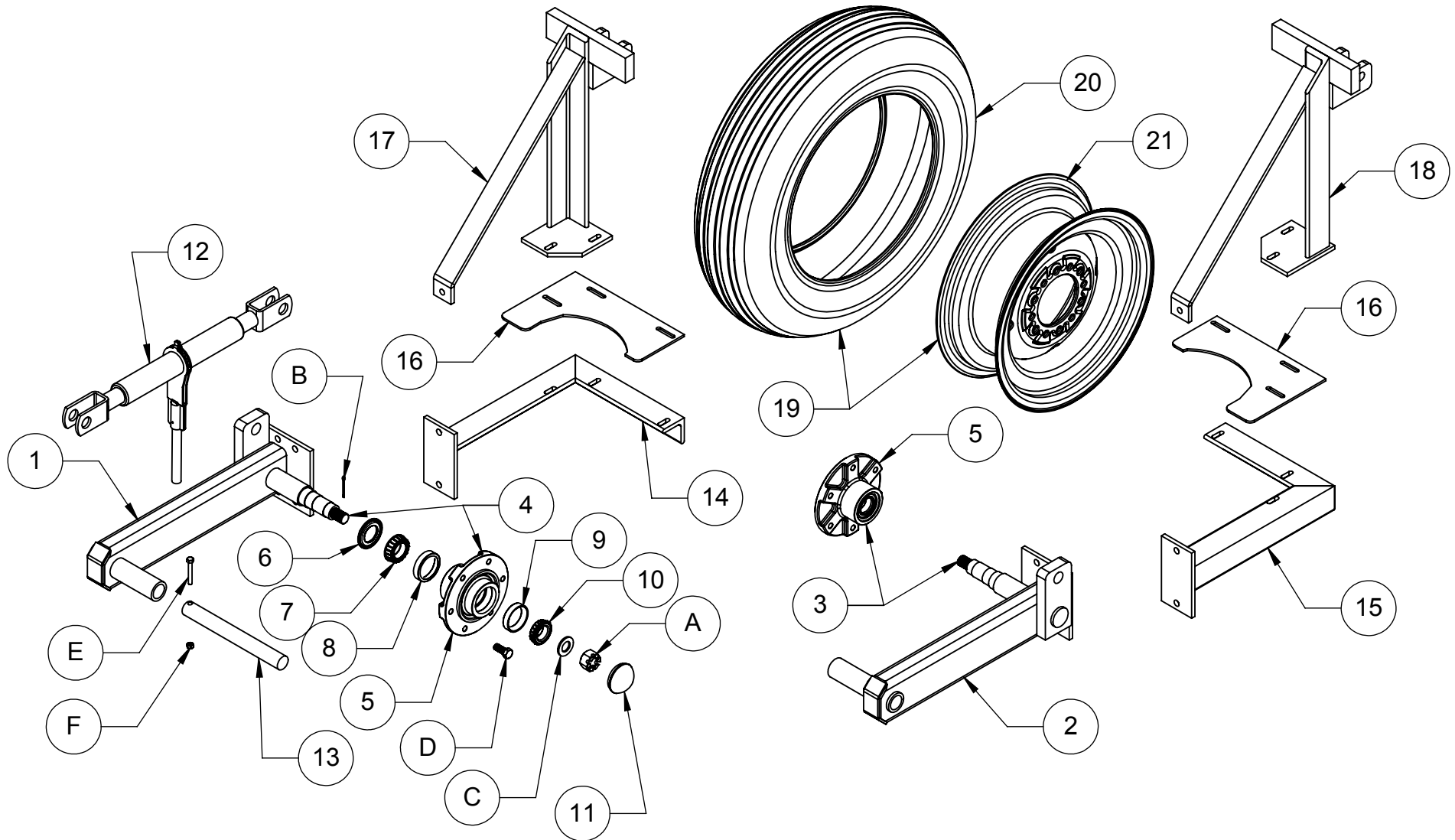
Hardware List

<u>Item No.</u>	<u>Part No.</u>	<u>Description</u>
A.		7/8" NF Castellated Hex Nut
B.		3/16" Cotter Pin
C.		7/8" Flat Washer
D.		½" x 1" NF Acorn-type Wheel Stud
E.		Turnbuckle Pin
F.	116009	Pin, Hair
G.		5/16" x 2 ¼" NC Hex Bolt
H.		5/16" NC Center Lock Nut
I.	126001	1/8" Grease Zerk

***Conversion Kits Available

<u>Kit No.</u>	<u>Description</u>
405023	Rear Gauge Wheel Conversion Kit (converts model '92 to '93)
900754	Center Dump Table Kit (converts model '92 to '93) (used in conjunction with kit # 405023)
900755	Semi-End Table Kit (converts model '92 to '93) (used in conjunction with kit # 405023)

Adjustable Rear Gauge Wheel



ADJUSTABLE REAR GAUGE WHEEL

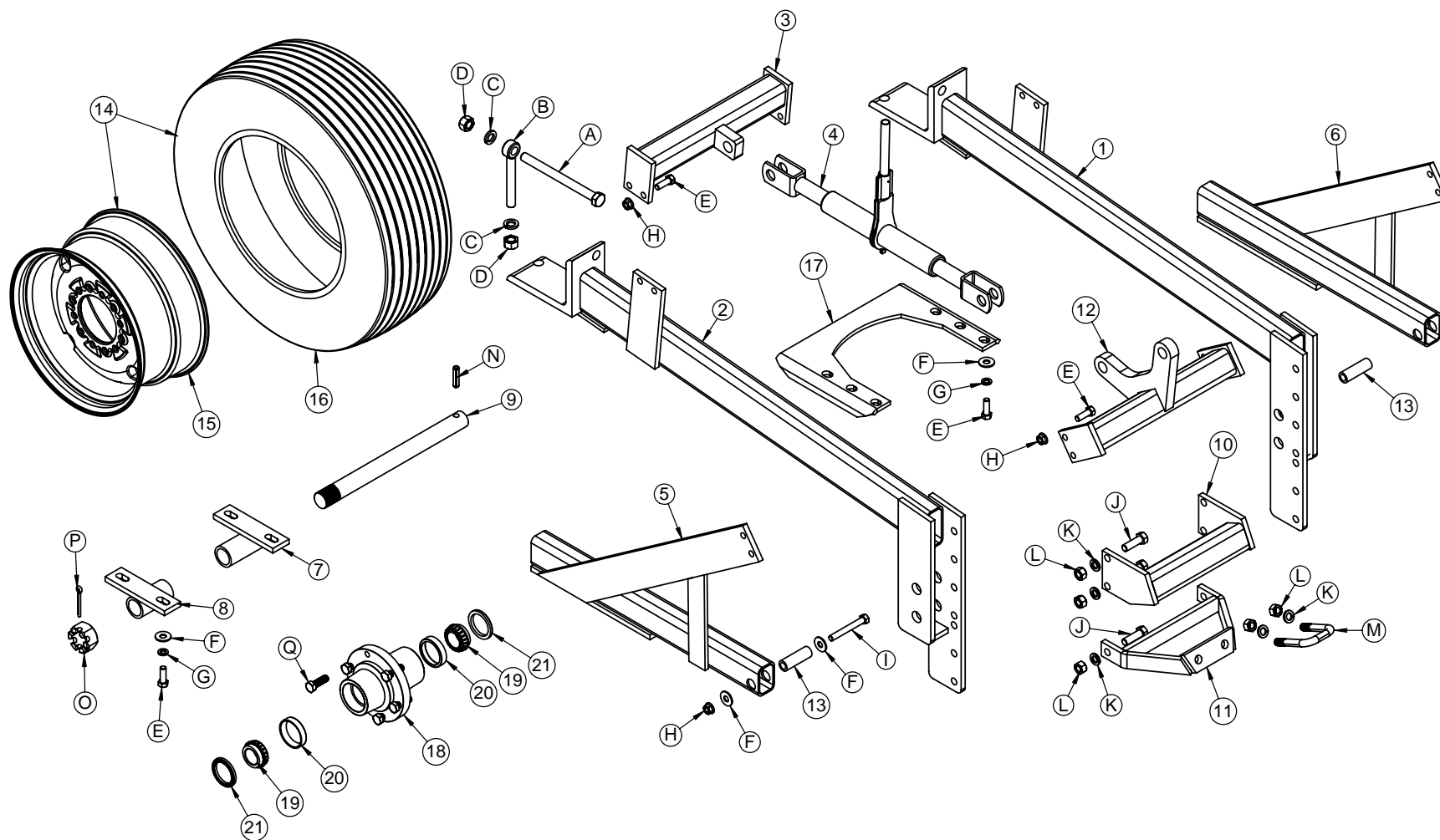
Parts List

<u>Item No.</u>	<u>Part No.</u>	<u>Qty</u>	<u>Description</u>
1.	900743	1	R.H. Pivot Arm
2.	900744	1	L.H. Pivot Arm
3.	900055	1	L.H. Pivot Arm Assembly—Includes Items 2 & 5
4.	900056	1	R.H. Pivot Arm Assembly—Includes Items 1 & 5
5.	108057	2	Hub, Gauge Wheel—Includes Items 6, 7, 8, 9, 10 & 11
6.	119066	2	Seal, Gauge Wheel Hub Grease
7.	102037	2	Bearing Cone, Gauge Wheel Hub 1 3/8"
8.	102136	2	Bearing Cup, Gauge Wheel Hub Inner
9.	102135	2	Bearing Cup, Gauge Wheel Hub Outer
10.	102036	2	Bearing Cone, Gauge Wheel Hub 1 1/4"
11.	103047	2	Cover, Gauge Wheel Hub Dust
12.	120003	2	Turnbuckle, Gauge Wheel Ratchet Jack
13.	900742	2	Pivot Shaft
14.	901171	1	Mud Scraper R.H. Mounting Arm
15.	901170	1	Mud Scraper L.H. Mounting Arm
16.	901165	2	Mud Scraper Plate
17.	901595	1	R.H. Mud Scraper Weight Mount Assembly—Optional
18.	901596	1	L.H. Mud Scraper Weight Mount Assembly—Optional
19.	123014	2	Tire Assembly—Includes Items 20 & 21
20.	120008	2	Tire, Gauge Wheel
21.	123003	2	Wheel, Gauge
22.	900865		4" Hub Extension—Optional—(Not Shown)

Hardware List

<u>Item No.</u>	<u>Part No.</u>	<u>Qty</u>	<u>Description</u>
A.		2	7/8" N.F. Castellated Hex Nut
B.		2	3/16" Cotter Pin
C.		2	7/8" Flat Washer
D.		12	1/2" x 1" N.F. Acorn-type Wheel Stud
E.		2	5/16" x 2 1/4" NC Hex Bolt
F.		2	5/16" NC Center Lock Nut

Universal Scissor Gauge Wheel



UNIVERSAL SCISSOR GAUGE WHEEL ASSEMBLY

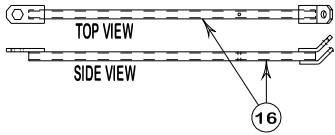
Parts List

<u>Item No.</u>	<u>Part No.</u>	<u>Qty</u>	<u>Description</u>
1.	905336	1	L.H. Pivot Arm
2.	905335	1	R.H. Pivot Arm
3.	905345	1	Rear Ram Mount
4.	120003	1	Ratchet Jack
5.	905340	1	R.H. Lower Pivot Arm
6.	905341	1	L.H. Lower Pivot Arm
7.	905260	1	Straddle Hub Lock Bushing
8.	905261	1	Straddle Hub Carrier Bushing
9.	905244	1	Straddle Hub Axle
10.	905255	1	Divider Mount
11.	905245	1	Divider Brace
12.	905349	1	Front Ram Mount
13.	905249	2	Lower Pivot Arm Bushing
14.	123015	1	27 x 9.50 –15 Tire Assembly (Includes Items 15 & 16)
15.	123020	1	Wheel, 15 x 8
16.	120012	1	Tire, 27 x 9.50 – 15
17.	905380	1	Mud Scraper
18.	108062	1	Straddle Hub (Includes Items 19, 20 & 21)
19.	102082	2	Bearing Cone, 1 1/2" Tapered Roller
20.	102137	2	Bearing Cup, Tapered Roller
21.	119123	2	Hub Seal
22.	905350-N	1 set	Complete Scissor Wheel (Includes 2 of all above listed items & hardware)
23.	103027		Hydraulic Cylinder (optional – used in hydraulic gauge wheel kits)
24.	405033		Depth Marker Assembly (optional – included with hydraulic kits.)
25.	905465		Depth Marker Arm (optional)
26.	905463		Depth Marker Guide (optional)

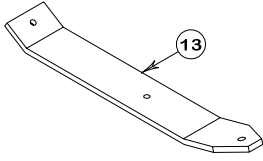
Hardware List

<u>Item No.</u>	<u>Part No.</u>	<u>Qty</u>	<u>Description</u>
A.	106009	2	3/4" x 9" NC Hex Bolt
B.	118000	2	3/4" x 6" NC Eye Bolt
C.		4	3/4" Lock Washer
D.		4	3/4" NC Hex Nut
E.		16	1/2" x 1 1/2" NC Hex Bolt
F.		12	1/2" Flat Washer
G.		8	1/2" Lock Washer
H.		10	1/2" NC Whiz Nuts
I.		2	1/2" x 4" NC Hex Bolt
J.		6	5/8" x 2" NC Hex Bolt
K.		8	5/8" Lock Washer
L.		8	5/8" NC Hex Nut
M.	121004	1	Type E, U-Bolt
N.		1	1/2" x 2" Roll Pin
O.		1	1 1/2" NF Slotted Hex Nut
P.		1	1/4" x 2 1/2" Cotter Key
Q.		6	9/16" x 1 1/2" Wheel Bolt
R.	121016	1	Type N, U-Bolt
S.		2	3/8" NC Whiz Nuts

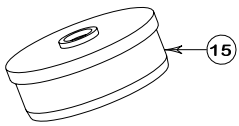
PICKUP HEAD/DIVIDER POINT TOOL



DIVIDER SHOE



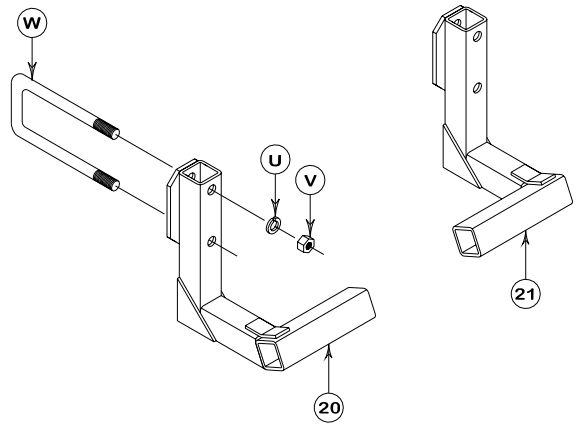
ROLLER END CAP



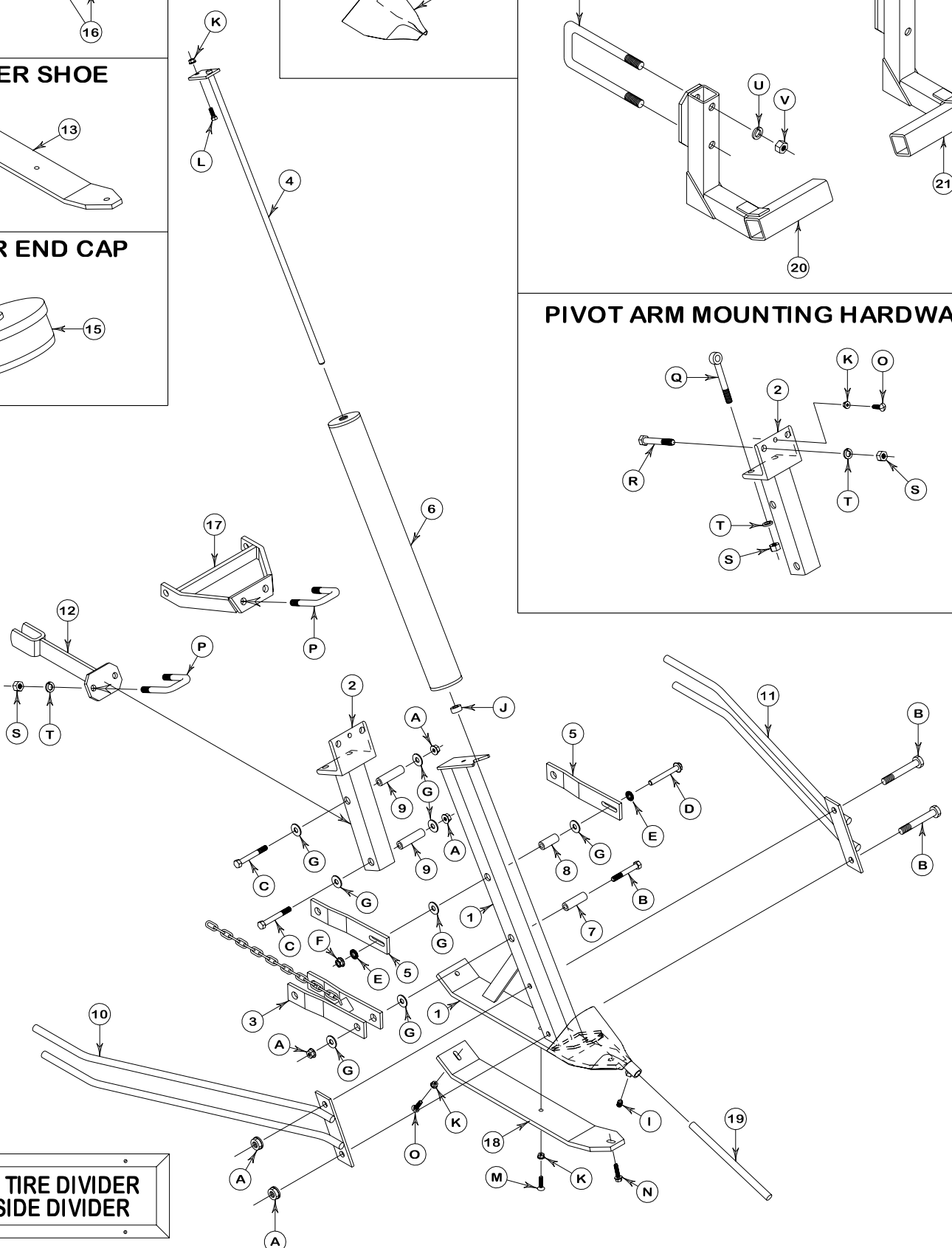
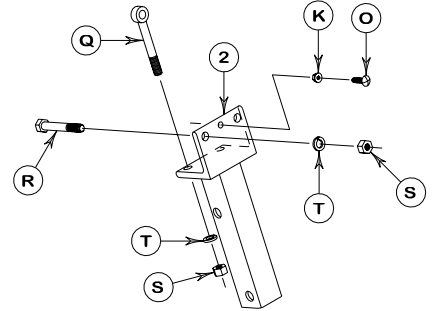
NOSE CONE



OUTSIDE MOUNTING BRACKETS



PIVOT ARM MOUNTING HARDWARE



**FRONT TIRE DIVIDER
/ OUTSIDE DIVIDER**

FRONT TIRE DIVIDER ASSEMBLY

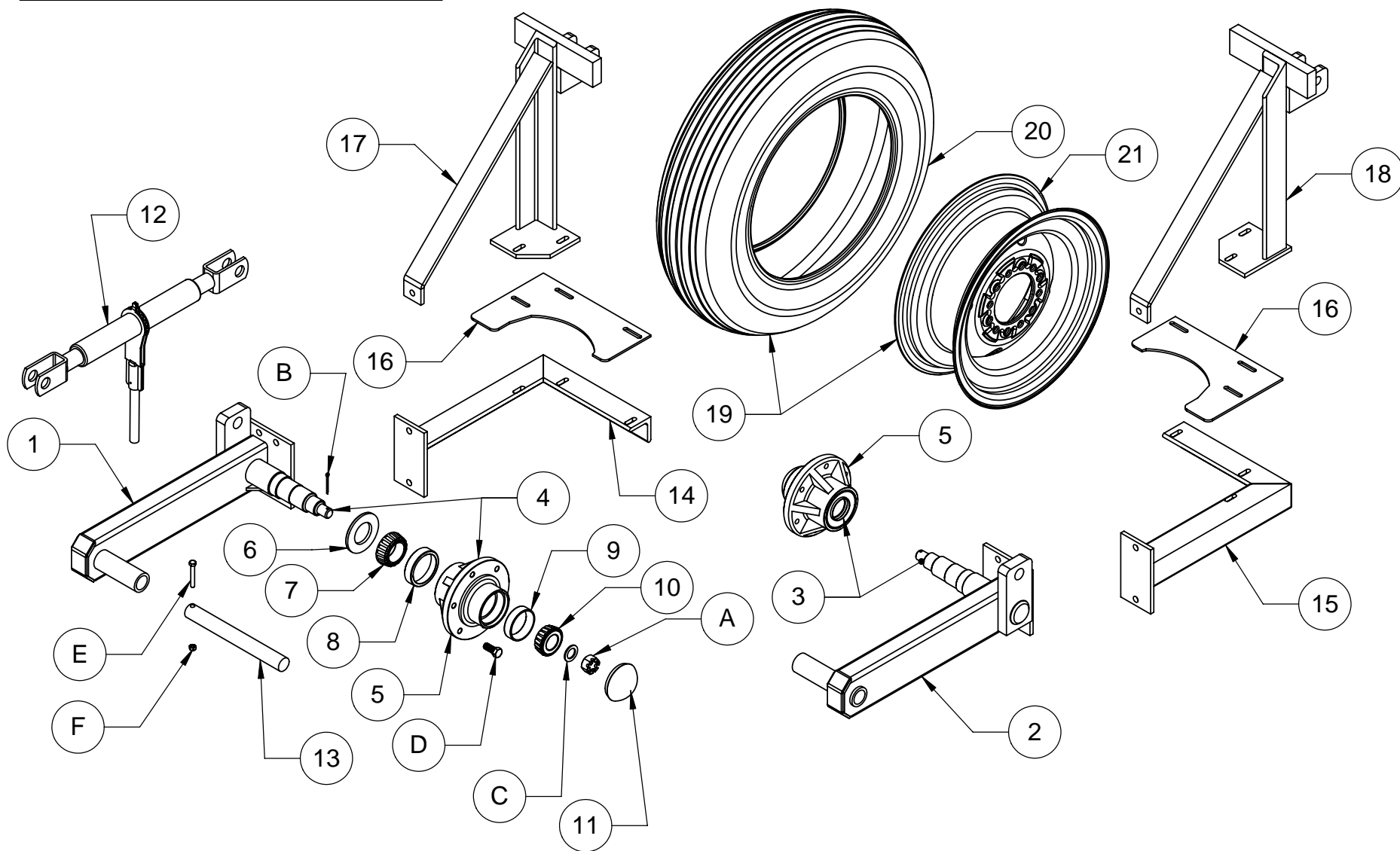
Parts List

<u>Item No.</u>	<u>Part No.</u>	<u>Description</u>
1.	300020-97	Main Frame
2.	300085	Pivot Arm Mount—See Hardware Items: Q, R, S & T
3.	300013	Lower Pivot Arm (Includes bushings Items: 7 & 9)
4.	300056	Divider Pin
5.	300014	Upper Pivot Arm (Includes bushings Items: 8 & 9)
6.	300006	Divider Roller
7.	300057	Lower Front Bushing—2.8125" long
8.	300058	Upper Front Bushing—2.125" long
9.	300059	Pivot Arm Bushing—3.3125" long
10.	300033	R.H. Divider Rod, short
10a.	300067	R.H. Divider Rod, long (Not Shown)
11.	300034	L.H. Divider Rod, short
11a.	300066	L.H. Divider Rod, long (Not Shown)
12.	900506	Divider Brace (Std Shank)
13.	300005	Divider Shoe (weld on replacement)
14.	300021	Nose Cone (weld on replacement)
15.	118001	Roller End Cap
16.	901475	Divider Point Adjustment Tool
17.	905245	Divider Brace (Scissor Gauge Wheel)
18.	300095	Divider Wear Shoe (UHMW)
19.	300024	Divider Point
20.	200289	R.H. Outside Mounting Bracket (Std Shank)
20a.	200300	R.H. Outside Mounting Bracket (C-Shank) (not shown)
21.	200288	L.H. Outside Mounting Bracket (Std Shank)
21a.	200301	L.H. Outside Mounting Bracket (C-Shank) (not shown)
	300018	Front Tire Divider—Complete without Rods

Hardware List

<u>Item No.</u>	<u>Part No.</u>	<u>Description</u>
A.		1/2" NC Whiz Nut
B.		1/2" x 3 1/2" NC Hex Bolt
C.		1/2" x 4" NC Hex Bolt
D.		1/2" x 4" NC Hex Flange Bolt
E.		1/2" Disc Lock Washer
F.		1/2" NC Hex Flange Lock Nut
G.		1/2" Flat Washer
H.	106058	Bolt Kit, Divider Upper Front Bolt (Includes: 1) D, 2) E, 1) F & 2) G
I.		1/2" x 3/4" NC Set Screw (square head)
J.	103042	Collar, 5/8" Lock
K.		3/8" NC Whiz Nut
L.		3/8" x 1" NC Hex Bolt
M.		3/8" x 1 1/2" NC Flat Head Bolt
N.		3/8" x 1 1/2" NC Whiz Head Bolt
O.		3/8" x 1 1/2" NC Carriage Bolt
P.	121004	U-Bolt, Type E 5/8" x 2 9/16" x 4"
Q.	118026	5/8" x 4 1/2" NC Eye Bolt
R.		5/8" x 4 1/2" NC Hex Bolt
S.		5/8" NC Hex Nut
T.		5/8" Lock Washer
U.		3/4" Lock Washer
V.		3/4" NC Hex Nut
W.	121001	U-Bolt, Type B 3/4" x 4" x 10 1/2"

12 Row 30 Rear Gauge Wheel



ADJUSTABLE REAR GAUGE WHEEL, 12 ROW 30

Parts List

<u>Item No.</u>	<u>Part No.</u>	<u>Qty</u>	<u>Description</u>
1.	901752	2	R.H. Pivot Arm
2.	901753	1	L.H. Pivot Arm
3.	901751	1	L.H. Pivot Arm Assembly—Includes Items 2 & 5
4.	901750	2	R.H. Pivot Arm Assembly—Includes Items 1 & 5
5.	108259	3	Hub, Gauge Wheel—Includes Items 6, 7, 8, 9, 10 & 11
6.	119260	3	Seal, Gauge Wheel Hub Grease
7.	102128	3	Bearing Cone, Gauge Wheel Hub Inner
8.	102191	3	Bearing Cup, Gauge Wheel Hub Inner
9.	102193	3	Bearing Cup, Gauge Wheel Hub Outer
10.	102192	3	Bearing Cone, Gauge Wheel Hub Outer
11.	103160	3	Cover, Gauge Wheel Hub Dust
12.	120003	3	Turnbuckle, Gauge Wheel Ratchet Jack
13.	900742	3	Pivot Shaft
14.	901171	2	Mud Scraper R.H. Mounting Arm
15.	901170	1	Mud Scraper L.H. Mounting Arm
16.	901165	3	Mud Scraper Plate
17.	901595	2	R.H. Mud Scraper Weight Mount Assembly—Optional
18.	901596	1	L.H. Mud Scraper Weight Mount Assembly—Optional
19.	123014	3	Tire Assembly—Includes Items 20 & 21
20.	120008	3	Tire, Gauge Wheel
21.	123003	3	Wheel, Gauge

Hardware List

<u>Item No.</u>	<u>Part No.</u>	<u>Qty</u>	<u>Description</u>
A.		3	7/8" N.F. Castellated Hex Nut
B.		3	3/16" Cotter Pin
C.		3	7/8" Flat Washer
D.		18	1/2" x 1" N.F. Acorn-type Wheel Stud
E.		3	5/16" x 2 1/4" NC Hex Bolt
F.		3	5/16" NC Center Lock Nut