

# Service Updates

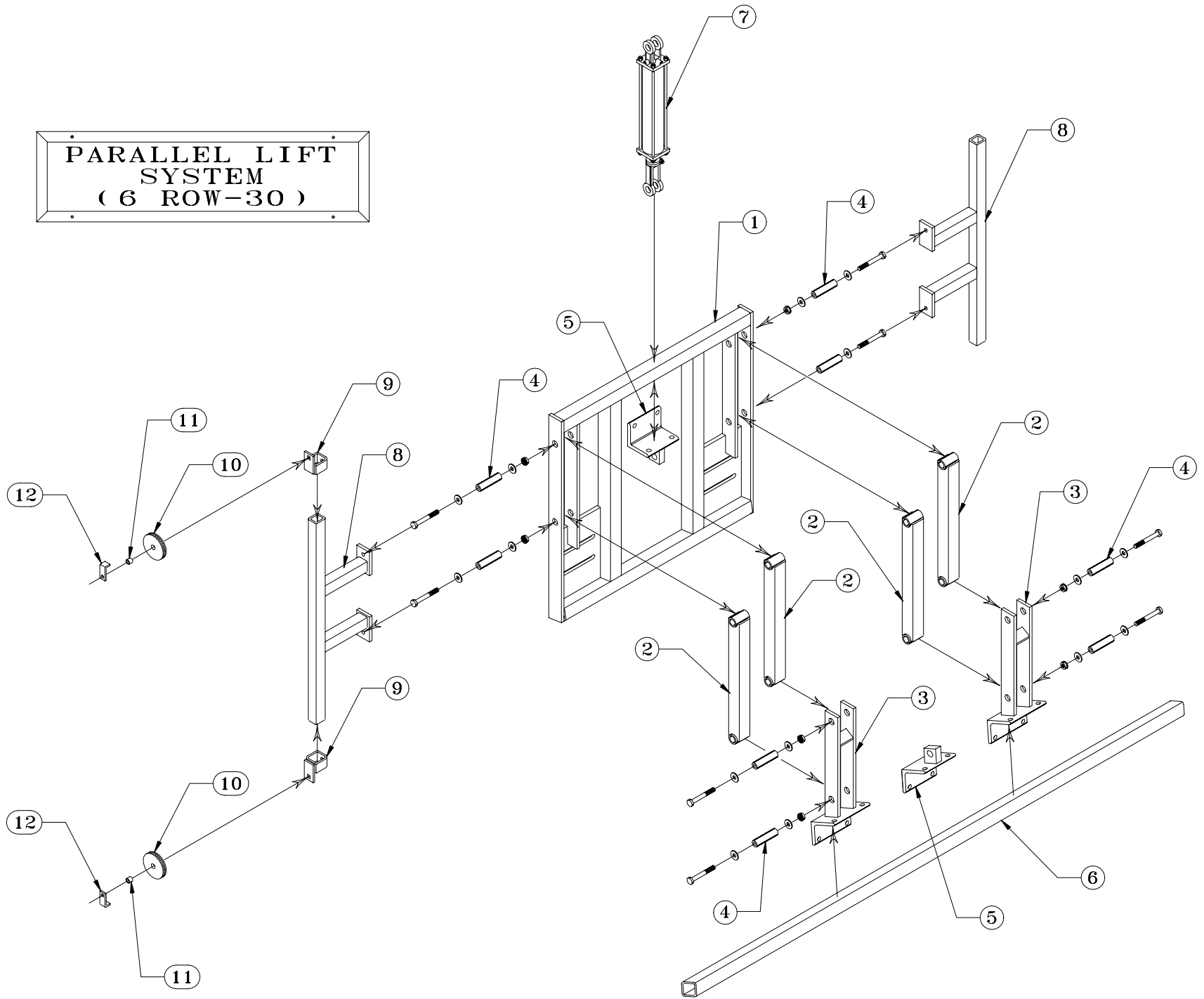
## Divider System Conversion Kits

## Section 4

Standard Divider System to Parallel Lift System 6 Row 30 .....	2-3
Standard Divider System to Parallel Lift System 8 Row 22 .....	4-5

Return to this page by clicking the upper right corner of any page in this section.

PARALLEL LIFT  
SYSTEM  
( 6 ROW-30 )



# STANDARD DIVIDER SYSTEM TO PARALLEL LIFT SYSTEM

## 6 Row 30" (405015)

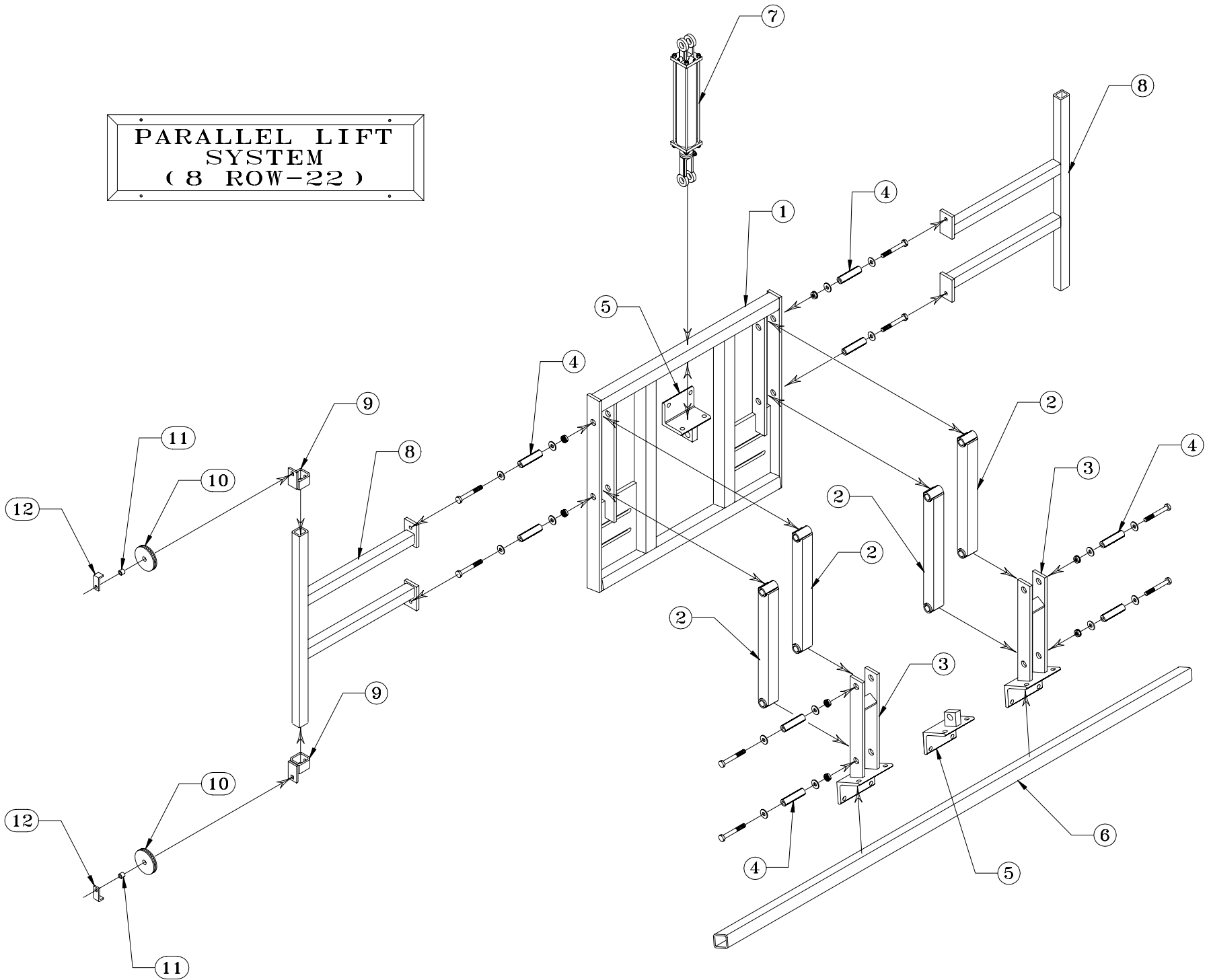
### Parts List

<u>Item No.</u>	<u>Part No.</u>	<u>Qty</u>	<u>Description</u>
1.	200075	1	Front Mounting Base
2.	200085	4	Pivot Arm
3.	200080	2	Lifting Arm (See Hardware Items: A, B, C, D, G, H, I)
4.	200072	8	Lifting Arm Bushing
5.	200090	2	Upper & Lower Ram Mount (Center Mounted for 2 Divider Systems)
6.	200229	1	Divider Tube 6-30, (75")
7.	103083	1	Hydraulic Ram (2½" x 12")
8.	200130	2	Front Assist Arm 6-30, (See Hardware Items: E, G, I)
9.	200100	4	Pulley Slide Lock (See Hardware Items: F, G, I, J, K)
10.	116010	4	Steel Pulley
11.	200276	4	Pulley Bushing
12.	200267	4	Pulley Guard
13.	200121	2	Divider Tube Cable Plate (Not Shown)

### Parts List

<u>Item No.</u>	<u>Part No.</u>	<u>Qty</u>	<u>Description</u>
A.	118026	8	5/8" x 4½" NC Eye Bolt
B.		8	5/8" x 4½" NC Hex Bolt, Grade 8
C.		16	5/8" NC Hex Nut
D.		16	5/8" Lock Washer
E.		4	½" x 5" NC Hex Bolt, Grade 5
F.		4	½" x 2" NC Carriage Bolt, Grade 5
G.		12	½" NC Whiz Nut
H.		4	½" x 4½" NC Hex Bolt
I.		16	½" Flat Washer
J.		4	½" x 1½" NC Hex Bolt
K.		8	½" NC Hex Nut
L.	121016	2	U-Bolt (Type N) 3/8" x 29/16" x 3/4" (Use on Item 13)
M.		4	3/8" NC Whiz Nuts (Use on Item 13)
N.	103043	2	¼" Steel Cable (13' Pulley Systems)

PARALLEL LIFT  
SYSTEM  
( 8 ROW-22 )



# STANDARD DIVIDER SYSTEM TO PARALLEL LIFT SYSTEM

## 8 Row 22" (405016)

### Parts List

<u>Item No.</u>	<u>Part No.</u>	<u>Qty</u>	<u>Description</u>
1.	200075	1	Front Mounting Base
2.	200085	4	Pivot Arm
3.	200080	2	Lifting Arm (See Hardware Items: A, B, C, D, G, H, I)
4.	200072	8	Lifting Arm Bushing
5.	200090	2	Upper & Lower Ram Mount (Center Mounted for 2 Div. Syst) ★ See Note
5a.	200104	2	Upper & Lower Ram Mount (Offset Mounted for 3 Div. Syst.) ★ See Note
6.	200224	1	Divider Tube 8-22, (96")
7.	103083	1	Hydraulic Ram (2½" × 12")
8.	200130	2	Front Assist Arm 8-22, (See Hardware Items: E, G, I)
9.	200100	4	Pulley Slide Lock (See Hardware Items: F, G, I, J, K)
10.	116010	4	Steel Pulley
11.	200276	4	Pulley Bushing
12.	200267	4	Pulley Guard
13.	200121	2	Divider Tube Cable Plate (Not Shown)

### Parts List

<u>Item No.</u>	<u>Part No.</u>	<u>Qty</u>	<u>Description</u>
A.	118026	8	5/8" × 4½" NC Eye Bolt
B.		8	5/8" × 4½" NC Hex Bolt, Grade 8
C.		16	5/8" NC Hex Nut
D.		16	5/8" Lock Washer
E.		4	½" × 5" NC Hex Bolt, Grade 5
F.		4	½" × 2" NC Carriage Bolt, Grade 5
G.		12	½" NC Whiz Nut
H.		4	½" × 4½" NC Hex Bolt
I.		16	½" Flat Washer
J.		4	½" × 1½" NC Hex Bolt
K.		8	½" NC Hex Nut
L.	121016	2	U-Bolt (Type N) 3/8" x 2 <sup>9</sup> / <sub>16</sub> " × 3/4" (Use on Item 13)
M.		4	3/8" NC Whiz Nuts (Use on Item 13)
N.	103043	2	¼" Steel Cable (13' Pulley Systems)

★ When ordering specify the number of front tire dividers you have on the front of your tractor. This determines whether you will need item number 5 or 5a.