

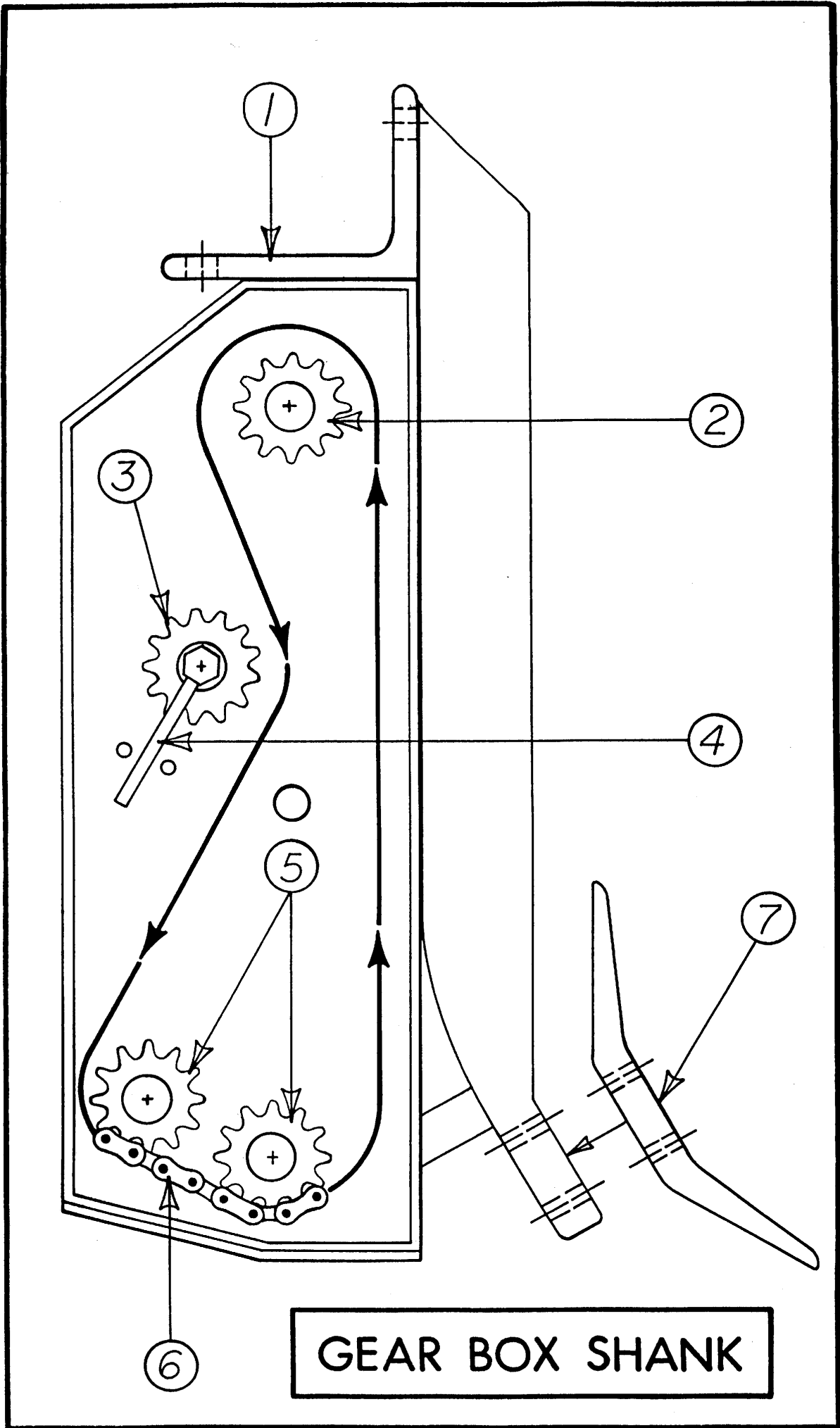
# One Step Rod Cutter Rear Pull

## Chain Case

## Section 1

Model Years 1988 – 1990 (PTO Drive Chain Case) .....	2-3
Model Year 1991 (PTO Drive Chain Case) .....	4-5
Model Years 1992 – 1994 (PTO Drive Chain Case) .....	6-7
Model Years 1995 – Present (PTO Drive Chain Case) .....	8-9
Model Years 1995 – Present (Hydraulic Drive Chain Case) .....	10-11

Return to this page by clicking the upper right corner of any page in this section.



**GEAR BOX SHANK**

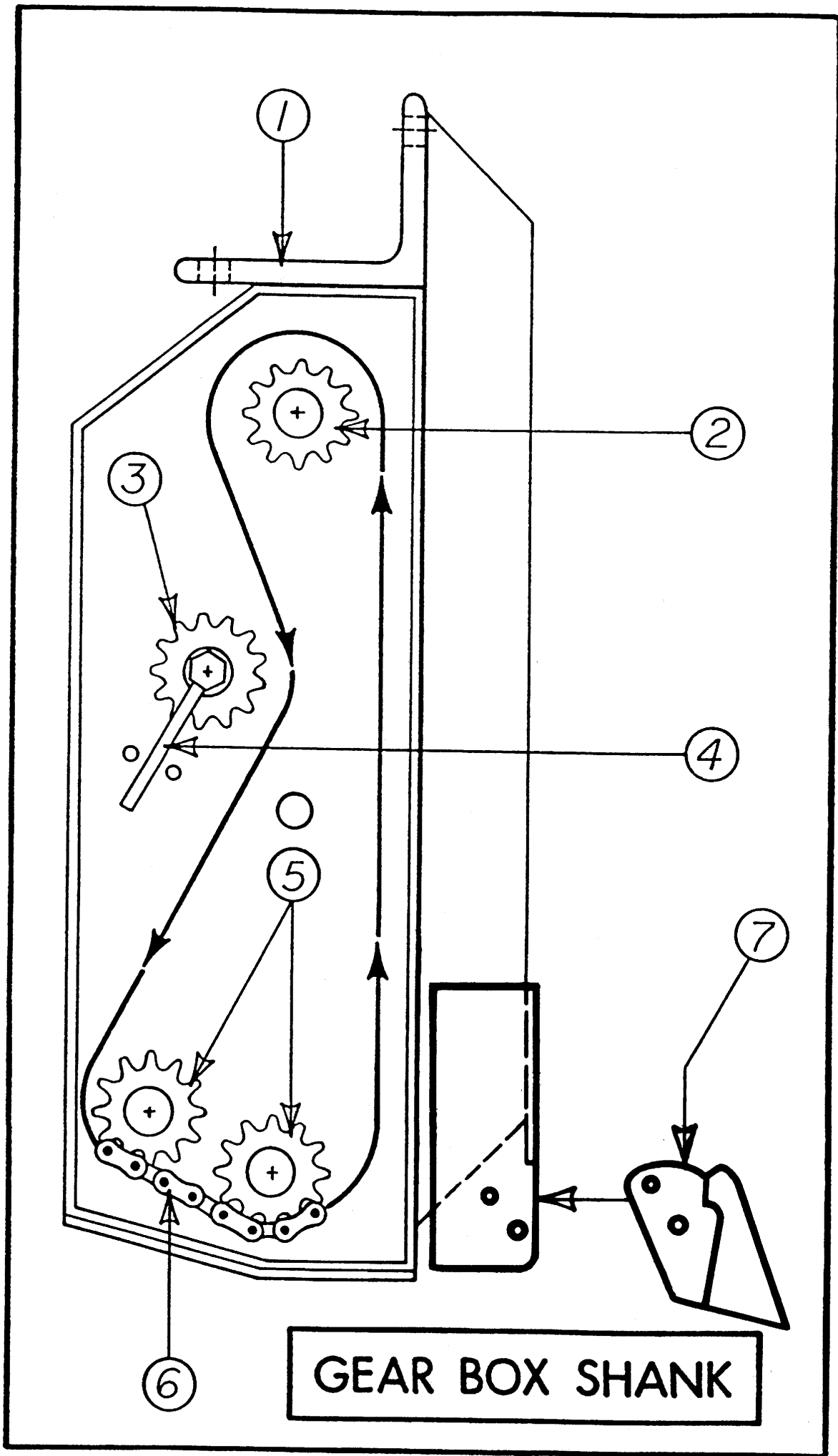
## CHAIN CASE PARTS CONVERSION LIST (1988–1990)

### Parts List

<u>Item No.</u>	<u>Obsolete No.</u>	<u>Order No.</u>	<u>Description</u>
1.	900023-B	900023-B★	Chain Case 1988, 89,90
2.	SP60JA12 SBJA1	119014	Sprocket, B-style Not used with B-style sprocket
3.	SP60BS13	119017	Idler Sprocket
4.	900033	900033	Idler Bolt Stop
5.	SP60JA12 SBJA1	119014	Sprocket, B-style Not used with B-style sprocket
6.	CO6036	103013	Chain, 60 H Roller
7.	BS9055	116008	Point Shank, Pre '91
Not Shown	P3Y216E3	102016	Bearing, 2-Hole Flange Triple Seal (3 required)
Not Shown★★	900211	900211	Stub Shaft (includes 1/4" x 1 1/4" Key)
Not Shown★★	900373	900373	Cutter Rod Coupler

★ This part is manufactured on a built-to-order basis only. Call Pickett Equipment for part availability and lead time.

★★ This part is used on model years 1988-90, only when a full length of cutter rod is not used.



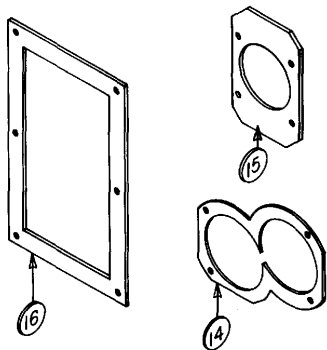
## CHAIN CASE PARTS CONVERSION LIST (1991)

### Parts List

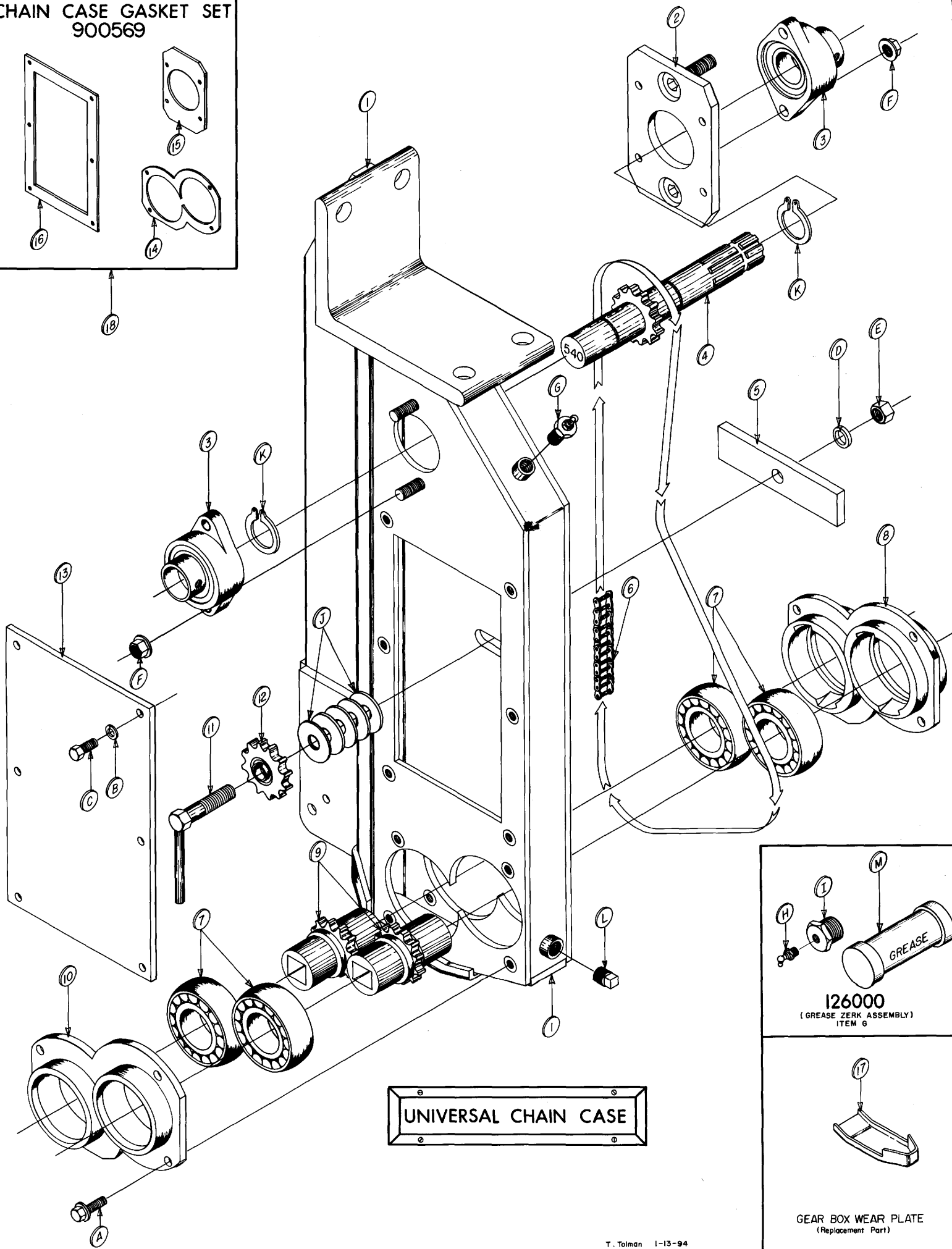
<u>Item No.</u>	<u>Obsolete No.</u>	<u>Order No.</u>	<u>Description</u>
1.	900403	900403★	Chain Case 1991
2.	SP60JA12	119014	Sprocket, B-style
	SBJA1		Not used with B-style sprocket
3.	SP60BS13	119017	Idler Sprocket
4.	900033	900033	Idler Bolt Stop
5.	SP60JA12	119014	Sprocket, B-style
	SBJA1		Not used with B-style sprocket
6.	CO6036	103013	Chain, 60 H Roller
7.	900372	116006	Point, Shear
Not Shown	116007	116023	Point, V-Bottom Rock
Not Shown	P37216E3	102016	Bearing, 2-Hole Triple Seal (3 required)
Not Shown	900211	900211	Stub Shaft (includes 1/4" x 1 1/4" Key)
Not Shown	900373	900373	Cutter Rod Coupler

★ This part is manufactured on a built-to-order basis only. Call Pickett Equipment for availability and lead time.

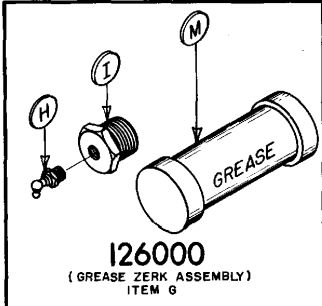
CHAIN CASE GASKET SET  
900569



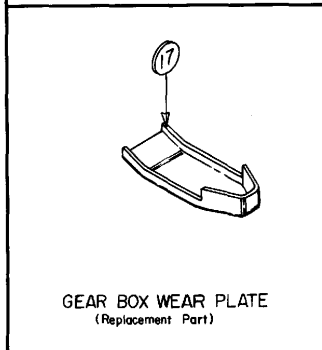
18



UNIVERSAL CHAIN CASE



126000  
(GREASE ZERK ASSEMBLY)  
ITEM 6



GEAR BOX WEAR PLATE  
(Replacement Part)

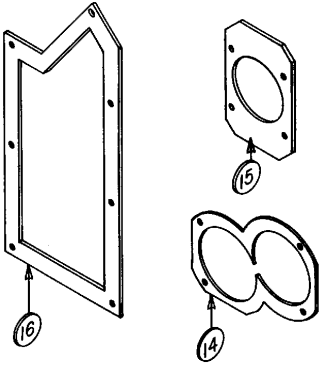
**UNIVERSAL CHAIN CASE—PART # 900565 (1992–1994)****Parts List**

<u>Item No.</u>	<u>Part No.</u>	<u>Description</u>
1.	900549	Chain Case Shank Assembly
2.	900515	Input Shaft Bearing Mount
3.	102049	Bearing, Upper Chain Case
4.	119084	Shaft, IP 13T x 1 <sup>3</sup> / <sub>8</sub> " 6-Spline 540 RPM (replaced by 119084-97) 12-Tooth
Not Shown	119085	Shaft, IP 10T x 1 <sup>3</sup> / <sub>8</sub> " 6-Spline 1000 RPM
5.	900170	Idler Sprocket Guide
6.	103013	Chain, 60 Roller
7.	102032	Bearing, Chain Case Lower Shaft
8.	900542	R.H. Bearing Sleeve Cap Assembly– (Inside)
9.	900557	Output Sprocket Shaft Assembly
10.	900541	L.H. Bearing Sleeve Cap Assembly– (Outside)
11.	900033	Idler Sprocket Bolt Stop
12.	119017	Sprocket, Idler 06013E10
13.	900519	Inspection Cover
14.	900566	Bearing Sleeve-Cap Gasket
15.	900567	Input Shaft Plate Gasket
16.	900568	Inspection Cover Gasket
17.	119065	Weld-on wear plate (replaced by 119116)
18.	901221	Complete Chain Case Gasket Set
Not Shown	901242	Includes: (2) 900566, (1) 900567, (1) 900568, (1) 901188 (95-Present) Shoe Update Kit—converts from weld-on shoe to bolt-on shoe See Service Update Section for diagram and parts listing

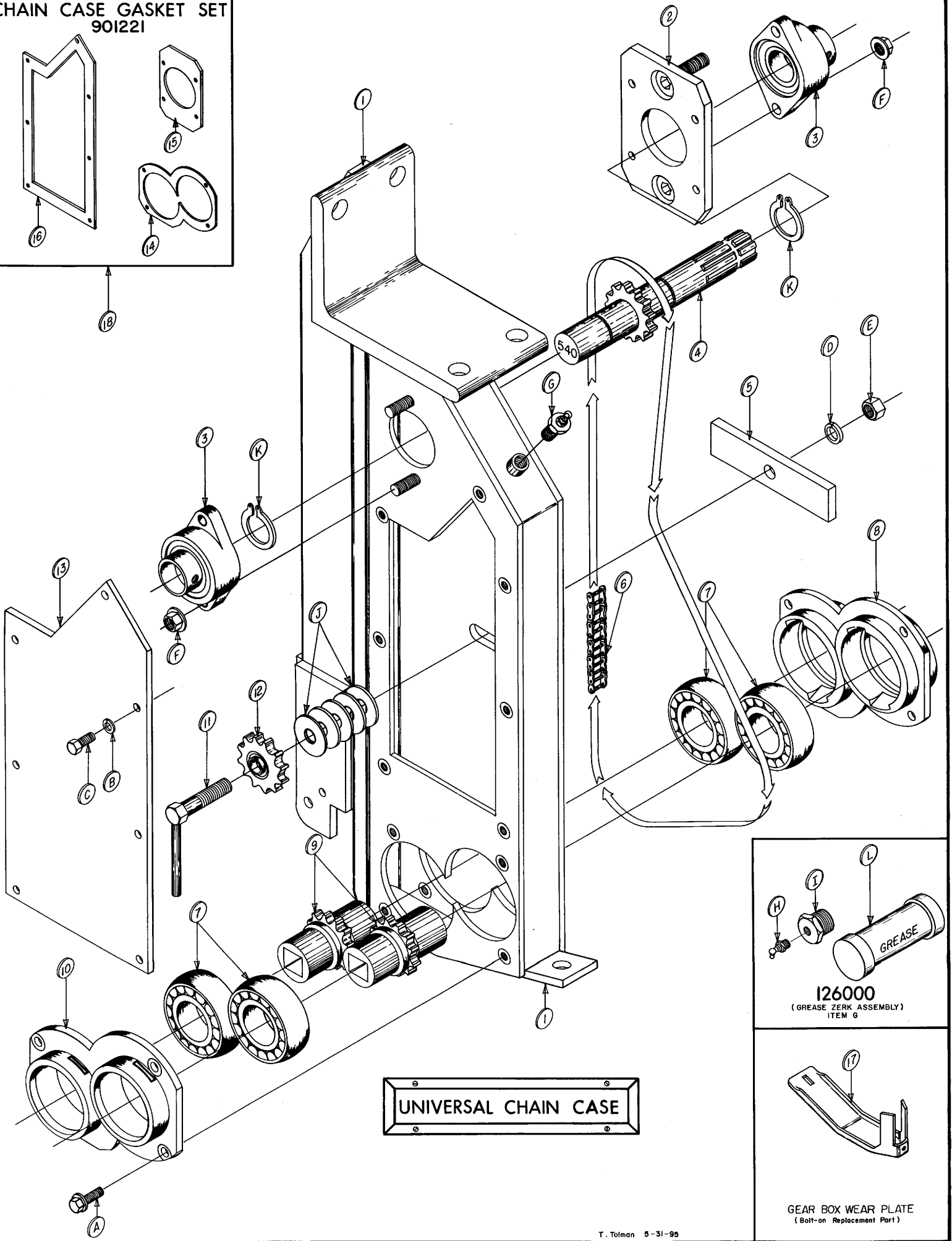
**Hardware**

<u>Item No.</u>	<u>Part No.</u>	<u>Description</u>
A.	102073	3/8" x 3/4" NC Hex Whiz Bolt—Grade 8
B.		3/8" Lock Washer
C.		3/8" x 3/4" NC Hex Bolt
D.		5/8" Lock Washer
E.		5/8" NC Hex Nut
F.		5/8" NC Whiz Nut
G.	126000	Grease Zerk Assembly
H.	126001	1/8" Grease Zerk
I.		Reducer Bushing
J.		5/8" SAE Flat Spacer Washer (5 required)
K.	118018	Snap Ring
L.	107009	Corn Head Grease

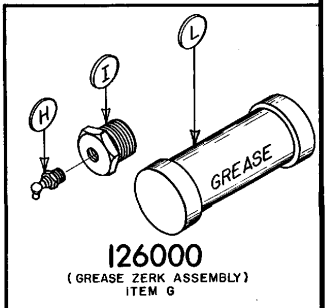
CHAIN CASE GASKET SET  
901221



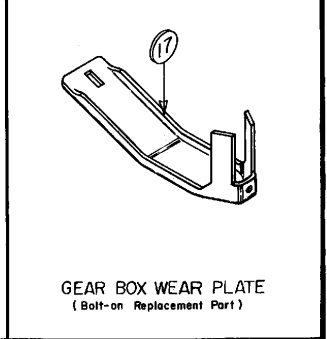
18



UNIVERSAL CHAIN CASE



126000  
(GREASE ZERK ASSEMBLY)  
ITEM 6



GEAR BOX WEAR PLATE  
(Bolt-on Replacement Part)



## UNIVERSAL CHAIN CASE—PART # 900565 (1995–Present)

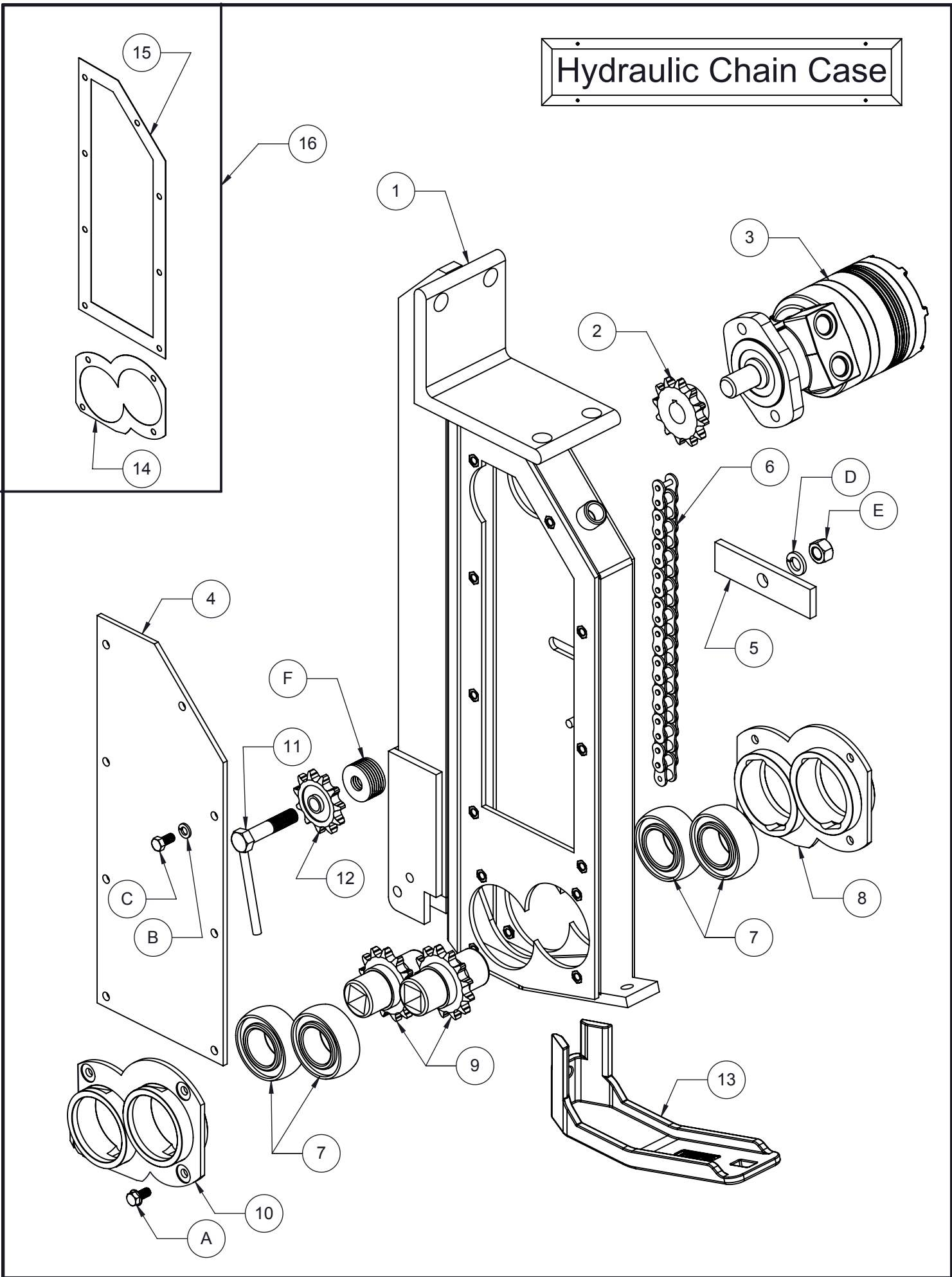
### Parts List

<u>Item No.</u>	<u>Part No.</u>	<u>Description</u>
1.	900549	Chain Case Shank Assembly
2.	900515	Input Shaft Bearing Mount
3.	102049	Bearing, Upper Chain Case
4.	119084-97	Shaft, IP 12T × 1 <sup>3</sup> / <sub>8</sub> " 6-Spline 540 RPM (replaces 119084, 13T, obsolete)
5.	900170	Idler Sprocket Guide
6.	103013	Chain, 60 Roller, 74 Pitches
7.	102032	Bearing, Chain Case Lower Shaft
8.	900542	R.H. Bearing Sleeve Cap Assembly (Inside)
9.	900557	Output Sprocket Shaft Assembly
10.	900541	L.H. Bearing Sleeve Cap Assembly (Outside)
11.	900033	Idler Sprocket Bolt Stop
12.	119016	Sprocket, Idler (SP60BS11) (eliminates ½ link on the 60 chain)
13.	901181	Inspection Cover
14.	900566	Bearing Sleeve-Cap Gasket
15.	900567	Input Shaft Plate Gasket
16.	901188	Inspection Cover Gasket
17.	119116	Shoe, Wear Plate Chain Case, Bolt-on
18.	901221	Complete Chain Case Gasket Set Includes: (2) 900566, (1) 900567, (1) 901188, (1) 900568 (pre '95 only)

### Hardware

<u>Item</u>	<u>Part No.</u>	<u>Description</u>
A.	102073	3/8" × 3/4" NC Hex Whiz Bolt—Grade 8
B.		3/8" Lock Washer
C.		3/8" × 3/4" NC Hex Bolt
D.		5/8" Lock Washer
E.		5/8" NC Hex Nut
F.		5/8" NC Whiz Nut
G.	126000	Grease Zerk Assembly
H.	126001	1/8" Grease Zerk
I.		Reducer Bushing
J.		5/8" SAE Flat Spacer Washer (5 required)
K.	118018	Snap Ring
L.	107009	Corn Head Grease

# Hydraulic Chain Case



## HYDRAULIC DRIVE CHAIN CASE (1995 – Present)

### Parts List

<u>Item No.</u>	<u>Part No.</u>	<u>Description</u>
1.	905085-95	Hydraulic Chain Case (Weld Assembly)
2.	119014	Input Drive Sprocket (12-Tooth)
3.	113030	Hydraulic Motor
3a.	119110	Seal Kit for Item 3
4.	905274	Inspection Cover
5.	900170	Idler Sprocket Guide
6.	103013	Chain, 60 Roller
7.	102032	Bearing, Chain Case Lower Shaft
8.	900542	R.H. Bearing Sleeve Cap Assembly (Outside)
9.	900557	Output Sprocket Shaft Assembly
10.	900541	L.H. Bearing Sleeve Cap Assembly (Inside)
11.	900033	Idler Sprocket Bolt Stop
12.	119016	Sprocket, Idler (6011E10) (Eliminates the ½ link on the 60 chain)
13.	119116	Shoe, Bolt-on Wear Plate
14.	900566	Bearing Sleeve Cap Gasket
15.	905271	Inspection Cover Gasket
16.	905277	Chain Case Gasket Set—Includes: (2) 900566, (1) 905271 (1) 900568
Not Shown	905090-95	Complete Hydraulic Chain Case Assembly

### Hardware List

<u>Item No.</u>	<u>Part No.</u>	<u>Description</u>
A.	102073	3/8" x 3/4" NC Whiz Bolt—Grade 8
B.		3/8" Lock washer
C.		3/8" x 3/4" NC Hex Bolt
D.		5/8" Lock washer
E.		5/8" NC Hex Nut
F.		5/8" SAE Flat Spacer Washer—5 Required
Not Shown	107009	Corn Head Grease—Tube