

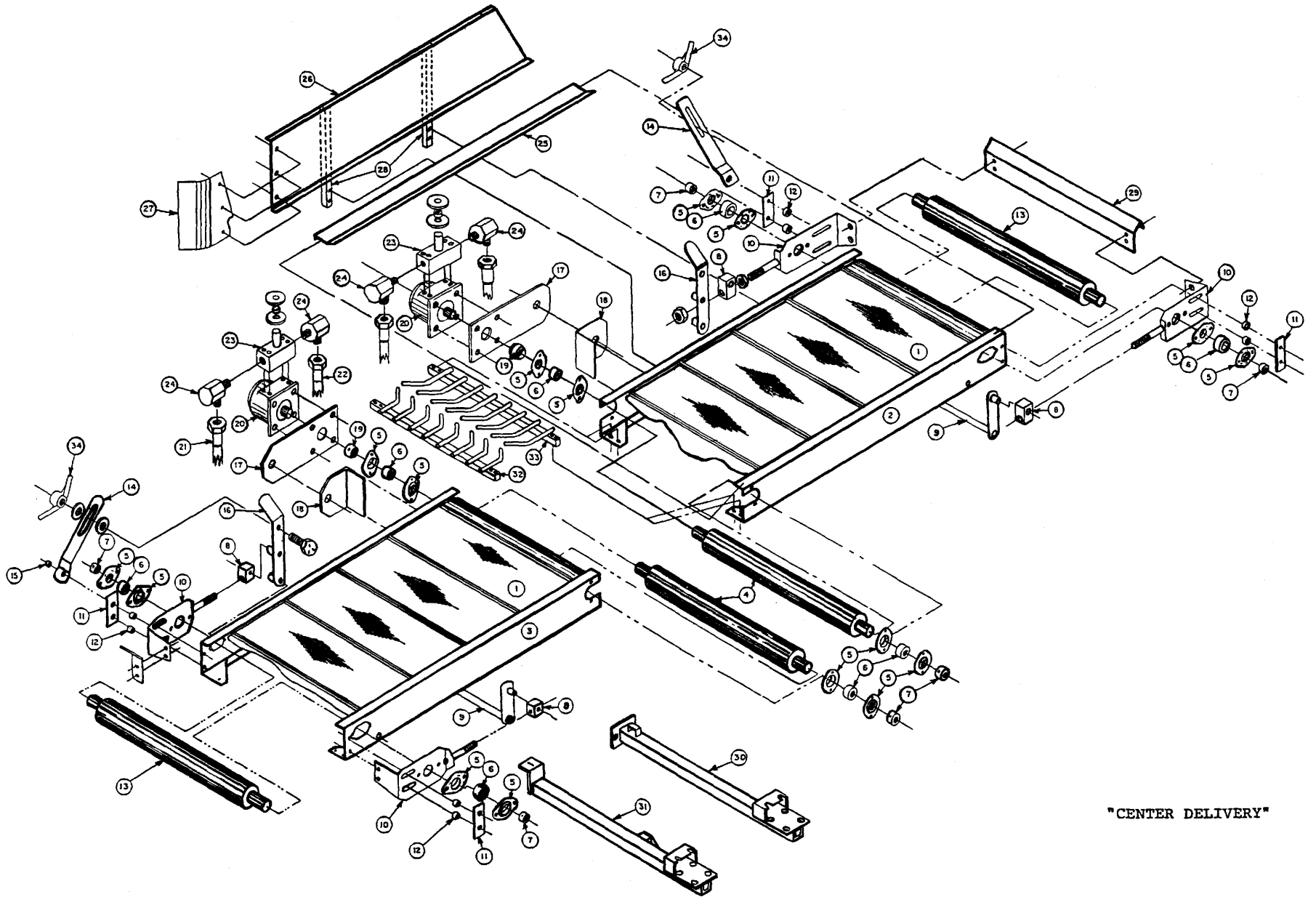
One Step Rod Cutter Rear Pull

Center Dump Trays

Section 10

Model Years 1988 – 1990	2-3
Model Years 1991 – 1992	4-5
Model Years 1993 – 1994	6-11
Model Years 1995 – Present.....	12-19
Model Years 2005 – Present (12 Row 30).....	20-23
Model Years 2005 – Present Offset Center Dump 14” Tray	24-25
42” Wide Trays 12 Row 22.....	26-27
Center Dump Windrowing Rods 1991 - Present.....	28-29

Return to this page by clicking the upper right corner of any page in this section.



"CENTER DELIVERY"

CENTER DUMP ASSEMBLY (1988–1990) (58" Tray)**Parts List**

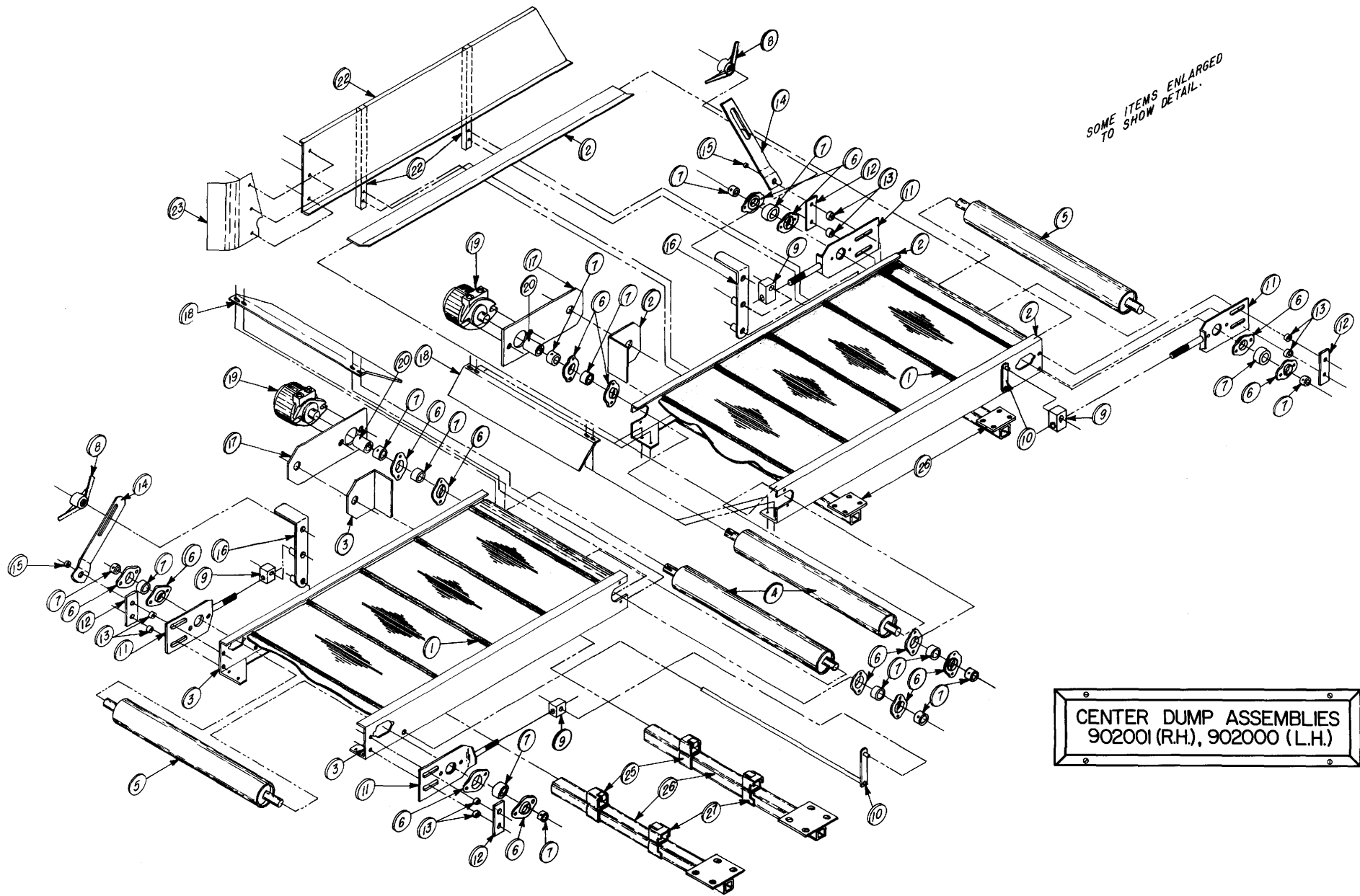
<u>Item No.</u>	<u>Obsolete No.</u>	<u>Order No.</u>	<u>Description</u>
1.	P-407-61	102022	Center Draper Belt (114")
2.	P-902053	P-902053*	LH Tray
3.	P-902052	P-902052*	RH Tray
4.	P-240-697	900366	Cross Conveyor Roller–Keyed
5.	P-13-74	106003	Flangett Housing–Pair
6.	P-202-103	102004	¾" Bearing Insert with Lock Collar
8.	P-214-66	900313	Swivel Adapter
9.	P-438-16	900386	Crank Tightener
10.	P-20-2095	900038*	Belt Tightener Bracket (1988–1990 Version)
11.	P-123-324	900277	Bearing Bracket Clamp
12.	P-313-418	900498	Bearing Bracket Spacer (5/16")
13.	P-240-696	900367	Cross Conveyor Roller–No Key
14.	P-202-906	900199	Brace Belt Tightener
15.	P-313-417	900499	Tightener Spacer (5/32")
16.	P-432-229	900575	Belt Tightener Lever
17.	P-900040	900040*	Motor Mount
18.	P-900041	900041*	Motor Mount Brace
19.	P-900042	103018	1" to ¾" Shaft Reducer
20.	101-1757	113022	Hydraulic Motor
21.	CL7	CL7	Hydraulic Pressure Hose ½" × 122"
22.	CL8	CL8	Hydraulic Return Hose ½" × 161"
**23.	85005143	85005143	Aluminum Manifold Valve (See Note)
24.	1501-6-8	101007	Hydraulic Hose Fittings
25.	P-902020	902020	Front Scraper
26.	P-902017	902004	Tray Back Assembly, LH
Not Shown	P-902016	902005	Tray Back Assembly, RH
27.	P-900016-9	900016	Tray Back End Deflector, RH
Not Shown	P-900015-9	900015	Tray Back End Deflector, LH
28.	P-900014	900014	Tray Back Vertical Supports (incl w/item # 26)
29.	P-900-054	902283*	End Deflectors
30.	P-90213	900145*	Center Tray Support Arms
31.	804116	900160*	Outside Tray Support Arms (specify L or R)
32.	P502-512	P-502-512*	RH Deflector Tines (Replaced by 900054)
33.	P-502-513	P-502-513*	LH Deflector Tines (Replaced by 900054)

* This part is manufactured on a built-to-order basis only. Call Pickett Equipment for availability and lead-time.

. Conversion Kits Available

<u>Kit No.</u>	<u>Description</u>
405006	1988-1990 Center Dump Hydraulic Motor Conversion Kit **

**For 1989 model machines w/aluminum manifold valves, call Pickett Equipment for conversion update information.



SOME ITEMS ENLARGED
TO SHOW DETAIL.

CENTER DUMP ASSEMBLIES
902001 (R.H.), 902000 (L.H.)

CENTER DUMP ASSEMBLIES, 6 row 30" & 8 row 22" (1991–1992)

(58" Tray)

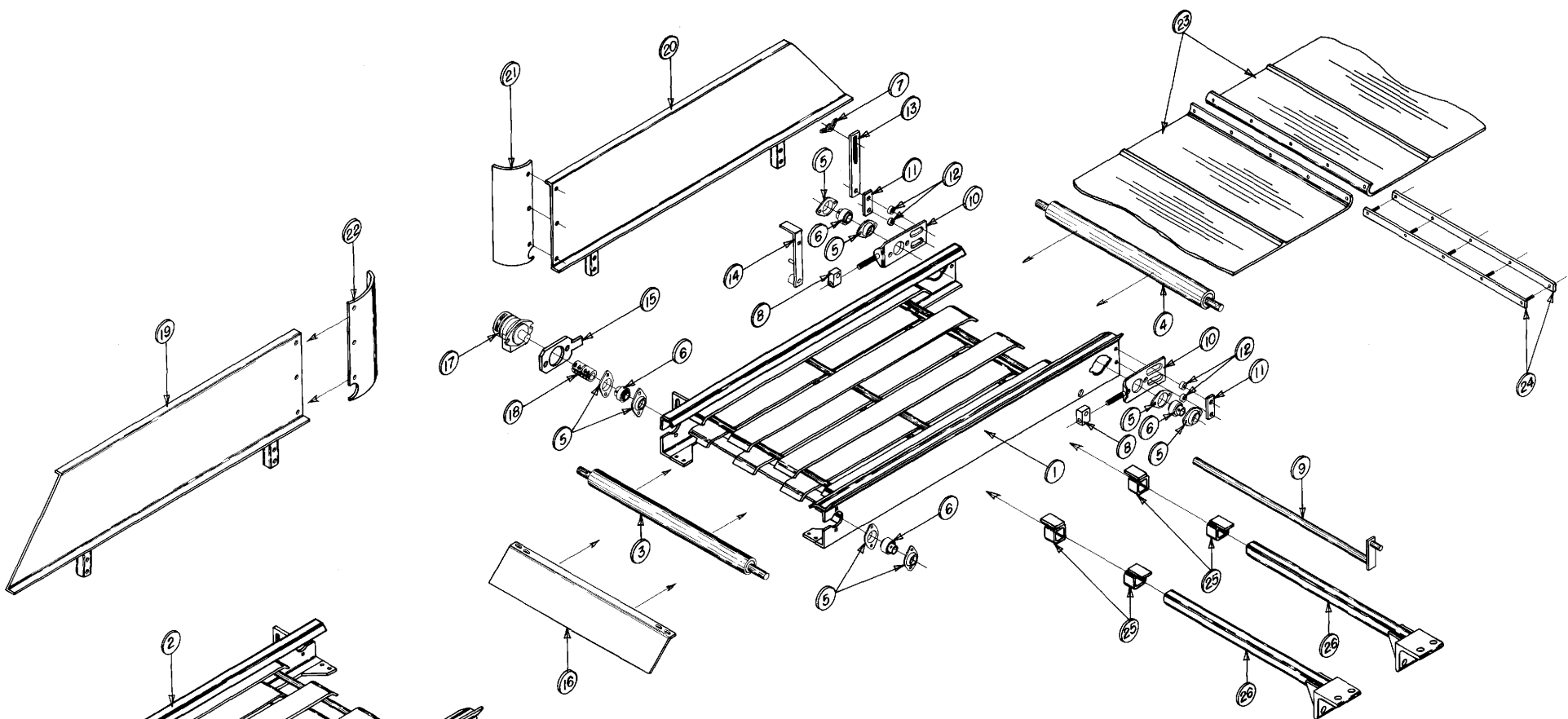
Parts List

<u>Item No.</u>	<u>Part No.</u>	<u>Description</u>
1.	102022	Belt, Center Draper with bar (114")
2.	902003	Left Hand Tray }Replaced by 902234
3.	902002	Right Hand Tray }Replaced by 902233
4.	900366	Conveyor Roller–keyed
5.	900367	Conveyor Roller–w/o key
6.	106003	Flangett, 2-Hole
7.	102004	Bearing, 3/4" Insert with Lock Collar
8.	106016	Fastener, Wing
9.	900313	Swivel Adapter
10.	900386	Crank Tightener Assembly
11.	900038*	Belt Tightener Bracket Assembly
12.	900277	Bearing Bracket Clamp
13.	900498	Bracket Spacer (5/16")
14.	900199	Belt Tightener
15.	900499	Tightener Spacer (5/32")
16.	900575	Belt Tightener Lever Assembly
17.	900040*	Hydraulic Motor Mount
18.	900054	Tray End Deflector
19.	113022	Motor, Canvas (MG Series)
20.	103018	Coupler, 1" x 3/4" Split
21.	902005	R.H. Tray Back Assembly–Not Shown
22.	902004	L.H. Tray Back Assembly
23.	900016	R.H. Deflector Shield
24.	900015	L.H. Deflector Shield–Not Shown
25.	900231*	Tray Mount Slide Locks without Notch
26.	900234*	Tray Support Arms
27.	900582*	Tray Mount Slide Lock with Notch
Not Shown	902001	Complete RH Tray Assembly }Replaced by 902235
Not Shown	902000	Complete LH Tray Assembly }Replaced by 902236

* This part is manufactured on a built-to-order basis only. Call Pickett Equipment for availability and lead-time.

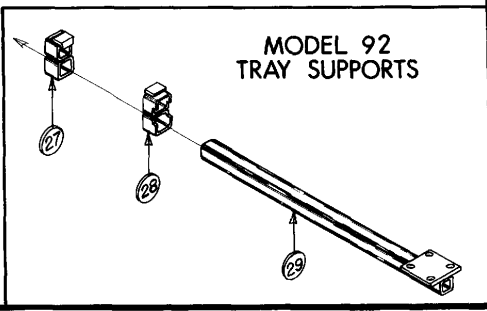
. Conversion Kits Available (See Service Update Section of this parts book)

<u>Kit No.</u>	<u>Description</u>
900754	Center Dump Tray Arm Kit (converts model '92 to '93)



CENTER DUMP ASSEMBLIES

THIS R.H. TRAY USES THE SAME PARTS PACKAGE AS IS SHOWN ON THE L.H. TRAY LAYOUT.



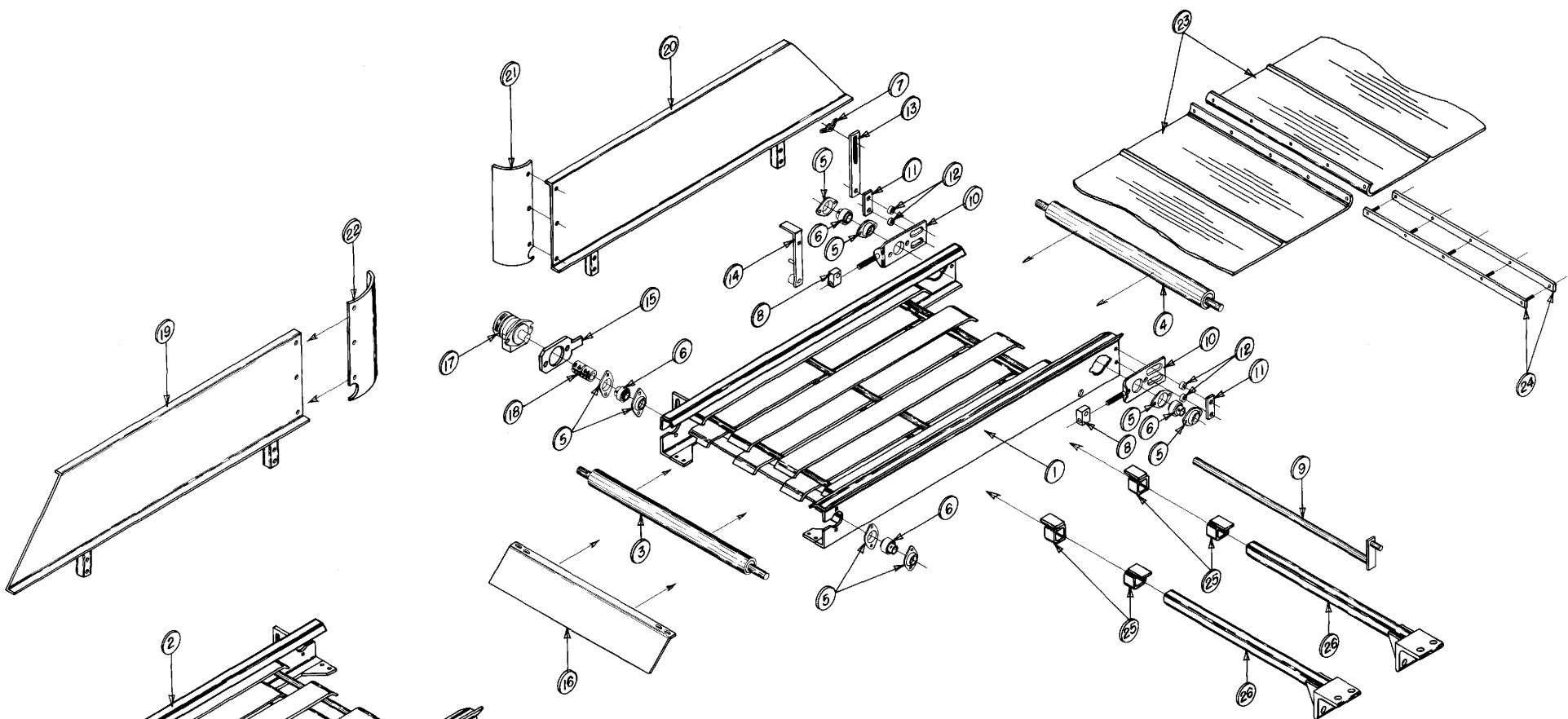
CENTER DUMP ASSEMBLY 4 Row 30 (1993–1994) (24" Tray)**Parts List**

<u>Item No.</u>	<u>Part No.</u>	<u>Description</u>
1.	902033	L.H. Tray } Replaced by 902222
2.	902032	R.H. Tray } Replaced by 902221
3.	900366	Crowned Roller Keyed
4.	900367	Conveyor Roller No Key
5.	106003	Flangett, 2-Hole
6.	102004	Bearing, 3/4" Insert with Lock Collar
7.	106014	Fastener, Wing
8.	900313	Swivel Adapter
9.	900386	Crank Tightener
10.	900038★	Belt Tightener Bracket
11.	900277	Bearing Bracket Clamp
12.	900498	Bracket Spacer
13.	900199	Belt Tightener
14.	900575	Belt Tightener Lever
15.	900225	Hydraulic Motor Mount
16.	900278	Right End Deflector Tray
17.	113022	Motor, Canvas (MG Series)
18.	103018	Coupler, 1" x 3/4" Split
19.	902050	R.H. Tray Back
20.	902051	L.H. Tray Back
21.	900016	R.H. Deflector Shield
22.	900015	L.H. Deflector Shield
23.	102066	Belt, Center Draper with bar (46")
24.	102020	Belt Connector Bar with bolts
25.	900551	Tray Mount Slide Locks
26.	900583	Tray Support Arm (See Hardware Items: A,B,C,D)
27.	900231★	Tray Mount Slide Lock without notch
28.	900582★	Tray Mount Slide Locks
29.	900234★	Tray Support Arm (See Hardware Items: E,F,G)
Not Shown	902035	Complete L.H. Center Dump Tray Assembly } Replaced by 902224
Not Shown	902034	Complete R.H. Center Dump Tray Assembly } Replaced by 902223

★ This part is manufactured on a built-to-order basis only. Call Pickett Equipment for availability and lead-time.

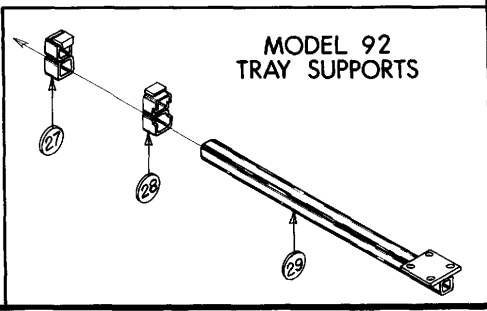
Hardware List

<u>Item No.</u>	<u>Part No.</u>	<u>Description</u>
A.	118025	1/2" x 5 1/2" NC Eye Bolt
B.		1/2" x 5" NC Hex Bolt
C.		1/2" Lock Washer
D.		1/2" NC Hex Nut
E.	121003	U-Bolt, Type D—5/8" x 3" Wide x 4 1/2" Long
F.		5/8" Lock Washer
G.		5/8" NC Hex Nut



THIS R.H. TRAY USES THE SAME PARTS PACKAGE AS IS SHOWN ON THE L.H. TRAY LAYOUT.

CENTER DUMP ASSEMBLIES



CENTER DUMP ASSEMBLY, 6 Row 28, 6 Row 30, & 8 Row 22 (1993–1994) (58" Tray)

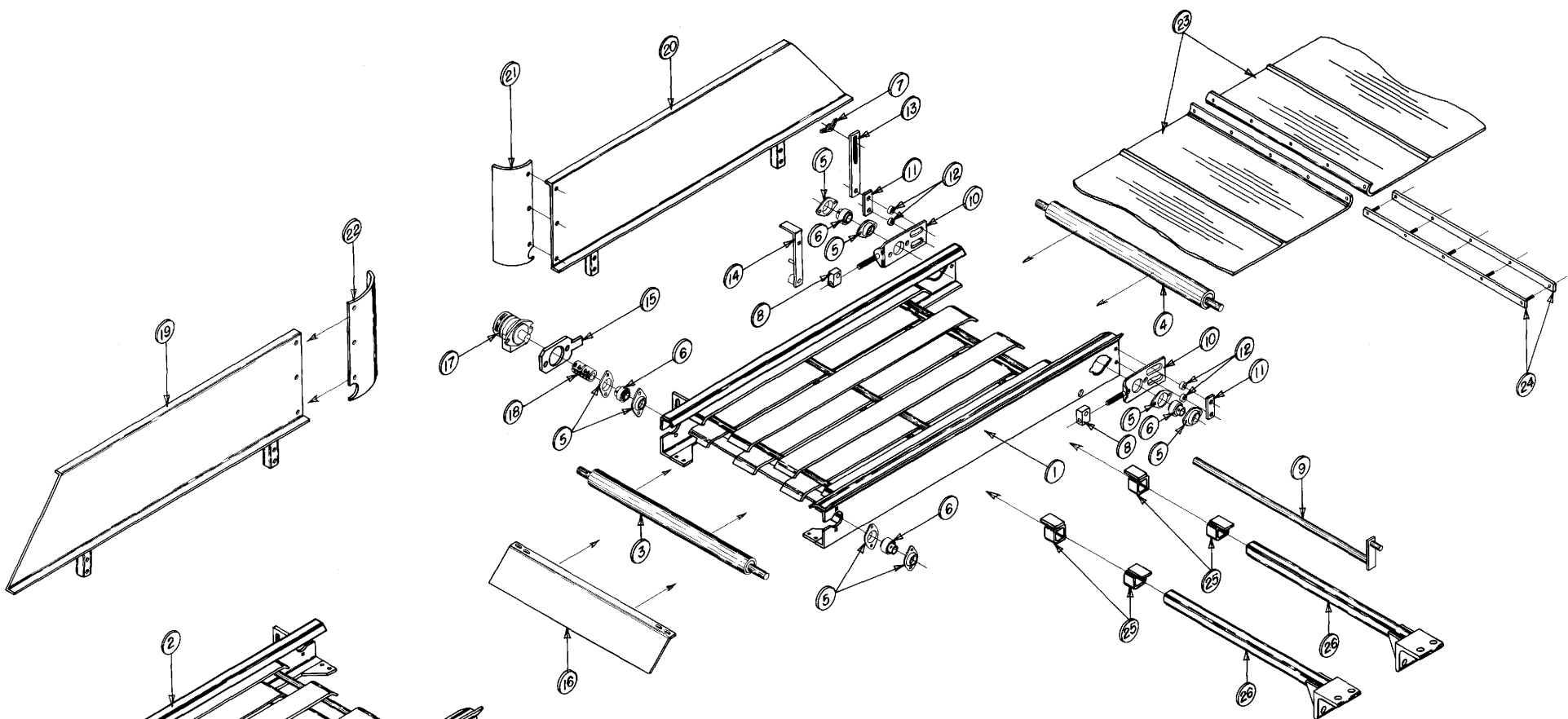
Parts List

<u>Item No.</u>	<u>Part No.</u>	<u>Description</u>
1.	902003	L.H. Tray } Replaced by 902234
2.	902002	R.H. Tray } Replaced by 902233
3.	900366	Crowned Roller—Keyed
4.	900367	Conveyor Roller—No Key
5.	106003	Flangette, 2-Hole
6.	102004	Bearing, 3/4" Insert with Lock Collar
7.	106016	Fastener Wing
8.	900313	Swivel Adapter
9.	900386	Crank Tightener
10.	900038★	Belt Tightener Bracket
11.	900277	Bearing Bracket Clamp
12.	900498	Bracket Spacer
13.	900199	Belt Tightener
14.	900575	Belt Tightener Lever
15.	900225	Hydraulic Motor Mount
16.	900278	Right End Deflector Tray
17.	113022	Motor, Canvas (MG Series)
18.	103018	Coupler, 1" × 3/4" Split
19.	902005	R.H. Tray Back
20.	902004	L.H. Tray Back
21.	900016	R.H. Deflector Shield
22.	900015	L.H. Deflector Shield
23.	102022	Belt, Center Draper with Bar (114")
24.	102020	Belt Connector Bar with Bolts
25.	900551	Tray Mount Slide Locks
26.	900583	Tray Support Arm (See Hardware: A,B,C,D)
27.	900231★	Tray Mount Slide Lock—without Notch
28.	900582★	Tray Mount Slide Lock—with Notch
29.	900234★	Tray Support Arm
Not Shown	902000	Complete L.H. Center Dump Tray Assembly } Replaced by 902236
Not Shown	902001	Complete R.H. Center Dump Tray Assembly } Replaced by 902235

★ This part is manufactured on a built-to-order basis only. Call Pickett Equipment for availability and lead-time.

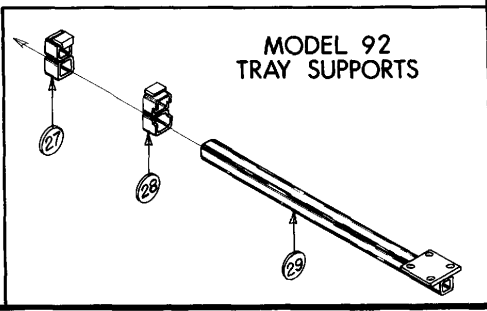
Hardware List

<u>Item No.</u>	<u>Part No.</u>	<u>Description</u>
A.	118025	1/2" × 4 1/2" NC Eye Bolt
B.		1/2" × 4 1/2" NC Hex Bolt
C.		1/2" Lock Washer
D.		1/2" NC Hex Nut
E.	121003	U-Bolt, Type D—5/8" × 3" Wide × 4 1/2" Long
F.		5/8" Lock Washer
G.		5/8" NC Hex Nut



THIS R.H. TRAY USES THE SAME PARTS PACKAGE AS IS SHOWN ON THE L.H. TRAY LAYOUT.

CENTER DUMP ASSEMBLIES



CENTER DUMP ASSEMBLY, 8 Row 30 & 12 Row 22 (1993–1994) (88" Tray)

Parts List

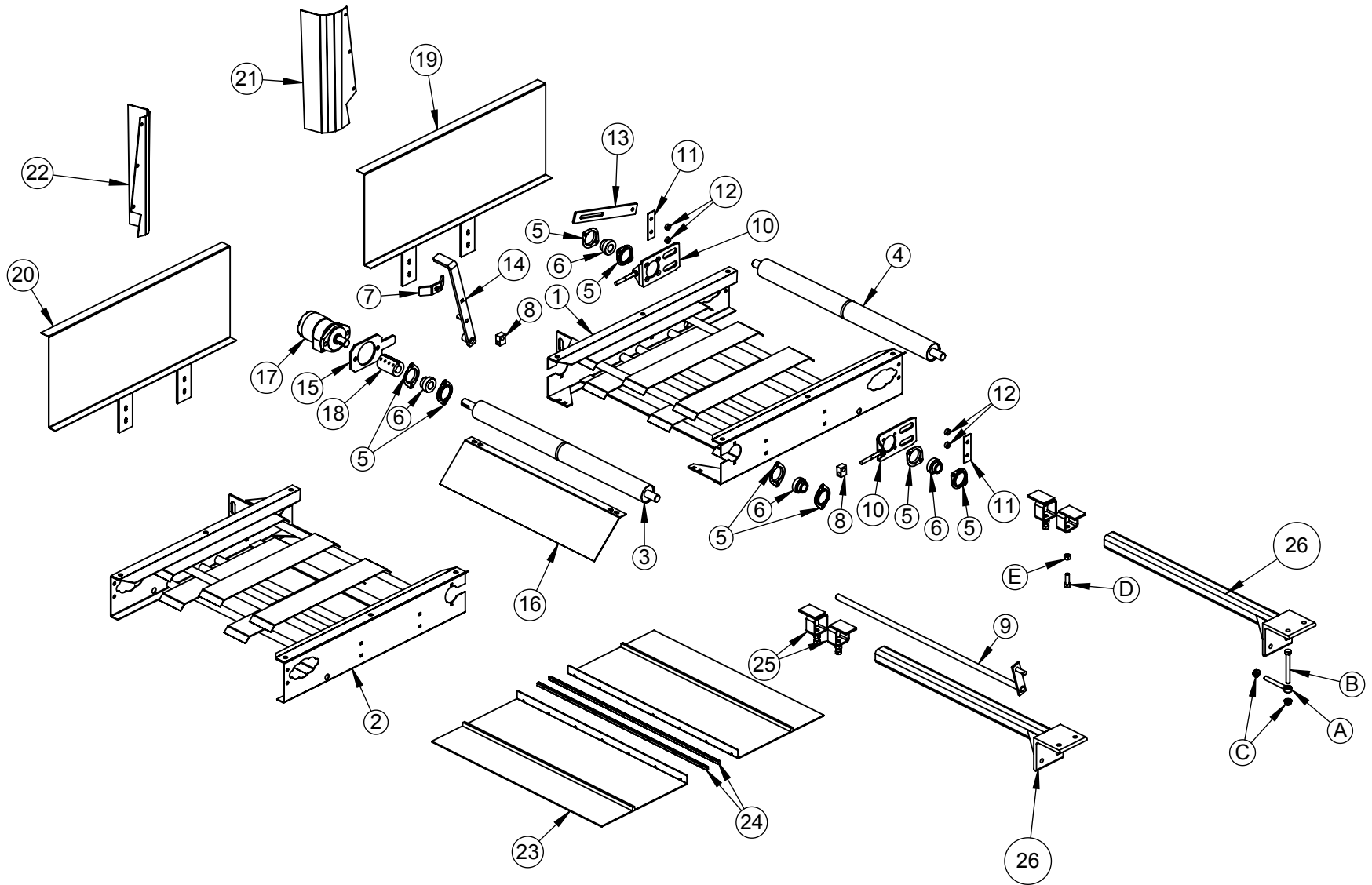
<u>Item No.</u>	<u>Part No.</u>	<u>Description</u>
1.	902061	L.H. Tray } Replaced by 902250
2.	902060	R.H. Tray } Replaced by 902249
3.	900366	Crowned Roller–Keyed
4.	900367	Conveyor Roller–No Key
5.	106003	Flangette, 2-Hole
6.	102004	Bearing, ¾" Insert with Lock Collar
7.	106016	Fastener Wing
8.	900313	Swivel Adapter
9.	900386	Crank Tightener
10.	900038*	Belt Tightener Bracket
11.	900277	Bearing Bracket Clamp
12.	900498	Bracket Spacer
13.	900199	Belt Tightener
14.	900575	Belt Tightener Lever
15.	900225	Hydraulic Motor Mount
16.	900278	Right End Deflector Tray
17.	113022	Motor, Canvas (MG Series)
18.	103018	Coupler, 1" x ¾" Split
19.	902057	R.H. Tray Back
20.	902058	L.H. Tray Back
21.	900016	R.H. Deflector Shield
22.	900015	L.H. Deflector Shield
23.	102058	Belt, Center Draper with Bar (174")
24.	102020	Belt Connector Bar with Bolts
25.	900551	Tray Mount Slide Locks
26.	900583	Tray Support Arm (See Hardware: A,B,C,D)
27.	900231*	Tray Mount Slide Lock–without Notch
28.	900582*	Tray Mount Slide Lock–with Notch
29.	900234*	Tray Support Arm (See Hardware: E,F,G)
Not Shown	902065	Complete L.H. Center Dump Tray Assembly } Replaced by 902252
Not Shown	902064	Complete R.H. Center Dump Tray Assembly } Replaced by 902251

* This part is manufactured on a built-to-order basis only. Call Pickett Equipment for availability.

Hardware List

<u>Item No.</u>	<u>Part No.</u>	<u>Description</u>
A.	118025	½" × 4½" NC Eye Bolt
B.		½" × 4½" NC Hex Bolt
C.		½" Lock Washer
D.		½" NC Hex Nut
E.	121003	U-Bolt, Type D–5/8" × 3" Wide × 4½" Long
F.		5/8" Lock Washer
G.		5/8" NC Hex Nut

Center Dump Trays



CENTER DUMP ASSEMBLY, 4 Row 30"

24" Trays

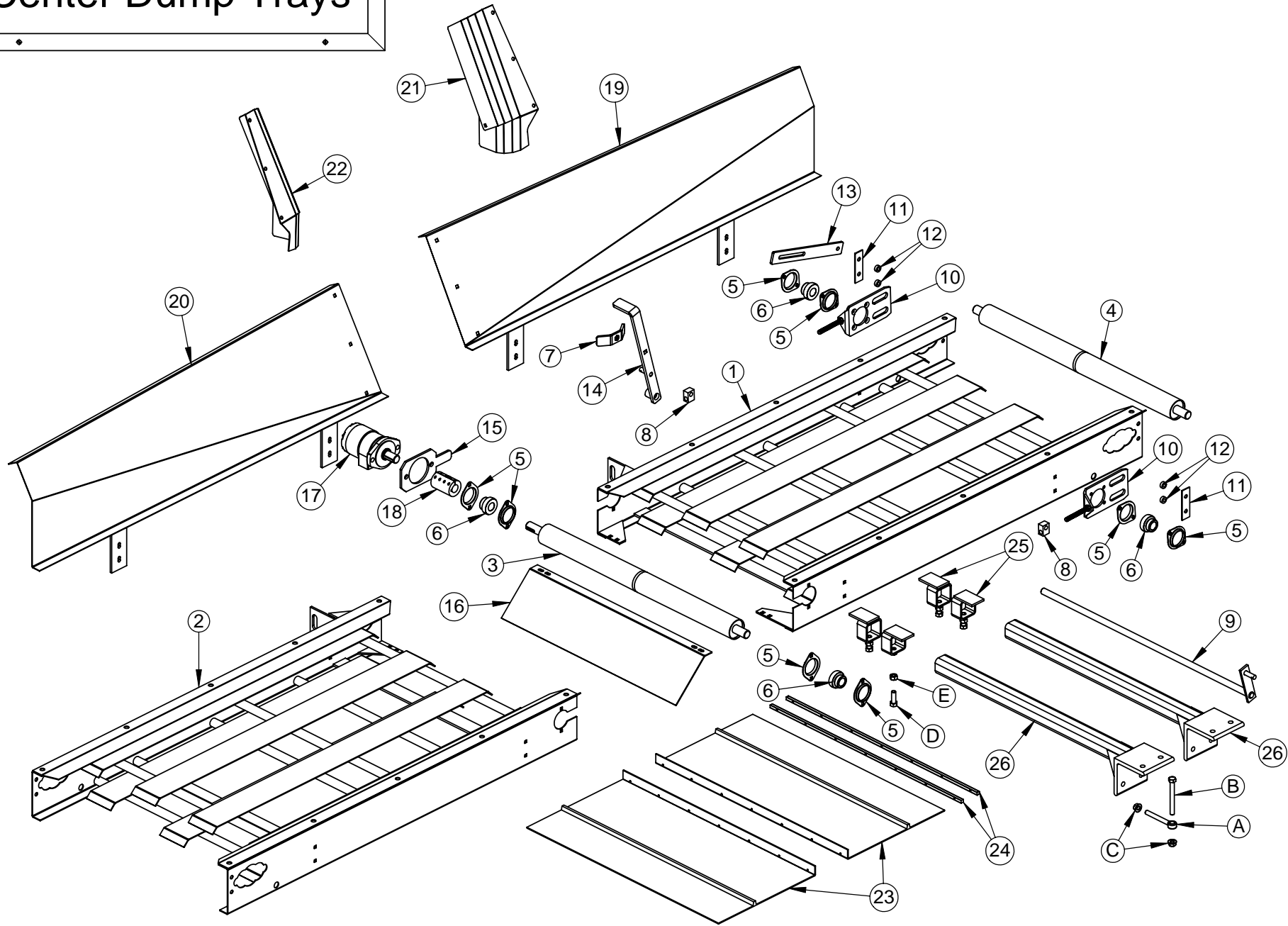
Parts List

<u>Item No.</u>	<u>Part No.</u>	<u>Qty</u>	<u>Description</u>
1.	902222	1	Left Hand Tray
2.	902221	1	Right Hand Tray
3.	901175	2	Crowned Roller–Keyed
4.	901176	2	Conveyor Roller–No Key
5.	106013	8pr.	Flangette, 2-Hole
6.	102005	8	Bearing, 1" Insert with Lock Collar
7.	106016	2	Fastener, Wing
8.	900313	4	Swivel Adapter
9.	900386	2	Crank Tightener
10.	901150	4	Belt Tightener Bracket
11.	900277	4	Bearing Bracket Clamp
12.	900498	8	Bracket Spacer
13.	900199	2	Belt Tightener
14.	900575	2	Belt Tightener Lever
15.	900225	2	Hydraulic Motor Mount
16.	900278	2	Tray End Deflector
17.	113022	2	Motor, Canvas Hydraulic
18.	103017	2	Coupler, 1" × 3" Split
19.	902051	1	LH Tray Back
20.	902050	1	RH Tray Back
21.	900016	1	Tray Back Deflector, LH Tray
22.	900015	1	Tray Back Deflector, RH Tray
23.	102066	2	Belt, Center Draper with Bar 46"
24.	102020	2	Belt Connector Bar with Bolts
25.	900551	8	Tray Mount Slide Locks
26.	900583	4	Tray Support Arm
	902224	1	Complete LH Center Dump Tray (hydraulic hoses not included)
	902223	1	Complete RH Center Dump Tray (hydraulic hoses not included)

Hardware List

<u>Item No.</u>	<u>Part No.</u>	<u>Qty</u>	<u>Description</u>
A.	118025	8	1/2" × 4 1/4" NC Eye Bolt
B.		8	1/2" × 4 1/2" NC Hex Bolt
C.		16	1/2" NC Whiz Nut
D.		8	1/2" × 1 1/2" NC Hex Bolt
E.		8	1/2" NC Hex Nut

Center Dump Trays



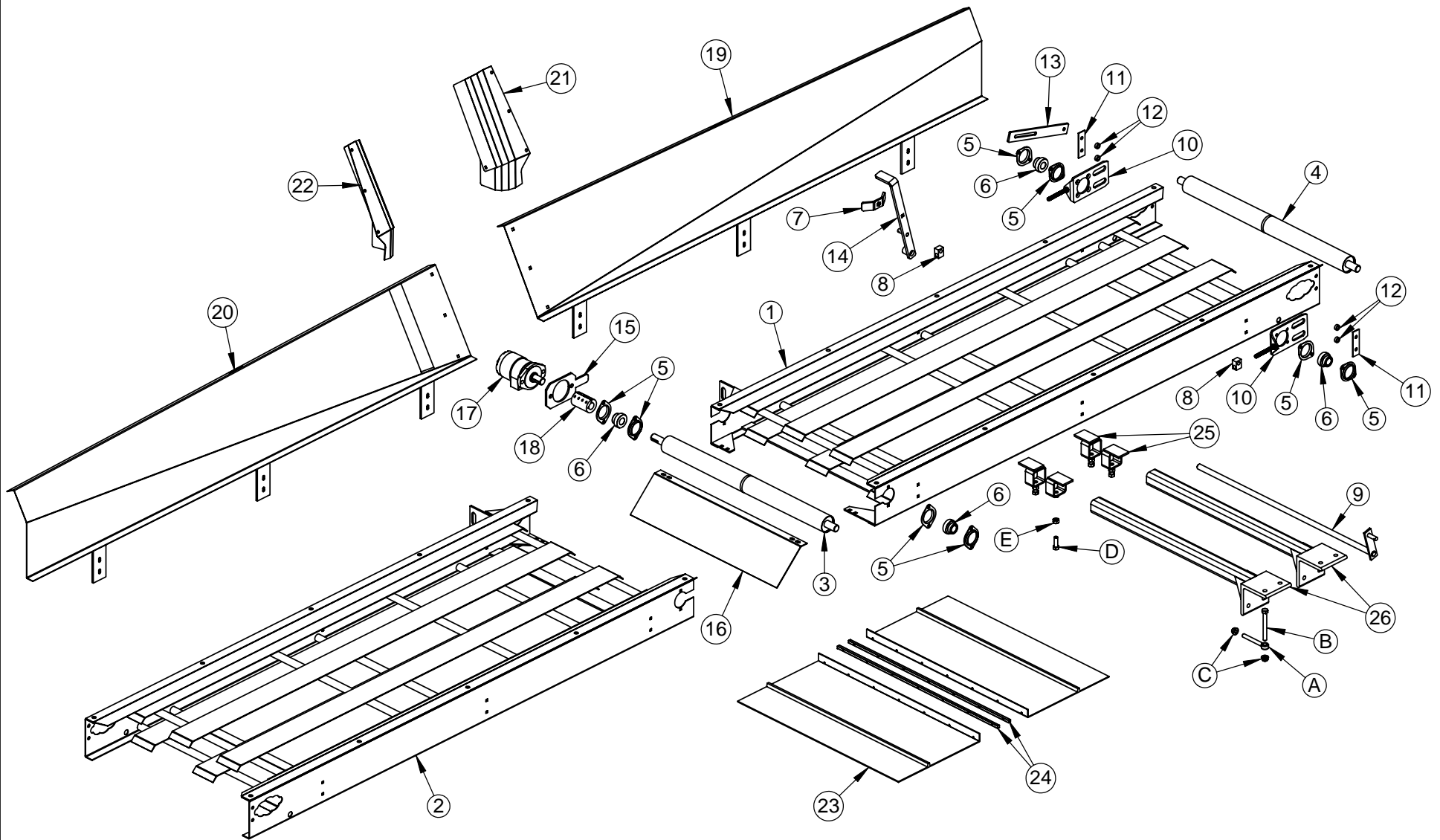
CENTER DUMP ASSEMBLY, 6 Row 28, 6 Row 30 & 8 Row 22**58" Trays****Parts List**

<u>Item No.</u>	<u>Part No.</u>	<u>Qty</u>	<u>Description</u>
1.	902234	1	Left Hand Tray
2.	902233	1	Right Hand Tray
3.	901175	2	Crowned Roller–Keyed
4.	901176	2	Conveyor Roller–No Key
5.	106013	8pr.	Flangette, 2-Hole
6.	102005	8	Bearing, 1" Insert with Lock Collar
7.	106016	2	Fastener, Wing
8.	900313	4	Swivel Adapter
9.	900386	2	Crank Tightener
10.	901150	4	Belt Tightener Bracket
11.	900277	4	Bearing Bracket Clamp
12.	900498	8	Bracket Spacer
13.	900199	2	Belt Tightener
14.	900575	2	Belt Tightener Lever
15.	900225	2	Hydraulic Motor Mount
16.	900278	2	Tray End Deflector
17.	113022	2	Motor, Canvas Hydraulic
18.	103017	2	Coupler, 1" × 3" Split
19.	902284	1	LH Tilted Tray Back
20.	902285	1	RH Tilted Tray Back
21.	804282	1	Tray Back Deflector, LH Tray
22.	804283	1	Tray Back Deflector, RH Tray
23.	102022	2	Belt, Center Draper with Bar 114"
24.	102020	2	Belt Connector Bar with Bolts
25.	900551	8	Tray Mount Slide Locks
26.	900583	4	Tray Support Arm
	902236	1	Complete LH Center Dump Tray (hydraulic hoses not included)
	902235	1	Complete RH Center Dump Tray (hydraulic hoses not included)

Hardware List

<u>Item No.</u>	<u>Part No.</u>	<u>Qty</u>	<u>Description</u>
A.	118025	8	1/2" × 4 1/4" NC Eye Bolt
B.		8	1/2" × 4 1/2" NC Hex Bolt
C.		16	1/2" NC Whiz Nut
D.		8	1/2" × 1 1/2" NC Hex Bolt
E.		8	1/2" NC Hex Nut

Center Dump Trays



CENTER DUMP ASSEMBLY, 8 Row 30 & 12 Row 22

88" Trays

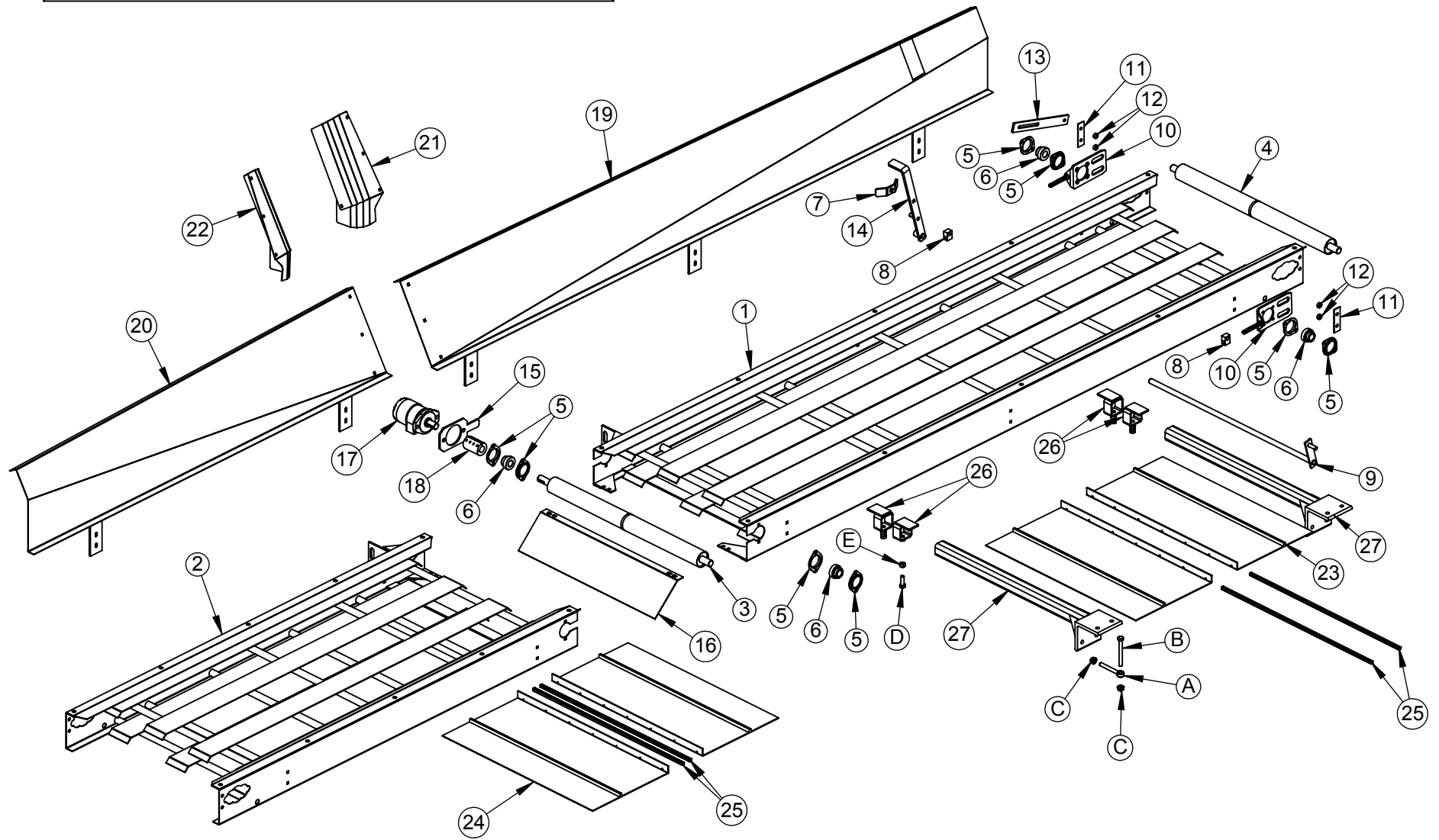
Parts List

<u>Item No.</u>	<u>Part No.</u>	<u>Qty</u>	<u>Description</u>
1.	902250	1	Left Hand Tray
2.	902249	1	Right Hand Tray
3.	901175	2	Crowned Roller–Keyed
4.	901176	2	Conveyor Roller–No Key
5.	106013	8pr.	Flangette, 2-Hole
6.	102005	8	Bearing, 1" Insert with Lock Collar
7.	106016	2	Fastener, Wing
8.	900313	4	Swivel Adapter
9.	900386	2	Crank Tightener
10.	901150	4	Belt Tightener Bracket
11.	900277	4	Bearing Bracket Clamp
12.	900498	8	Bracket Spacer
13.	900199	2	Belt Tightener
14.	900575	2	Belt Tightener Lever
15.	900225	2	Hydraulic Motor Mount
16.	900278	2	Tray End Deflector
17.	113022	2	Motor, Canvas Hydraulic
18.	103017	2	Coupler, 1" × 3" Split
19.	902313	1	LH Tilted Tray Back
20.	902314	1	RH Tilted Tray Back
21.	804282	1	Tray Back Deflector, LH Tray
22.	804283	1	Tray Back Deflector, RH Tray
23.	102058	2	Belt, Center Draper with Bar 174"
24.	102020	2	Belt Connector Bar with Bolts
25.	900551	8	Tray Mount Slide Locks
26.	900583	4	Tray Support Arm
	902252	1	Complete LH Center Dump Tray (hydraulic hoses not included)
	902251	1	Complete RH Center Dump Tray (hydraulic hoses not included)

Hardware List

<u>Item No.</u>	<u>Part No.</u>	<u>Qty</u>	<u>Description</u>
A.	118025	8	1/2" × 4 1/4" NC Eye Bolt
B.		8	1/2" × 4 1/2" NC Hex Bolt
C.		16	1/2" NC Whiz Nut
D.		8	1/2" x 1 1/2" NC Hex Bolt
E.		8	1/2" NC Hex Nut

Offset Center Dump Trays



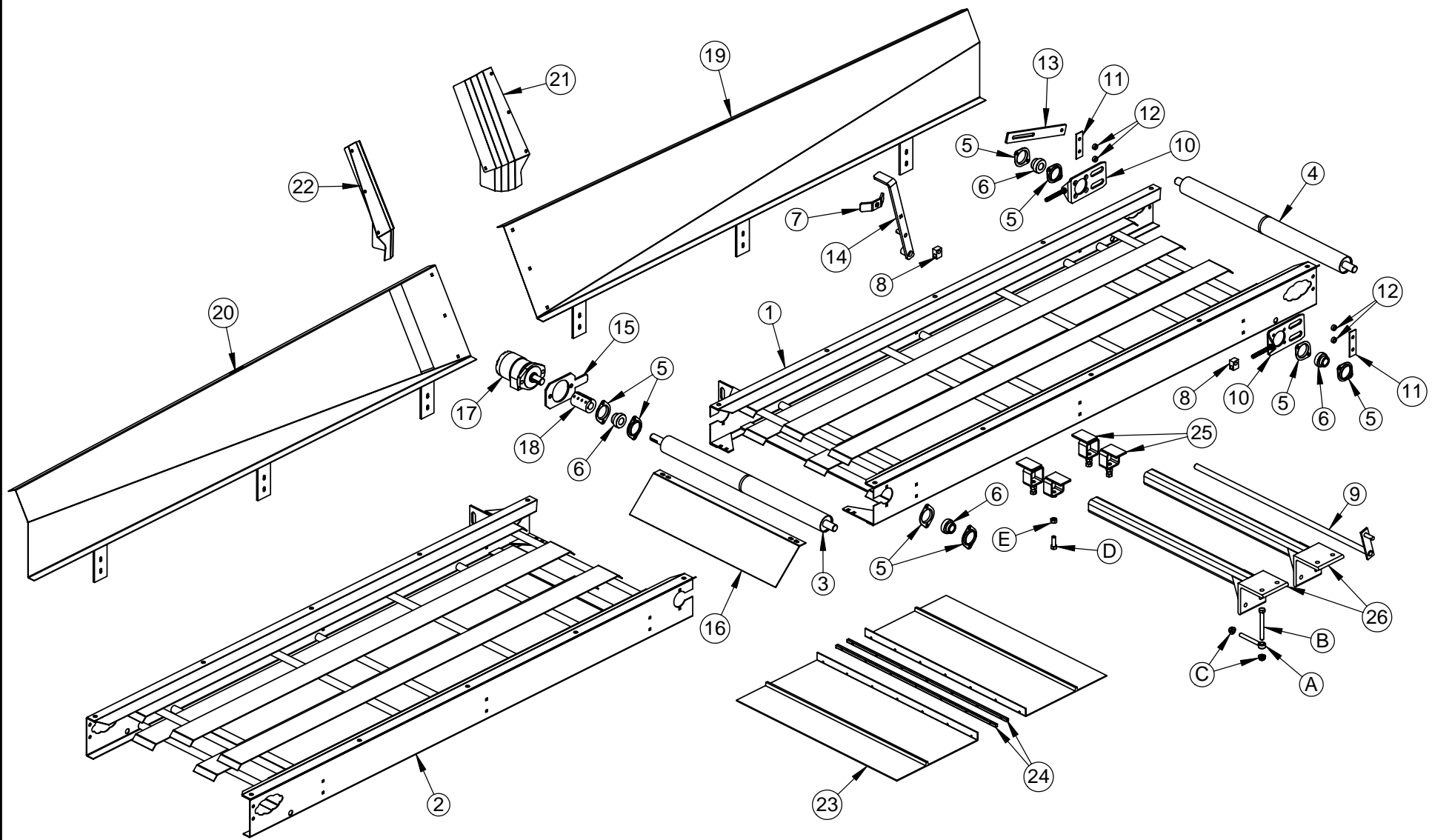
OFFSET CENTER DUMP ASSEMBLY, 12 Row 22**118" & 76" Trays****Parts List**

<u>Item No.</u>	<u>Part No.</u>	<u>Qty</u>	<u>Description</u>
1.	902259	1	Left Hand Tray 118"
2.	902241	1	Right Hand Tray 76"
3.	901175	2	Crowned Roller–Keyed
4.	901176	2	Conveyor Roller–No Key
5.	106013	8pr.	Flangette, 2-Hole
6.	102005	8	Bearing, 1" Insert with Lock Collar
7.	106016	2	Fastener, Wing
8.	900313	4	Swivel Adapter
9.	900386	2	Crank Tightener
10.	901150	4	Belt Tightener Bracket
11.	900277	4	Bearing Bracket Clamp
12.	900498	8	Bracket Spacer
13.	900199	2	Belt Tightener
14.	900575	2	Belt Tightener Lever
15.	900225	2	Hydraulic Motor Mount
16.	900278	2	Tray End Deflector
17.	113022	2	Motor, Canvas Hydraulic
18.	103017	2	Coupler, 1" × 3" Split
19.	902312	1	LH Tilted Tray Back 118"
20.	902094-A	1	RH Tilted Tray Back 76"
21.	804282	1	Tray Back Deflector, LH Tray
22.	804283	1	Tray Back Deflector, RH Tray
23.	102023	1	Belt, LH Center Draper with Bar 234"
24.	102069	1	Belt, RH Center Draper with Bar 150"
25.	102020	2	Belt Connector Bar with Bolts
26.	900551	8	Tray Mount Slide Locks
27.	900583	4	Tray Support Arm
	902260	1	Complete LH Center Dump Tray 118" (hydraulic hoses not included)
	902243	1	Complete RH Center Dump Tray 76" (hydraulic hoses not included)

Hardware List

<u>Item No.</u>	<u>Part No.</u>	<u>Qty</u>	<u>Description</u>
A.	118025	8	1/2" × 4 1/4" NC Eye Bolt
B.		8	1/2" × 4 1/2" NC Hex Bolt
C.		16	1/2" NC Whiz Nut
D.		8	1/2" x 1 1/2" NC Hex Bolt
E.		8	1/2" NC Hex Nut

Center Dump Trays



CENTER DUMP ASSEMBLY, 12 Row 30

118" Trays

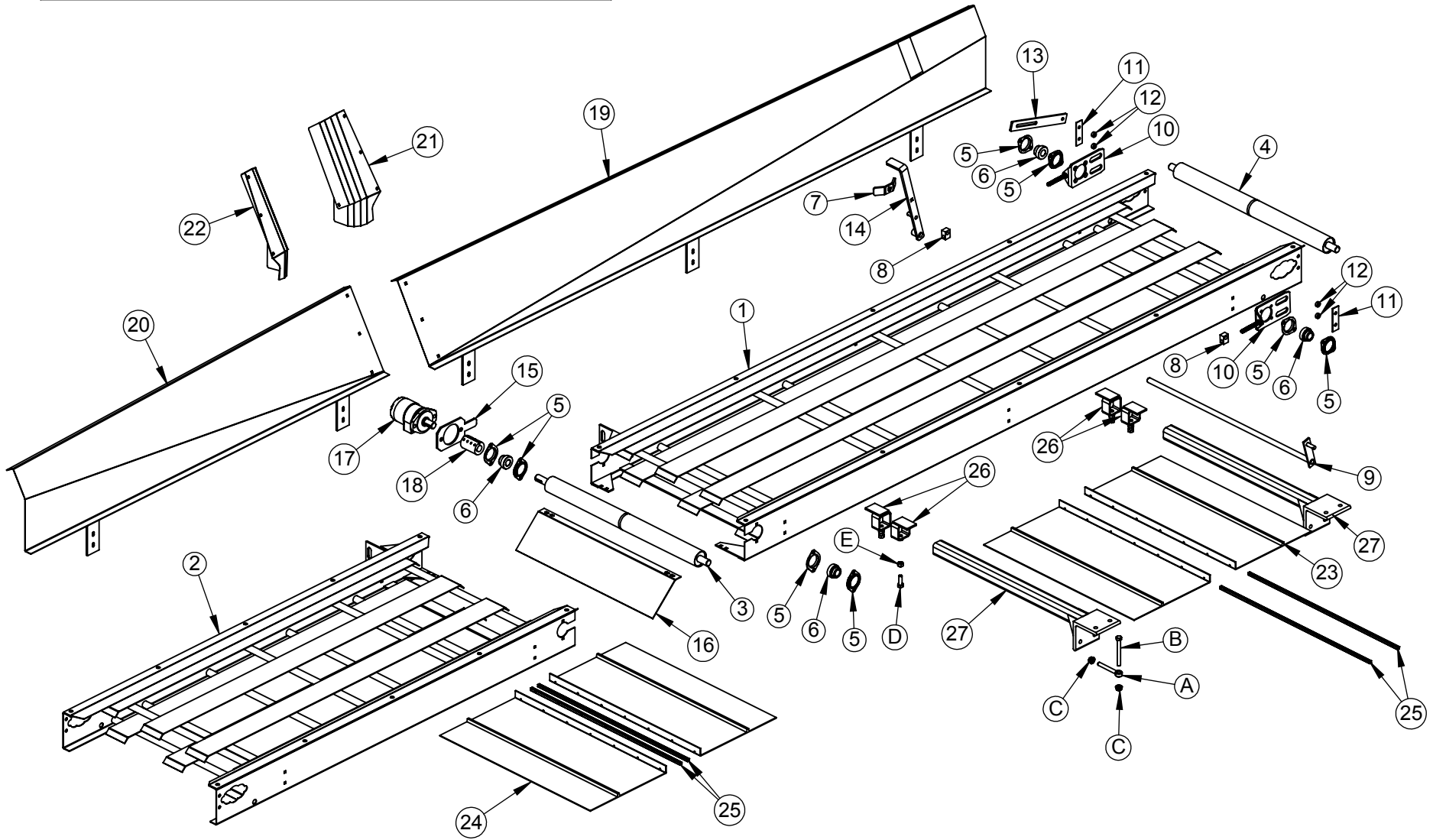
Parts List

<u>Item No.</u>	<u>Part No.</u>	<u>Qty</u>	<u>Description</u>
1.	902259	1	Left Hand Tray
2.	902275	1	Right Hand Tray
3.	901175	2	Crowned Roller–Keyed
4.	901176	2	Conveyor Roller–No Key
5.	106013	8pr.	Flangette, 2-Hole
6.	102005	8	Bearing, 1" Insert with Lock Collar
7.	106016	2	Fastener, Wing
8.	900313	4	Swivel Adapter
9.	900386	2	Crank Tightener
10.	901150	4	Belt Tightener Bracket
11.	900277	4	Bearing Bracket Clamp
12.	900498	8	Bracket Spacer
13.	900199	2	Belt Tightener
14.	900575	2	Belt Tightener Lever
15.	900225	2	Hydraulic Motor Mount
16.	900278	2	Tray End Deflector
17.	113022	2	Motor, Canvas Hydraulic
18.	103017	2	Coupler, 1" × 3" Split
19.	902312	1	LH Tilted Tray Back
20.	902386	1	RH Tilted Tray Back
21.	804282	1	Tray Back Deflector, LH Tray
22.	804283	1	Tray Back Deflector, RH Tray
23.	102023	2	Belt, Center Draper with Bar 234"
24.	102020	2	Belt Connector Bar with Bolts
25.	900551	8	Tray Mount Slide Locks
26.	900583	4	Tray Support Arm
	902260	1	Complete LH Center Dump Tray (hydraulic hoses not included)
	902276	1	Complete RH Center Dump Tray (hydraulic hoses not included)

Hardware List

<u>Item No.</u>	<u>Part No.</u>	<u>Qty</u>	<u>Description</u>
A.	118025	8	1/2" × 4 1/4" NC Eye Bolt
B.		8	1/2" × 4 1/2" NC Hex Bolt
C.		16	1/2" NC Whiz Nut
D.		8	1/2" × 1 1/2" NC Hex Bolt
E.		8	1/2" NC Hex Nut

Offset Center Dump Trays



OFFSET CENTER DUMP ASSEMBLY, 12 Row 30

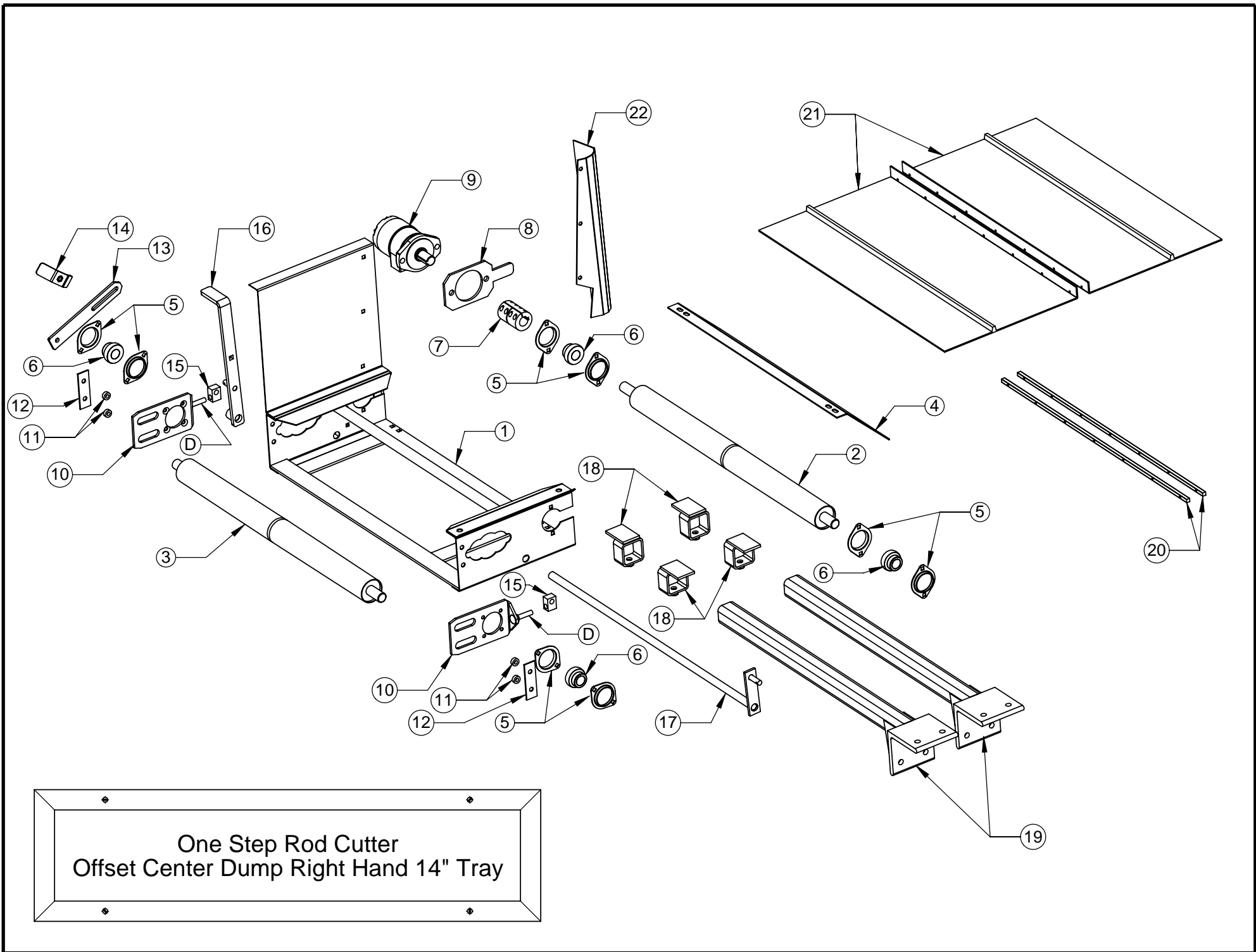
148" & 88" Trays

Parts List

<u>Item No.</u>	<u>Part No.</u>	<u>Qty</u>	<u>Description</u>
1.	902359	1	Left Hand Tray 148"
2.	902249	1	Right Hand Tray 88"
3.	901175	2	Crowned Roller–Keyed
4.	901176	2	Conveyor Roller–No Key
5.	106013	8pr.	Flangette, 2-Hole
6.	102005	8	Bearing, 1" Insert with Lock Collar
7.	106016	2	Fastener, Wing
8.	900313	4	Swivel Adapter
9.	900386	2	Crank Tightener
10.	901150	4	Belt Tightener Bracket
11.	900277	4	Bearing Bracket Clamp
12.	900498	8	Bracket Spacer
13.	900199	2	Belt Tightener
14.	900575	2	Belt Tightener Lever
15.	900225	2	Hydraulic Motor Mount
16.	900278	2	Tray End Deflector
17.	113022	2	Motor, Canvas Hydraulic
18.	103017	2	Coupler, 1" × 3" Split
19.	902365	1	LH Tilted Tray Back 148"
20.	902314	1	RH Tilted Tray Back 88"
21.	804282	1	Tray Back Deflector, LH Tray
22.	804283	1	Tray Back Deflector, RH Tray
23.	102162	1	Belt, LH Center Draper with Bar 294"
24.	102058	1	Belt, RH Center Draper with Bar 174"
25.	102020	2	Belt Connector Bar with Bolts
26.	900551	8	Tray Mount Slide Locks
27.	900583	4	Tray Support Arm
	902360	1	Complete LH Center Dump Tray 148" (hydraulic hoses not included)
	902251	1	Complete RH Center Dump Tray 88" (hydraulic hoses not included)

Hardware List

<u>Item No.</u>	<u>Part No.</u>	<u>Qty</u>	<u>Description</u>
A.	118025	8	1/2" × 4 1/4" NC Eye Bolt
B.		8	1/2" × 4 1/2" NC Hex Bolt
C.		16	1/2" NC Whiz Nut
D.		8	1/2" x 1 1/2" NC Hex Bolt
E.		8	1/2" NC Hex Nut



One Step Rod Cutter
Offset Center Dump Right Hand 14" Tray

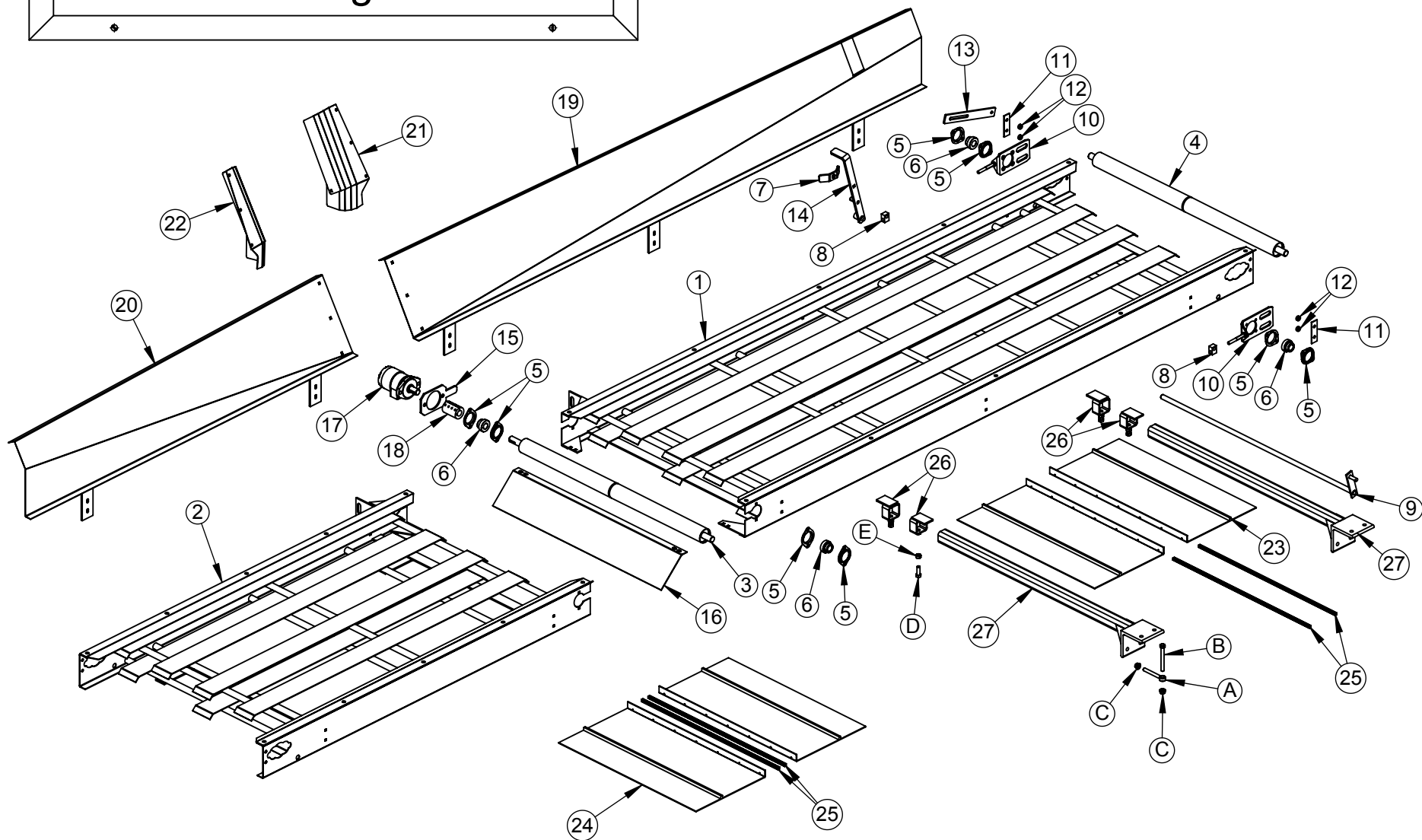
OFFSET CENTER DUMP–RIGHT HAND–14” Tray
Parts List

<u>Item No.</u>	<u>Part No.</u>	<u>Description</u>
1.	902351	Right Hand Tray, Weld Assembly
2.	901175	Crowned Belt Drive Roller, 1” keyed Shaft
3.	901176	Belt Idler Roller, 1” Shaft–No key
4.	900278	Deflector Shield, Tray End
5.	106013	Flangette, 1” Bearing 2-Hole Pr.
6.	102005	Bearing, 1” Insert with Lock Collar
7.	103017	Coupler, 1” x 3” Split
8.	900225	Hydraulic Motor Mount
9.	113022	Motor, Canvas–MG Series
10.	901150	Bracket, 1” Bearing Belt Tightener
11.	900498	Bracket Spacer
12.	900277	Bearing Bracket Clamp
13.	804289	Belt Tightener
14.	106016	Fastener, Wing
15.	900313	Swivel Adapter
16.	900575	Belt Tightener Lever
17.	900386	Crank Tightener
18.	900551	Tray Mount Slide Locks
19.	900583	Tray Support Arm
20.	102020	Belt Connector Bar with bolts
21.	102143	Belt, SE Draper with bar (26”)
22.	900015	Tray Back Deflector - L.H.
	902350	Complete Offset Center Dump Right Hand Tray (includes all parts shown) (hydraulic hoses and adaptors not included)

Hardware List

<u>Item No.</u>	<u>Part No.</u>	<u>Description</u>
A.	118025	1/2” x 4 1/4” NC Eye Bolt
B.		1/2” x 4 1/2” NC Hex Bolt
C.		1/2” Wiz Nut
D.		7/16” x 2 1/4” Carriage Bolt

Offset Center Dump Trays 118" & 76" Long x 42" Wide

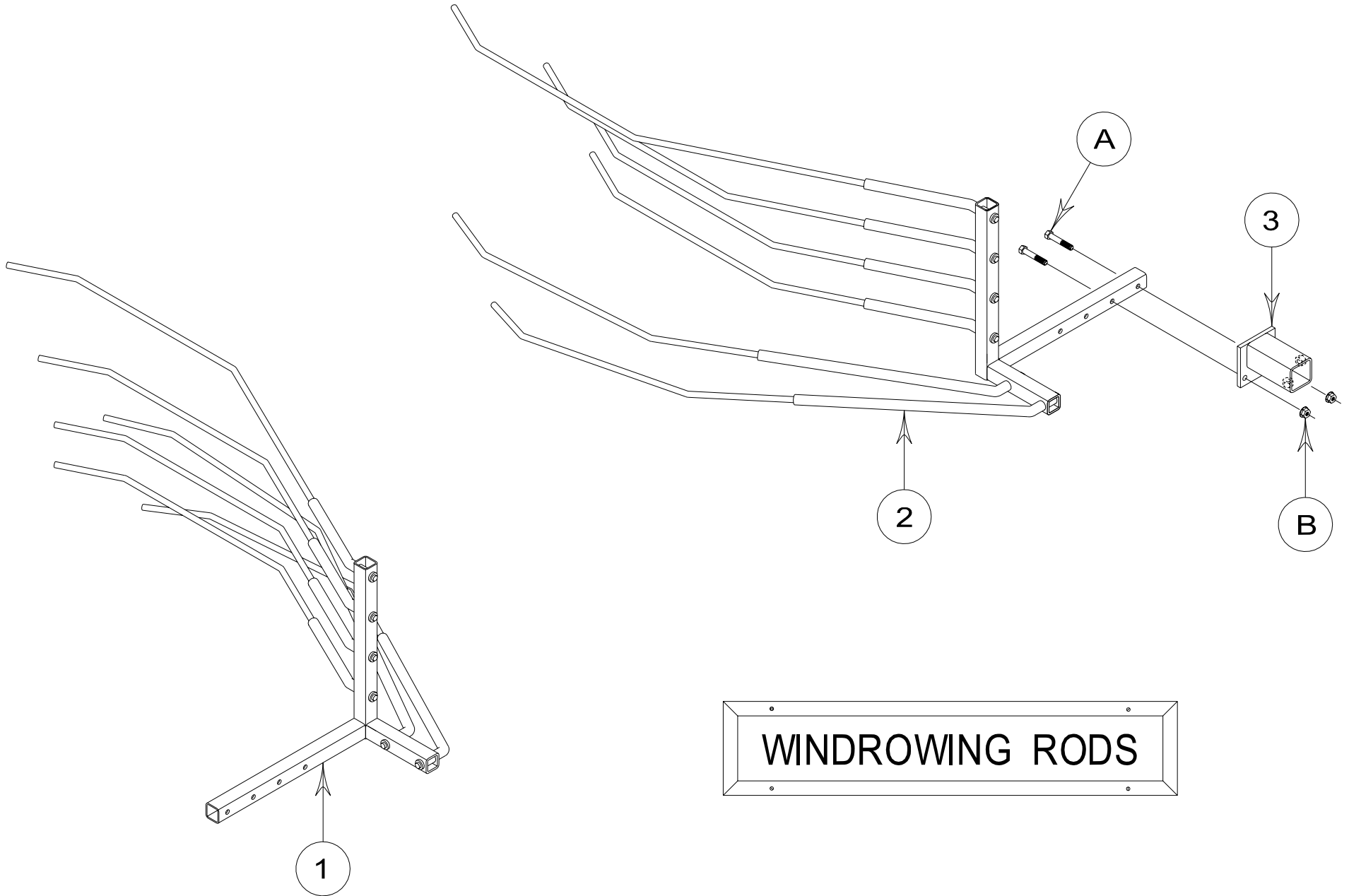


OFFSET CENTER DUMP ASSEMBLY, 12 Row 22**118" & 76" Long x 42" Wide Trays****Parts List**

<u>Item No.</u>	<u>Part No.</u>	<u>Qty</u>	<u>Description</u>
1.	902259-WD	1	Left Hand Tray 118"
2.	902241-WD	1	Right Hand Tray 76"
3.	804245	2	Crowned Roller–Keyed
4.	804246	2	Conveyor Roller–No Key
5.	106013	8pr.	Flangette, 2-Hole
6.	102005	8	Bearing, 1" Insert with Lock Collar
7.	106016	2	Fastener, Wing
8.	900313	4	Swivel Adapter
9.	804250	2	Crank Tightener
10.	901150	4	Belt Tightener Bracket
11.	900277	4	Bearing Bracket Clamp
12.	900498	8	Bracket Spacer
13.	900199	2	Belt Tightener
14.	900575	2	Belt Tightener Lever
15.	900225	2	Hydraulic Motor Mount
16.	804242	2	Tray End Deflector
17.	113022	2	Motor, Canvas Hydraulic
18.	103017	2	Coupler, 1" x 3" Split
19.	902312	1	LH Tilted Tray Back 118"
20.	902094-A	1	RH Tilted Tray Back 76"
21.	804282	1	Tray Back Deflector, LH Tray
22.	804283	1	Tray Back Deflector, RH Tray
23.	102288	1	Belt, LH Center Draper with Bar 234"
24.	102290	1	Belt, RH Center Draper with Bar 150"
25.	102160	2	Belt Connector Bar with Bolts
26.	900551	8	Tray Mount Slide Locks
27.	804238-A	4	Tray Support Arm
	902260-WD	1	Complete LH Center Dump Tray 118" (hydraulic hoses not included)
	902243-WD	1	Complete RH Center Dump Tray 76" (hydraulic hoses not included)

Hardware List

<u>Item No.</u>	<u>Part No.</u>	<u>Qty</u>	<u>Description</u>
A.	118025	8	1/2" x 4 1/4" NC Eye Bolt
B.		8	1/2" x 4 1/2" NC Hex Bolt
C.		16	1/2" NC Whiz Nut
D.		8	1/2" x 1 1/2" NC Hex Bolt
E.		8	1/2" NC Hex Nut



WINDROWING RODS

WINDROWING RODS (1991–Present)

Parts List

<u>Item No.</u>	<u>Part No.</u>	<u>Description</u>
1.	900395	Center Dump Windrowing Rods, R.H.
2.	900394	Center Dump Windrowing Rods, L.H.
3.	900185	Windrowing Rod Mounts

Hardware List

<u>Item No.</u>	<u>Part No.</u>	<u>Description</u>
A.		$\frac{7}{16}$ " \times 2 $\frac{1}{2}$ " NC Hex Bolt
B.		$\frac{7}{16}$ " NC Whiz Nut