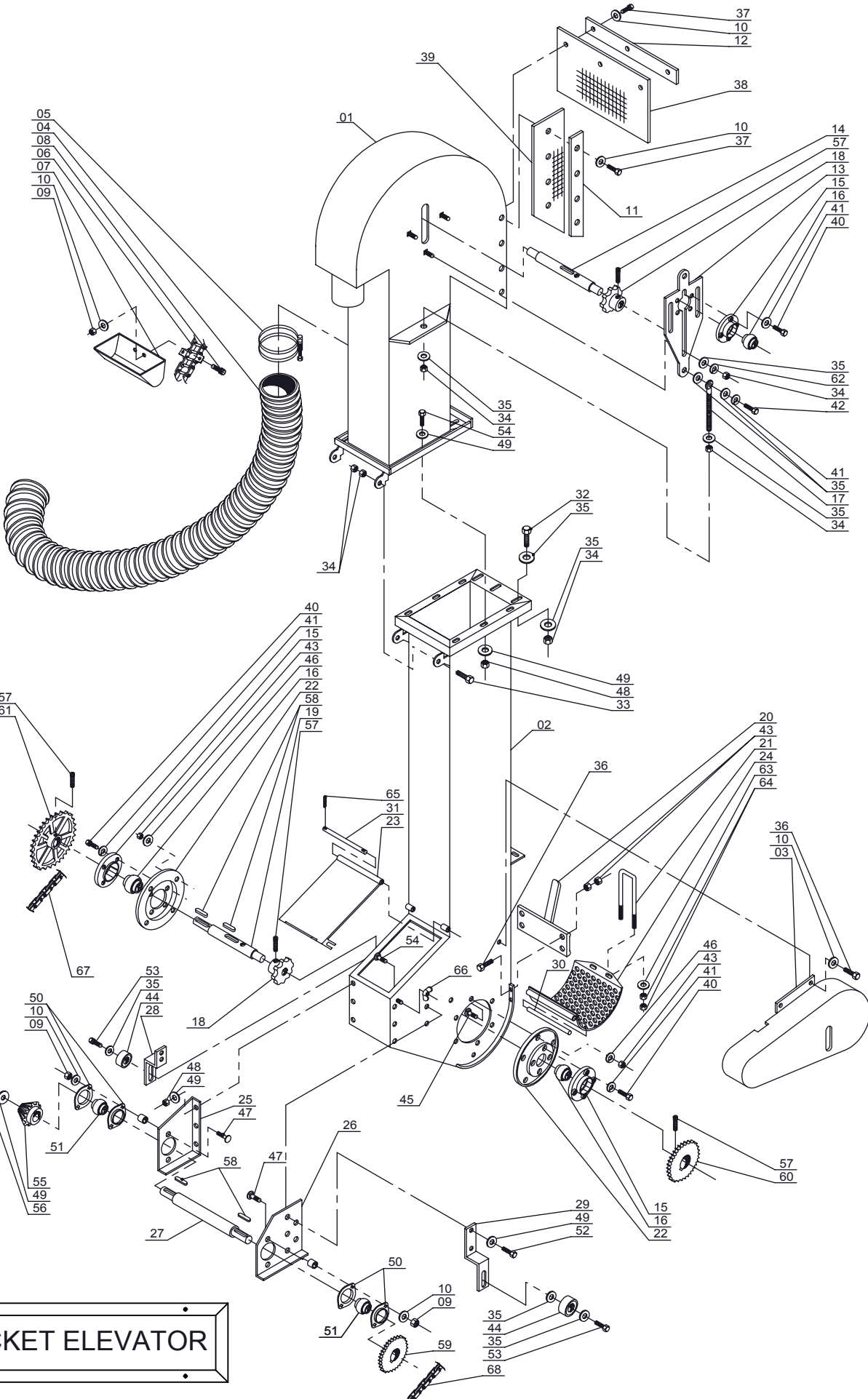


# Double Master Plus Combine

---

Bucket Elevator ..... 2-4

Return to this page by clicking the upper right corner of any page in this section.



BUCKET ELEVATOR

## DMP Bucket Elevator

### Parts List

<u>Item</u>	<u>Part No.</u>	<u>Qty</u>	<u>Description</u>
00.	105.980-6	1	Bucket Elevator Assembly (2010 – present)
00a.	3.401.0019-4	1	Bucket Elevator Assembly (2001 – 2009)
01.	105.973-2	1	Upper Elevator Leg Housing (2010 – present)
01a.	3.403.0104-1	1	Upper Elevator Leg Housing (2001 – 2009)
02.	3.403.0105-8	1	Lower Elevator Leg Housing
03.	024.970-1	1	Guard, Lower RH
04.	3.938.0014-1	1	Vacuum Hose (obsolete)
05.	3.004.0058-8	2	Hose Clamp (obsolete)
06.	105.983-7	1	Elevator Chain 300" (2010 – present)
06a.	3.812.0049-4	1	Elevator Chain 276" (2001 – 2009)
06b.	103123	1	C2080 Connector Link
07.	3.938.0009-3	70	Elevator Bucket
07a.	520201	1	Steel Elevator Bucket
08.	3.901.0027-1	142	Carriage Bolt, M8 x 20mm
09.	3.902.0008-8	142	Nylon Lock Nut, M8
10.	3.934.0004-4	154	Flat Washer, 5/16
11.	3.401.0640-7	2	Rubber Strip Protector, Side
12.	3.404.0641-5	1	Rubber Strip Protector, Front
13.	3.408.0019-7	2	Elevator Leg Chain Tightener Bracket
14.	3.407.0099-7	1	Shaft, Upper Elevator Leg
15.	106054	4	Flange, RFC 35mm
16.	102100	4	Bearing, Insert 35mm
17.	3.903.0006-6	2	Eye Bolt, Chain Tightener 1/2" x 8 1/2"
18.	3.823.0020-6	2	Sprocket, 80 BS 17 x 40mm
19.	3.407.0100-3	1	Shaft, Lower Elevator Leg
20.	002.186-7	1	Clean Out Latch
21.	121017	1	U-Bolt, Bottom Clean Out Cover
22.	3.403.0079-1	2	Lower Elevator Side Access Plate
23.	3.403.0107-4	1	Lower Elevator Leg Access Door
24.	043.638-4	1	Elevator Leg Bottom Clean Out Cover
25.	3.404.0627-8	1	LH Pinion Gear Jack Shaft Plate
26.	3.404.0628-6	1	RH Pinion Gear Jack Shaft Plate
27.	3.407.0109-3	1	Pinion Gear Jack Shaft
28.	3.404.0629-4	1	Chain Tightener Bracket LH
29.	3.404.0630-1	1	Chain Tightener Bracket RH
30.	3.407.0048-9	1	Pin, Elevator Leg Bottom Clean Out Cover
31.	3.407.0107-7	1	Pin, Lower Elevator Leg Access Door
32.	3.901.0040-9	3	Hex Bolt, 1/2" x 1 1/4"
33.	3.901.0039-3	2	Hex Bolt, 1/2" x 1 1/2"
34.	3.902.0011-1	73	Hex Nut 1/2"
35.	3.934.0001-7	25	Flat Washer, 1/2"

## DMP Bucket Elevator

### Parts List

<u>Item</u>	<u>Part No.</u>	<u>Qty</u>	<u>Description</u>
36.	3.901.0069-3	7	Hex Bolt, 5/16" x 1 1/4"
37.	3.901.0073-7	12	Hex Bolt, 5/16" x 3/4"
38.	3.811.0042-6	1	Rubber Belting, 180mm x 305mm
39.	3.811.0043-4	2	Rubber Belting, 100mm x 580mm
40.	3.901.0082-2	16	Hex Bolt, 7/16" x 1 1/2"
41.	3.904.0007-7	16	Lock Washer, 7/16"
42.	3.901.0096-9	2	Hex Bolt, 7/16" x 3/4"
43.	3.902.0015-2	20	Hex Nut, 5/16"
44.	3.938.0007-7	2	Nylon Chain Tensioner
45.	3.901.0025-5	12	Carriage Bolt, 5/16" x 3/4"
46.	3.904.0005-2	12	Lock Washer, 5/16"
47.	3.901.0100-8	4	Carriage Bolt, M8 x 30mm
48.	3.902.0014-4	18	Hex Nut, 3/8"
49.	3.934.0003-3	24	Flat Washer, 3/8"
50.	106013	2	Flangette, 52 MST
51.	102117	2	Bearing, 25mm Insert
52.	3.901.0057-1	4	Hex Bolt, 3/8" x 1"
53.	3.901.0043-3	2	Hex Bolt, 1/2" x 2"
54.	3.901.0066-9	18	Hex Bolt, 3/8" x 3/4"
55.	3.923.0003-7	1	Pinion Gear
56.	3.901.0008-5	1	Socket Head Bolt, 3/8" x 1"
57.	3.901.0012-5	4	Set Screw, 3/8" x 3/4"
58.	3.004.0010-9	5	Keystock, 5/16" x 1 1/4"
59.	119228	1	Sprocket, 50SDS21 (with cross conveyor belt)
59a.	102145	1	Bushing, SDS x 1" (with cross conveyor belt)
59b.	119229	1	Sprocket, 50SDS30 (with cross auger)
59c.	102145	1	Bushing, SDS x 1" (with cross auger)
60.	014.998-2	1	Sprocket, 50 BS 30 x 30mm (with cross conveyor belt)
60a.	119228	1	Sprocket, 50SDS21 (with cross auger)
60b.	102139	1	Bushing, SDS x 30mm (with cross auger)
61.	073.049-1	1	Sprocket, 60 BS 45 x 35mm
62.	3.904.0001-1	10	Lock Washer, 1/2"
63.	3.934.0002-5	2	Flat Washer, 1/4"
64.	3.902.0012-8	4	Hex Nut, 1/4"
65.	3.906.0018-8	4	Cotter Pin, 1/8" x 1 1/2"
66.	3.902.0002-2	1	Wing Nut, 3/8"
67.	103086	48"	Roller Chain, RS 60 (per foot)
68.	103055	57"	Roller Chain, RS 50 (per foot)